

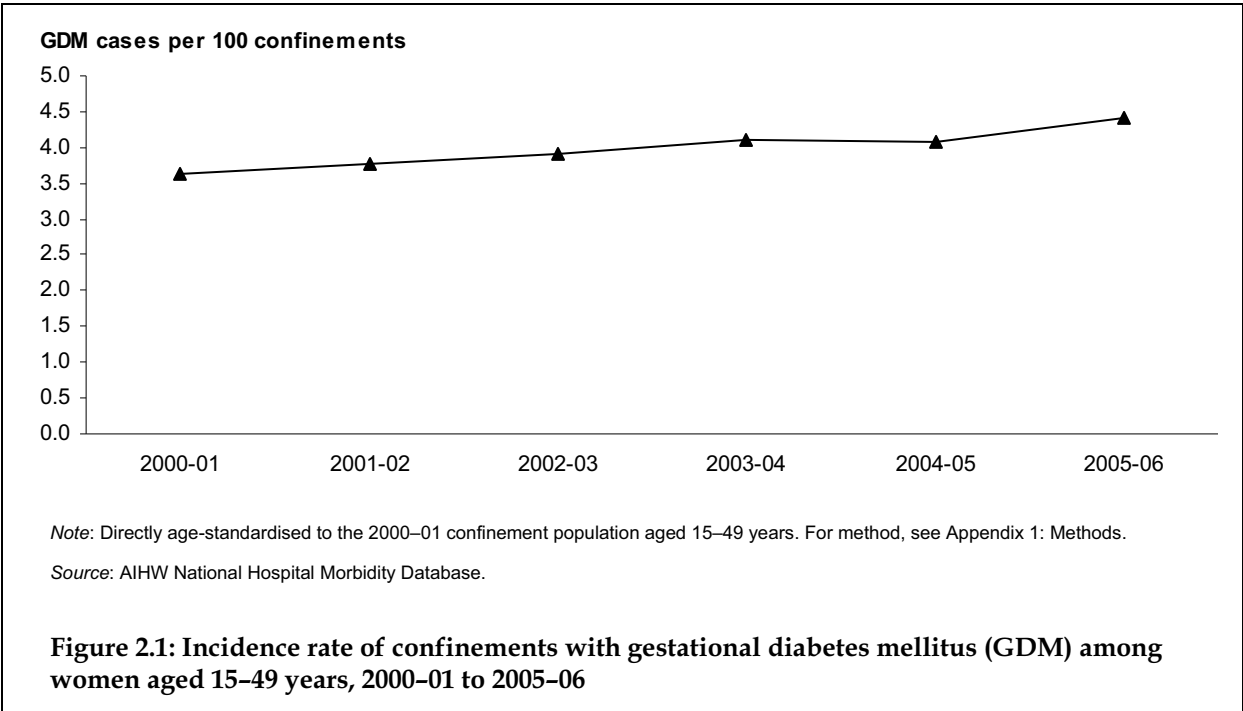
***Errata:* Trends in the incidence of Gestational diabetes mellitus among all Australian women**

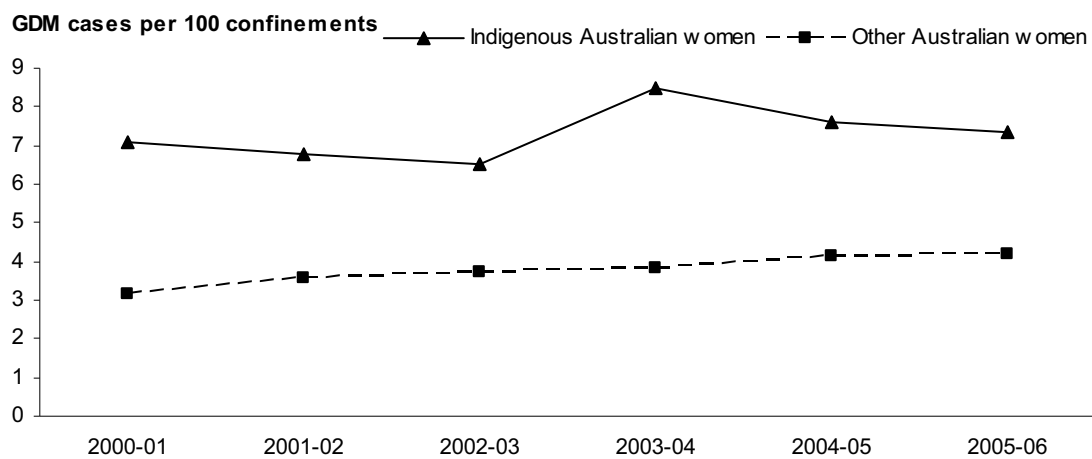
A correction has been made to the text in Section 2.3 – Trend, on page 12, shown in bold below.

2.3 Trend

The age-standardised incidence rate of confinements with GDM among women aged 15–49 years increased by 22% over 6 years: from 3.6 per 100 confinements in 2000–01 to **4.4** per 100 confinements in 2005–06 (Figure 2.1, Table A2.1).

Corrections have also been made to the format of Figure 2.1 (page 13), Figure 3.1 (page 17) and Figure 3.2 (page 18). The data remain unchanged. These figures have been reprinted here to allow for easier reference against the y-axis.



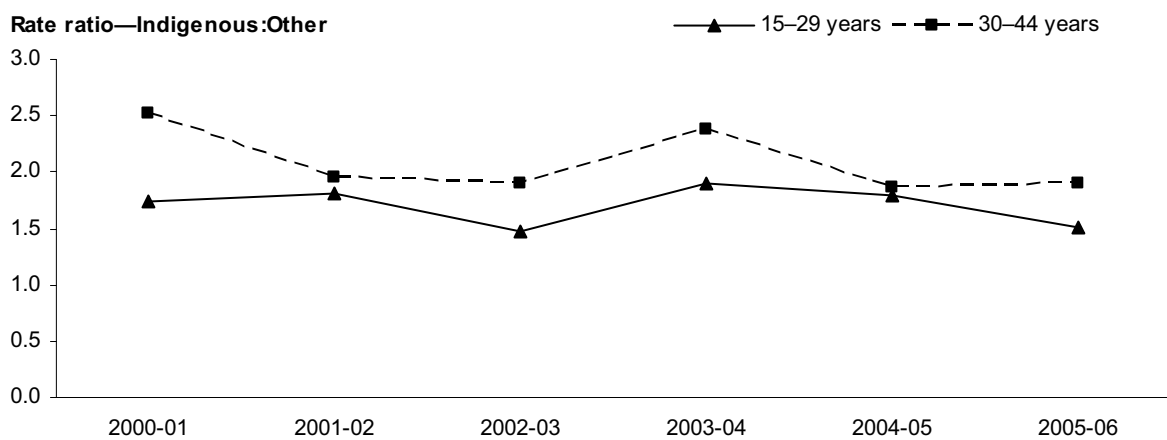
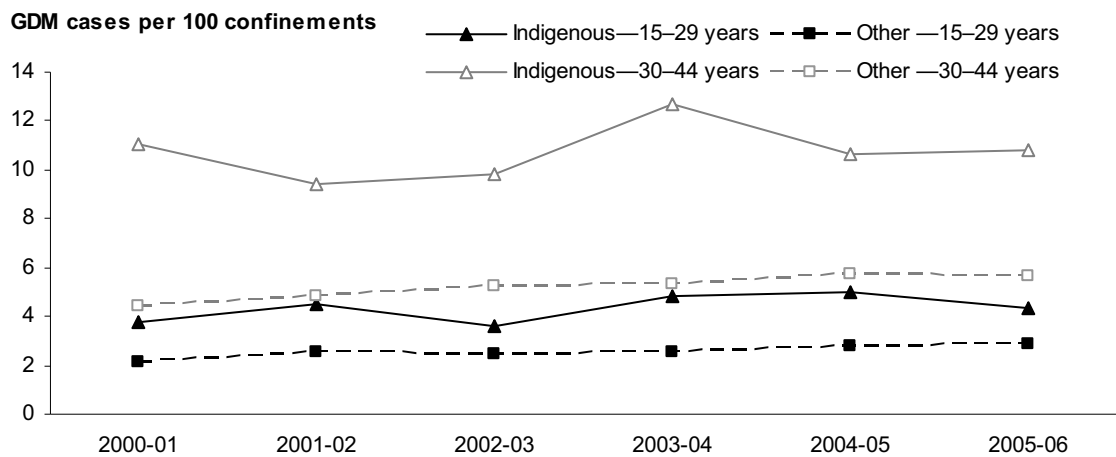


Notes:

1. Data are for hospitalisations in Queensland, Western Australia, South Australia and public hospitals in the Northern Territory only. These data are not necessarily representative of the other jurisdictions, or Australia as a whole.
2. Directly age-standardised to the 2000-01 Other Australian confinement population aged 15-44 years. For method, see Appendix 1: Methods.
3. Indigenous Australian includes Aboriginal, Torres Strait Islander, and both Aboriginal and Torres Strait Islander women.
4. Other Australian women includes both non-Indigenous Australian women and records with a missing/not stated Indigenous status.

Source: AIHW National Hospital Morbidity Database.

Figure 3.1: Standardised incidence rate of confinements with gestational diabetes mellitus (GDM) among women aged 15-44 years, by Indigenous status, 2000-01 to 2005-06



Notes

1. Data are for hospitalisations in Queensland, Western Australia, South Australia and public hospitals in the Northern Territory only. These data are not necessarily representative of the other jurisdictions, or Australia as a whole.
2. Directly age-standardised to the Other Australian confinement population aged 15–29 years or 30–44 years. The rate ratio compares the rate of GDM among Indigenous Australian women in each age group with the rate of GDM among Other Australian women in each age group. For methods, see Appendix 1: Methods.

Source: AIHW National Hospital Morbidity Database.

Figure 3.2: Incidence of confinements with gestational diabetes mellitus (GDM), by Indigenous status and broad age group, 2000-01 to 2005-06