

17 Ageing and trends in service use

This chapter discusses the possible impacts of population ageing on trends in service use. Trends may be affected by the interplay of various factors discussed in this report: population growth, trends in the prevalence and severity of various disabilities, changes in life expectancy for people with various disabilities, trends in patterns of informal care, and changes in service provision. This report has clarified these factors as far as it can. For many of them, information currently available does not provide a solid basis for forward projections, but can be used to provide trend indications.

Therefore, it is not the purpose of this chapter to present projections of future trends in service use. Rather, the available information is used to provide broad indicators of trends in service use, based on a number of underlying assumptions. It is hoped that this may assist in planning broad-level resource allocation.

Section 17.1 discusses the methods, data sources, assumptions and caveats that underpin the estimates. Section 17.2 presents estimated future numbers of people with a severe or profound core activity restriction, which could be used as indicators of the size of the 'potential population' needing services. Section 17.3 discusses trends in service use.

17.1 Methods and underlying assumptions

Number of people with a severe or profound core activity restriction

The number of people with a severe or profound core activity restriction is generally accepted as a broad indicator of potential need for disability support services and is, for instance, used in the denominators for the service performance indicators presented in the CSDA MDS reports (e.g. AHIW 2000b) and the *Report on Government Services 2000* (SCRCSSP 2000).

The ABS survey definition of severe or profound core activity restriction does not directly relate to any particular category or level of impairment. Rather, it is based on the need for frequent or continual personal support in three areas of activity (self-care, mobility and communication). This corresponds quite closely to the CSDA 'target population', that is, people with a disability which results in substantially reduced capacity in at least one of three areas—self-care/management, mobility, communication—requiring ongoing or episodic support (Commonwealth of Australia 1998).

However, the survey questions about restrictions and limitations in activities are primarily focused on physical abilities, and may therefore emphasise the presence of restrictions arising from physical impairment (Madden et al. 1995). Therefore, using the number of people with a severe or profound core activity restriction may mismatch, to some extent, the number of people for whom CSDA-funded services would be appropriate. For instance, some people with an intellectual or psychiatric disability who are current recipients of

CSDA-funded services or who need support might be classified, under the ABS survey definition, as having a 'mild' or 'moderate' core activity restriction.

Three data sources are used to estimate growth in the number of people with a severe or profound core activity restriction:

- ABS 1998 Survey of Disability, Ageing and Carers, which provides the latest national information on the number of people with a severe or profound core activity restriction and their need for and receipt of assistance.
- ABS 1993 Survey of Disability, Ageing and Carers, which is used together with the 1998 survey to provide a range of estimates of the numbers of people with a severe or profound core activity restriction, taking into consideration the reported changes in prevalence rates between 1993 and 1998.
- ABS 1998 population projections data, which provide projected population sizes, and age and sex profiles between 1997 and 2051. The projections take account of possible future changes in fertility, mortality and migration and thus factor in the effects of population ageing resulting from the interaction of these components.

The estimates rely on three underlying assumptions:

- The age- and sex-specific prevalence rates of severe or profound core activity restriction in 1998 (or in 1993) remain constant over the projection period.
- The trend in population growth follows the ABS 1998 population projections.
- Other factors affecting the prevalence of severe or profound core activity restrictions remain unchanged in the future.

The population data used are the ABS 1998 population projections (1997 to 2051) Series K. This projection series assumes that the total fertility rate¹¹ declines to 1.6 births per woman in 2005–06, and then remains constant ('low assumption'). Series K also assumes an annual net overseas migration gain of 90,000 people from 1989–1999 to the end of the projection period ('high assumption') (ABS 1998a: 20). These assumptions closely reflect the recent decline in birth rate in Australia and the current level of net overseas migration (Chapter 2).¹²

It is important to be aware that any departure from these assumptions could result in different estimates. Therefore, the estimates should be interpreted in the context of the assumptions outlined above. Although estimates are presented for a period up to 2031, the discussion in this chapter focuses on the period of 2000–2006.

The 1998 disability survey indicated an increase in the prevalence of severe or profound core activity restrictions, which had been relatively stable between 1981 and 1993. On the basis of information and analyses to date, it appears that the increase in age-standardised prevalence rates of severe or profound core activity restriction between 1993 and 1998 may be mainly a result of improved survey methods which 'captured' a large number of people who were not identified as having a disability in the 1993 survey. In other words, the increase in estimated prevalence in 1998 may not reflect a substantial increase in the underlying prevalence of

¹¹ Total fertility rate is a summary measure based on age-specific fertility rates. The rate for a given year indicates the average number of children that women would have over their lifetimes if they experienced the rates of child-bearing experienced by women at each age in the given year.

¹² The other two assumptions concerning overseas migration for which ABS population projections are available are: an annual net gain of 70,000 people ('low assumption') and zero net migration gain throughout the projection period (ABS 1998a: 20).

disability and need for support (see Section 18.2 for discussion of the changes between 1993 and 1998). Hence, the estimated numbers of people with a severe or profound core activity restriction are based on 1998 prevalence rates and the rates are assumed to remain constant over the projection period. The changes in the prevalence rates between 1993 and 1998 have not been a factor in the assumptions. However, this chapter first presents growth estimates of severe or profound core activity restriction based on 1998 prevalence rates, then presents estimates based on 1993 prevalence rates to illustrate the growth that could have been expected had the 1993 prevalence rates persisted.

The method used to calculate the estimated number of people with a severe or profound core activity restriction is as follows:

Step 1: Data from the 1998 (or 1993) ABS Survey of Disability, Ageing and Carers are used to derive age- and sex-specific rates of severe or profound core activity restriction.

Step 2: These rates are applied to the projected 2000–2031 age and sex distributions of the Australian population (from the ABS Series K projections) to calculate the expected number of people with severe or profound core activity restriction, by age and sex.

Step 3: The resulting numbers for each age and sex group are summed to give an estimate of the total projected number of people with a severe or profound core activity restriction in the Australian population.

17.2 Growth estimates of severe or profound core activity restriction

This section presents the estimated future number of people with a severe or profound core activity restriction—the ‘potential population’ needing services. Growth estimates of severe or profound core activity restriction using 1998 and 1993 prevalence rates are presented, and differences between these two sets of estimates are discussed.

Growth estimates based on 1998 prevalence rates

Population trends, in particular population ageing, are expected to have a great impact on the number of people with a severe or profound core activity restriction. The growth estimates based on the 1998 age- and sex-specific prevalence rates indicate that, between 2000 and 2006, the total number of people with a severe or profound core activity restriction can be expected to increase by 11.6% (137,600 people) (Tables 17.1 and 17.2). This overall growth is mainly attributable to the rapid increase in size of the age groups 45–64 (19.3%, or 59,500 people) and 65 and over (15.0% or 76,300 people). Thus, the ageing of the working-age population and the aged population is expected to contribute strongly to the growth in number of people with a severe or profound core activity restriction.

Among people aged under 65, the total estimated increase in the number of people with a severe or profound core activity restriction between 2000 and 2006 is 9.0%, or 61,300 people. However, the rate of increase varies with age. Growth in the working age population (age 15–64) is estimated at 12.0%, or 64,300 people. The expected growth rate in the age group 45–64 is 19.3%, or 59,500 people—this is the highest growth rate of any age group. In contrast, the projected decline in the population aged under 15 will result in a 2.0% decrease in the number of people with a severe or profound core activity restriction in that age group (Tables 17.1 and 17.2).

Table 17.1: Percentage change in the estimated number of people with a severe or profound core activity restriction, by age and sex, Australia, 2000–2006 (based on 1998 prevalence rates)^{(a)(b)}

Age/sex	2000–2001	2001–2002	2002–2003	2003–2004	2004–2005	2005–2006	2000–2006
Males							
0–14	–0.1	–0.1	–0.2	–0.3	–0.6	–0.7	–2.0
15–19	0.8	0.2	0.0	0.3	0.9	0.7	3.0
20–29	–0.7	–0.4	0.1	0.4	0.5	0.8	0.7
30–44	1.2	1.0	0.6	0.3	0.0	–0.4	2.8
45–64	3.1	3.2	3.1	2.9	2.8	2.7	19.1
65+	2.8	2.7	2.5	2.4	2.9	3.2	17.7
Total 0–64	1.5	1.5	1.4	1.3	1.1	1.1	8.1
Total 15–64	2.1	2.1	2.0	1.8	1.7	1.7	11.9
<i>Total</i>	<i>1.9</i>	<i>1.9</i>	<i>1.8</i>	<i>1.6</i>	<i>1.7</i>	<i>1.8</i>	11.2
Females							
0–14	–0.1	–0.1	–0.2	–0.4	–0.7	–0.7	–2.2
15–19	0.7	0.4	0.1	0.2	0.7	0.8	3.0
20–29	–1.1	–0.9	–0.2	0.2	0.3	0.7	–0.9
30–44	1.0	0.8	0.4	0.3	0.1	0.0	2.6
45–64	3.1	3.1	3.0	3.0	3.0	2.9	19.4
65+	2.4	2.1	2.0	1.8	2.2	2.4	13.7
Total 0–64	1.7	1.7	1.6	1.6	1.5	1.5	10.0
Total 15–64	2.0	2.0	1.9	1.9	1.9	1.9	12.0
<i>Total</i>	<i>2.1</i>	<i>1.9</i>	<i>1.8</i>	<i>1.7</i>	<i>1.9</i>	<i>2.0</i>	11.9
Persons							
0–14	–0.1	–0.1	–0.2	–0.4	–0.6	–0.7	–2.0
15–19	0.8	0.3	0.1	0.3	0.8	0.8	3.0
20–29	–0.9	–0.6	0.0	0.3	0.4	0.8	–0.1
30–44	1.1	0.9	0.5	0.3	0.0	–0.2	2.7
45–64	3.1	3.2	3.1	2.9	2.9	2.8	19.3
65+	2.6	2.3	2.2	2.0	2.4	2.7	15.0
Total 0–64	1.6	1.6	1.5	1.4	1.3	1.3	9.0
Total 15–64	2.0	2.0	1.9	1.9	1.8	1.8	12.0
Total	2.0	1.9	1.8	1.7	1.8	1.9	11.6

(a) ABS 1998 population projections (Series K) as at 30 June.

(b) Estimated numbers were calculated using age- and sex-specific prevalence rates derived from the ABS 1998 Survey of Disability, Ageing and Carers.

Source: AIHW analysis of ABS 1998 Survey of Disability, Ageing and Carers data; ABS 1998a.

Table 17.2: Estimated number of people with a severe or profound core activity restriction, by age and sex ('000), Australia, 2000–2031 (based on 1998 prevalence rates)^{(a)(b)}

Age/sex	2000	2001	2002	2003	2004	2005	2006	2011	2021	2031
Males										
0–14	98.2	98.1	98.0	97.9	97.5	96.9	96.2	92.8	91.2	92.9
15–19	17.9	18.1	18.1	18.1	18.2	18.3	18.5	18.8	17.4	17.4
20–29	26.0	25.8	25.7	25.8	25.9	26.0	26.2	27.2	27.6	25.9
30–44	66.4	67.2	67.9	68.3	68.5	68.5	68.2	68.5	71.0	73.4
45–64	147.3	151.8	156.7	161.6	166.2	170.8	175.4	192.6	208.6	214.8
65+	172.1	177.0	181.8	186.3	190.8	196.3	202.5	233.9	315.6	424.6
Total 0–64	355.7	361.0	366.5	371.6	376.2	380.5	384.5	399.9	415.8	424.4
Total 15–64	257.6	262.9	268.4	273.7	278.7	283.6	288.3	307.2	324.6	331.5
<i>Total</i>	<i>527.8</i>	<i>538.0</i>	<i>548.2</i>	<i>557.9</i>	<i>567.0</i>	<i>576.8</i>	<i>587.1</i>	<i>633.8</i>	<i>731.4</i>	<i>849.0</i>
Females										
0–14	47.2	47.1	47.1	47.0	46.8	46.5	46.1	44.4	43.6	44.5
15–19	13.9	14.0	14.0	14.0	14.1	14.2	14.3	14.5	13.4	13.4
20–29	25.5	25.2	25.0	24.9	25.0	25.1	25.3	26.3	26.6	25.0
30–44	78.1	78.9	79.5	79.8	80.1	80.1	80.1	80.3	81.8	84.6
45–64	161.2	166.1	171.3	176.4	181.7	187.1	192.5	214.0	233.2	238.0
65+	335.8	343.9	351.2	358.3	364.7	372.7	381.7	425.3	540.8	729.3
Total 0–64	325.8	331.3	336.9	342.3	347.6	353.0	358.3	379.6	398.7	405.5
Total 15–64	278.7	284.2	289.8	295.3	300.8	306.5	312.2	335.1	355.1	361.0
<i>Total</i>	<i>661.7</i>	<i>675.3</i>	<i>688.1</i>	<i>700.5</i>	<i>712.3</i>	<i>725.7</i>	<i>740.1</i>	<i>804.8</i>	<i>939.5</i>	<i>1,134.8</i>
Persons										
0–14	145.3	145.2	145.1	144.8	144.3	143.4	142.4	137.2	134.8	137.4
15–19	31.8	32.0	32.1	32.1	32.2	32.5	32.7	33.3	30.8	30.7
20–29	51.5	51.1	50.7	50.7	50.9	51.1	51.5	53.5	54.2	50.9
30–44	144.5	146.0	147.3	148.1	148.6	148.7	148.3	148.9	152.8	158.0
45–64	308.4	318.0	328.0	338.0	347.8	357.8	368.0	406.6	441.8	452.8
65+	507.9	520.9	533.0	544.6	555.5	569.0	584.3	659.2	856.4	1,153.9
Total 0–64	681.6	692.3	703.3	713.8	723.8	733.5	742.9	779.5	814.5	829.9
Total 15–64	536.2	547.1	558.2	569.0	579.5	590.1	600.5	642.3	679.7	692.5
Total	1,189.5	1,213.2	1,236.3	1,258.4	1,279.4	1,302.5	1,327.1	1,438.7	1,670.9	1,983.8

(a) ABS 1998 population projections (Series K) as at 30 June.

(b) Estimated numbers were calculated using age- and sex-specific prevalence rates derived from the ABS 1998 Survey of Disability, Ageing and Carers.

Source: AIHW analysis of ABS 1998 Survey of Disability, Ageing and Carers data; ABS 1998a.

Growth estimates based on 1993 prevalence rates

Growth estimates based on the 1993 age- and sex-specific prevalence rates show a similar pattern to the estimates based on 1998 rates, but the estimated numbers of people are lower. Estimates based on 1993 rates suggest that, between 2000 and 2006, the total number of people with a severe or profound core activity restriction will increase by 12.6% (106,800 people). The overall growth is largely due to the rapid increase in the age groups 45–64 (19.4%, or 35,600 people) and 65 and over (15.7%, or 68,900 people). This pattern again reflects a strong impact of population ageing on the number of people with a severe or profound core activity restriction (Tables 17.3 and 17.4).

Between 2000 and 2006, the total estimated growth in the number of people aged under 65 with a severe or profound core activity restriction is 9.2%, or 38,000 people. The increase in the working age population (aged 15–64) is estimated at 11.2%, or 38,900 people. There is an expected decrease of 1.5% in the number of people with a severe or profound core activity restriction aged under 15 (Tables 17.3 and 17.4).

Differences between the estimates based on 1993 and 1998 prevalence rates

Table 17.5 compares the estimated number of people with a severe or profound core activity restriction based on 1993 and 1998 age- and sex-specific prevalence rates. In the 1993 survey, severity of core activity restriction was not determined for children aged under 5 with a disability. For comparative purposes, Table 17.5 provides two sets of estimates using 1998 rates: one for people aged 5 or over and one for people of all ages.

The growth estimates based on 1993 and 1998 prevalence rates can be thought of as representing low and high ends (respectively) of a range for the future number of people with a severe or profound core activity restriction. For people aged 5 or over, the low end of the range in 2000 is 850,900 (1993 rates) and the high end is 1,162,300 (1998 rates) (Table 17.5)—a difference of 311,400 people. In 2006, for people aged 5 or over, the difference between the low end (using 1993 rates) and the high end (using 1998 rates) is 343,700 people.

The differences between the estimates based on 1993 and 1998 rates are due to differences in age- and sex-specific prevalence rates between 1993 and 1998 (Figure 17.1). In comparison with the 1993 survey, the reported prevalence of severe or profound core activity restriction in 1998 survey was higher in several age groups, particularly the age groups 45–64 and 70–79 for males and females, and the age group 5–14 for males (see discussions in Chapters 12 and 13). The inclusion of children aged under 5 with a severe or profound core activity restriction in 1998 also contributed to the overall higher prevalence rate.

Table 17.3: Percentage change in the estimated number of people with a severe or profound core activity restriction, by age and sex, Australia, 2000–2006 (based on 1993 prevalence rates)^{(a)(b)}

Age/sex	2000–2001	2001–2002	2002–2003	2003–2004	2004–2005	2005–2006	2000–2006
Males							
5–14 ^(c)	0.1	0.1	0.0	–0.2	–0.6	–0.6	–1.2
15–19	0.8	0.2	0.0	0.3	0.9	0.7	3.0
20–29	–0.7	–0.4	0.1	0.4	0.4	0.8	0.6
30–44	0.9	0.7	0.4	0.3	0.1	–0.1	2.3
45–64	3.1	3.3	3.1	2.8	2.8	2.7	19.3
65+	3.1	3.0	2.7	2.6	3.1	3.4	19.3
Total 5–64 ^(c)	1.5	1.6	1.5	1.3	1.2	1.2	8.7
Total 15–64	1.8	1.9	1.8	1.7	1.6	1.6	11.0
<i>Total</i>	2.2	2.2	2.0	1.9	2.0	2.1	13.0
Females							
5–14 ^(c)	0.0	0.0	–0.2	–0.4	–0.6	–0.7	–1.9
15–19	0.7	0.4	0.1	0.2	0.7	0.8	3.0
20–29	–0.9	–0.7	–0.1	0.3	0.4	0.7	–0.2
30–44	1.4	1.1	0.7	0.4	–0.1	–0.5	3.0
45–64	3.0	3.3	3.1	2.9	2.9	2.9	19.5
65+	2.5	2.2	2.1	1.9	2.2	2.4	14.0
Total 5–64 ^(c)	1.7	1.8	1.6	1.5	1.4	1.3	9.7
Total 15–64	1.9	2.0	1.9	1.7	1.7	1.6	11.3
<i>Total</i>	2.1	2.0	1.9	1.7	1.9	2.0	12.2
Persons							
5–14 ^(c)	0.1	0.1	–0.1	–0.3	–0.6	–0.7	–1.5
15–19	0.8	0.3	0.1	0.3	0.8	0.8	3.0
20–29	–0.8	–0.6	0.0	0.3	0.4	0.8	0.2
30–44	1.1	0.9	0.6	0.3	0.0	–0.3	2.7
45–64	3.1	3.3	3.1	2.9	2.9	2.8	19.4
65+	2.7	2.5	2.3	2.2	2.5	2.7	15.7
Total 5–64 ^(c)	1.6	1.7	1.6	1.4	1.3	1.3	9.2
Total 15–64	1.9	2.0	1.9	1.7	1.7	1.6	11.2
Total	2.2	2.1	1.9	1.8	1.9	2.0	12.6

(a) ABS 1998 population projections (Series K) as at 30 June.

(b) Estimated numbers were calculated using age- and sex-specific prevalence rates derived from the ABS 1993 Survey of Disability, Ageing and Carers.

(c) In the 1993 survey, severity of core activity restriction was not determined for children aged 0–4 years with a disability.

Source: AIHW analysis of ABS 1993 Survey of Disability, Ageing and Carers data; ABS 1998a.

Table 17.4: Estimated number of people with a severe or profound core activity restriction, by age and sex ('000), Australia, 2000–2031 (based on 1993 prevalence rates)^{(a)(b)}

Age/sex	2000	2001	2002	2003	2004	2005	2006	2011	2021	2031
Males										
5–14 ^(c)	38.9	38.9	39.0	38.9	38.9	38.6	38.4	36.9	35.8	36.7
15–19	8.4	8.5	8.5	8.5	8.6	8.6	8.7	8.9	8.2	8.2
20–29	20.6	20.5	20.4	20.4	20.5	20.6	20.7	21.5	21.9	20.5
30–44	49.6	50.0	50.4	50.6	50.7	50.8	50.7	51.1	52.8	54.8
45–64	85.9	88.6	91.6	94.5	97.1	99.8	102.5	112.2	121.5	125.2
65+	141.1	145.4	149.8	153.8	157.9	162.7	168.2	195.5	260.7	355.5
Total 5–64 ^(c)	203.4	206.5	209.8	212.9	215.8	218.4	221.1	230.6	240.2	245.4
Total 15–64	164.6	167.6	170.8	174.0	176.9	179.8	182.7	193.8	204.4	208.7
<i>Total</i>	<i>344.5</i>	<i>351.9</i>	<i>359.6</i>	<i>366.7</i>	<i>373.7</i>	<i>381.2</i>	<i>389.3</i>	<i>426.2</i>	<i>500.9</i>	<i>601.0</i>
Females										
5–14 ^(c)	26.4	26.4	26.4	26.3	26.2	26.1	25.9	24.8	24.2	24.8
15–19	9.0	9.1	9.1	9.1	9.1	9.2	9.3	9.4	8.7	8.7
20–29	23.8	23.6	23.4	23.4	23.5	23.6	23.8	24.7	24.9	23.4
30–44	53.3	54.0	54.6	55.0	55.2	55.2	54.9	55.0	55.9	57.9
45–64	97.1	100.0	103.3	106.5	109.6	112.8	116.1	127.8	138.8	141.8
65+	296.8	304.2	310.9	317.5	323.6	330.6	338.5	377.6	479.6	647.1
Total 5–64 ^(c)	209.6	213.1	216.8	220.4	223.6	226.8	229.9	241.7	252.6	256.6
Total 15–64	183.2	186.7	190.5	194.0	197.4	200.7	204.0	216.9	228.4	231.8
<i>Total</i>	<i>506.4</i>	<i>517.3</i>	<i>527.8</i>	<i>537.8</i>	<i>547.2</i>	<i>557.4</i>	<i>568.4</i>	<i>619.3</i>	<i>732.2</i>	<i>903.7</i>
Persons										
5–14 ^(c)	65.2	65.3	65.3	65.3	65.1	64.7	64.3	61.7	60.0	61.6
15–19	17.4	17.6	17.6	17.6	17.7	17.8	18.0	18.3	16.9	16.8
20–29	44.4	44.1	43.8	43.8	44.0	44.2	44.5	46.2	46.8	43.9
30–44	102.9	104.0	105.0	105.6	106.0	106.0	105.6	106.1	108.8	112.7
45–64	183.0	188.6	194.9	201.0	206.7	212.6	218.6	240.0	260.3	266.9
65+	437.9	449.6	460.7	471.3	481.5	493.3	506.8	573.1	740.3	1,002.7
Total 5–64 ^(c)	413.0	419.6	426.7	433.3	439.4	445.3	451.0	472.3	492.8	502.0
Total 15–64	347.8	354.3	361.3	368.0	374.3	380.6	386.7	410.6	432.8	440.5
Total	850.9	869.2	887.3	904.6	920.9	938.6	957.7	1,045.5	1,233.1	1,504.7

(a) ABS 1998 population projections (Series K) as at 30 June.

(b) Estimated numbers were calculated using age- and sex-specific prevalence rates derived from the ABS 1993 Survey of Disability, Ageing and Carers.

(c) In the 1993 survey, severity of core activity restriction was not determined for children aged 0–4 years with a disability.

Source: AIHW analysis of ABS 1993 Survey of Disability, Ageing and Carers data; ABS 1998a.

Table 17.5: Comparison of estimated number of people with a severe or profound core activity restriction: estimates based on 1993 and 1998 prevalence rates, by age and sex, Australia, 2000–2006^{(a)(b)}

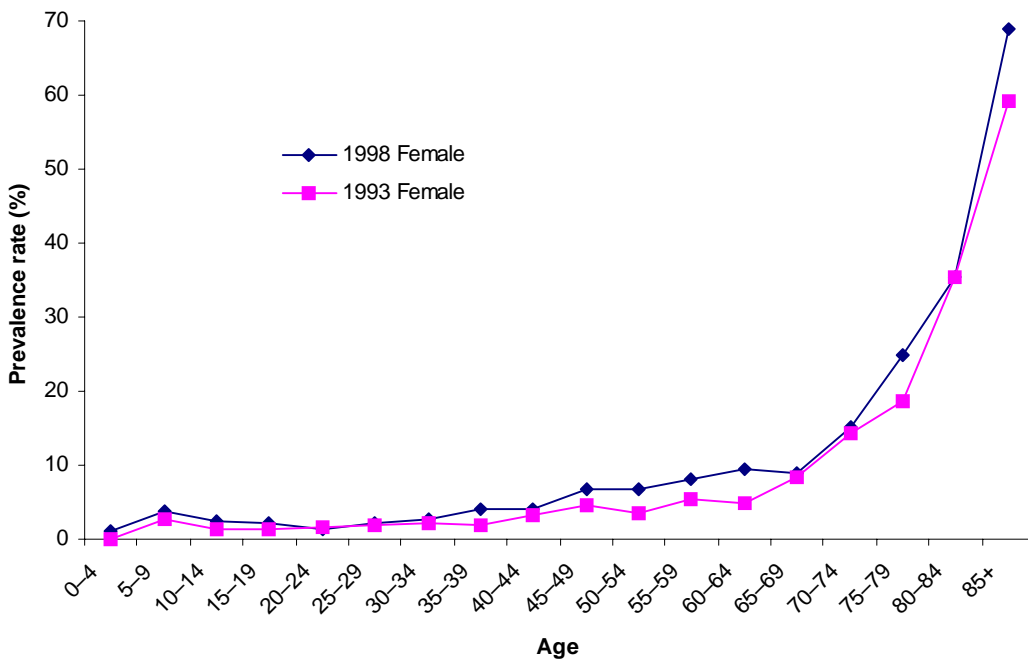
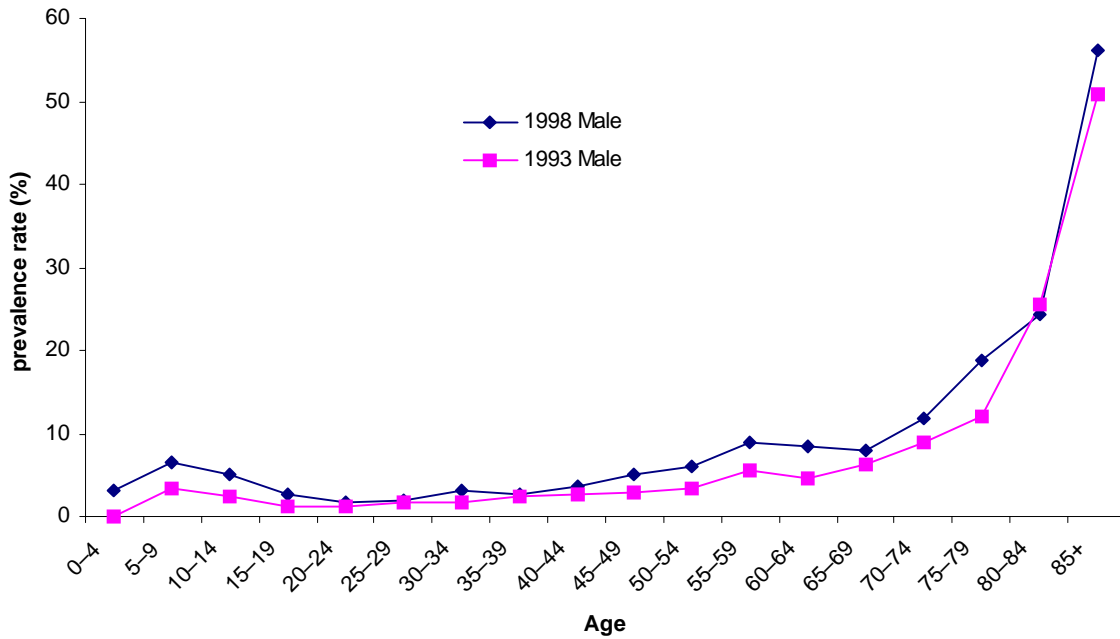
Age/sex	Number ('000)						Percentage change		
	2000			2006			2001–2006		
	1993 rates	1998 rates	1998 rates	1993 rates	1998 rates	1998 rates	1993 rates	1998 rates	1998 rates
	Aged 5+	Aged 5+	All ages	Aged 5+	Aged 5+	All ages	Aged 5+	Aged 5+	All ages
Males									
0–14 ^(c)	38.9	78.1	98.2	38.4	77.3	96.2	–1.2	–1.1	–2.0
15–19	8.4	17.9	17.9	8.7	18.5	18.5	3.0	3.0	3.0
20–29	20.6	26.0	26.0	20.7	26.2	26.2	0.6	0.7	0.7
30–44	49.6	66.4	66.4	50.7	68.2	68.2	2.3	2.8	2.8
45–64	85.9	147.3	147.3	102.5	175.4	175.4	19.3	19.1	19.1
65+	141.1	172.1	172.1	168.2	202.5	202.5	19.3	17.7	17.7
Total 0–64 ^(c)	203.4	335.7	355.7	221.1	365.6	384.5	8.7	8.9	8.1
Total 15–64	164.6	257.6	257.6	182.7	288.3	288.3	11.0	11.9	11.9
<i>Total</i>	<i>344.5</i>	<i>507.8</i>	<i>527.8</i>	<i>389.3</i>	<i>568.1</i>	<i>587.1</i>	<i>13.0</i>	<i>11.9</i>	<i>11.2</i>
Females									
0–14 ^(c)	26.4	40.0	47.2	25.9	39.4	46.1	–1.9	–1.6	–2.2
15–19	9.0	13.9	13.9	9.3	14.3	14.3	3.0	3.0	3.0
20–29	23.8	25.5	25.5	23.8	25.3	25.3	–0.2	–0.9	–0.9
30–44	53.3	78.1	78.1	54.9	80.1	80.1	3.0	2.6	2.6
45–64	97.1	161.2	161.2	116.1	192.5	192.5	19.5	19.4	19.4
65+	296.8	335.8	335.8	338.5	381.7	381.7	14.0	13.7	13.7
Total 0–64 ^(c)	209.6	318.7	325.8	229.9	351.6	358.3	9.7	10.3	10.0
Total 15–64	183.2	278.7	278.7	204.0	312.2	312.2	11.3	12.0	12.0
<i>Total</i>	<i>506.4</i>	<i>654.5</i>	<i>661.7</i>	<i>568.4</i>	<i>733.3</i>	<i>740.1</i>	<i>12.2</i>	<i>12.0</i>	<i>11.9</i>
Persons									
0–14 ^(c)	65.2	118.2	145.3	64.3	116.7	142.4	–1.5	–1.3	–2.0
15–19	17.4	31.8	31.8	18.0	32.7	32.7	3.0	3.0	3.0
20–29	44.4	51.5	51.5	44.5	51.5	51.5	0.2	–0.1	–0.1
30–44	102.9	144.5	144.5	105.6	148.3	148.3	2.7	2.7	2.7
45–64	183.0	308.4	308.4	218.6	368.0	368.0	19.4	19.3	19.3
65+	437.9	507.9	507.9	506.8	584.3	584.3	15.7	15.0	15.0
Total 0–64 ^(c)	413.0	654.4	681.6	451.0	717.1	742.9	9.2	9.6	9.0
Total 15–64	347.8	536.2	536.2	386.7	600.5	600.5	11.2	12.0	12.0
Total	850.9	1,162.3	1,189.5	957.7	1,301.4	1,327.1	12.6	12.0	11.6

(a) ABS 1998 population projections (Series K) as at 30 June.

(b) Estimated numbers were calculated using age- and sex-specific prevalence rates derived from the ABS 1993 and 1998 Survey of Disability, Ageing and Carers, respectively, to show a range of estimates.

(c) In the 1993 survey, severity of core activity restriction was not determined for children aged 0–4 years with a disability.

Source: AIHW analysis of 1993 and 1998 ABS Survey of Disability, Ageing and Carers data; ABS 1998a.



Note: In the 1993 survey, severity of core activity restriction was not determined for children aged under 5 with a disability.

Source: AIHW analysis of ABS Survey of Disability, Ageing and Carers 1993 and 1998 data.

Figure 17.1: Age- and sex-specific prevalence rates of severe or profound core activity restriction, Australia, 1993 and 1998

17.3 Trends in service use

This section discusses trends in CSDA-funded service use. The previous section has shown that the projected population trends, in particular population ageing, are expected to have a substantial impact on the growth in the number of people with a severe or profound core activity restriction—the ‘potential population’ needing services. The estimated future growth in the number of people with a severe or profound core activity restriction is affected by two aspects of population ageing in Australia: the ageing of the aged population and the rapid ageing of the working-age population. However, growth of the target population may not necessarily result in an equivalent increase in the number of consumers of CSDA-funded services. Future trends in service use will be affected by the interplay of various factors, including service provision policies and the level of available resources.

Figure 17.2 and Table 17.6 show a comparison of the age composition of consumers of CSDA-funded services and the estimated population with a severe or profound core activity restriction in 1999. Almost 73% of people with a severe or profound core activity restriction were aged 40 or over, in comparison with only 34% of consumers of CSDA-funded services. The highest proportions of consumers of CSDA-funded services were in the age groups of 20–29 (22.6%) and 30–39 (23.0%), while only 12% of people with a severe or profound core activity restriction were in these age groups. About 12% of consumers of CSDA-funded services were aged 50–64, in comparison with 19% of people with a severe or profound core activity restriction.

Table 17.6: Age distribution of people with a severe or profound core activity restriction and consumers of CSDA-funded services, Australia, 1999

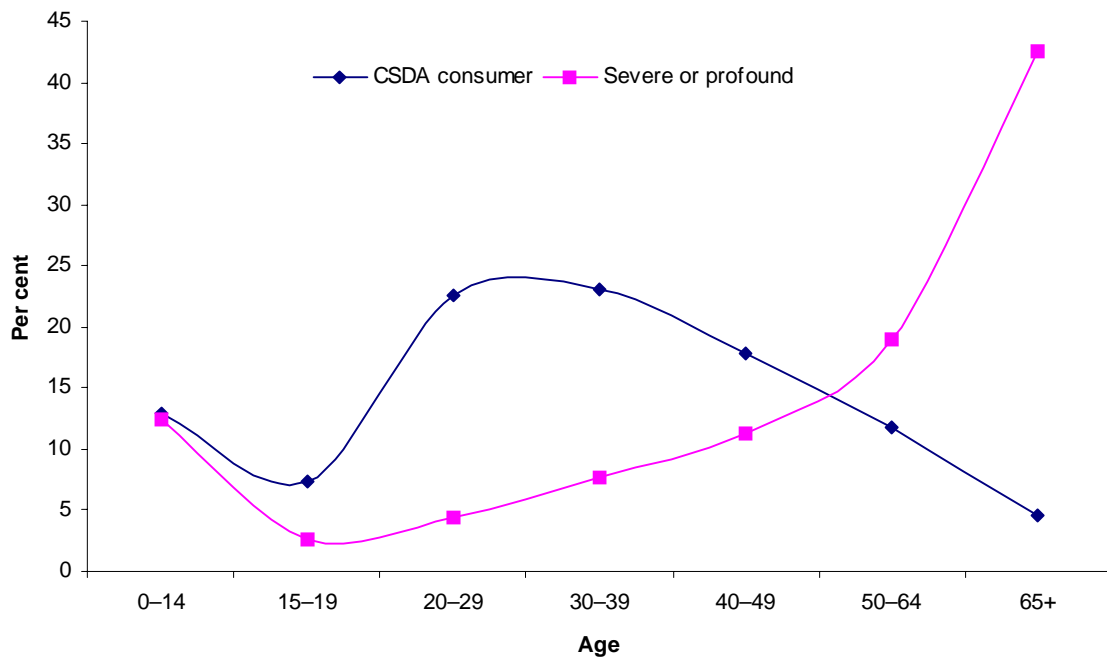
	Severe or profound ^(a)			CSDA consumers ^(b)		
	Number	% of 0–64	% of total	Number	% of 0–64	% of total
0–14	145,200	13.6	12.4	8,157	21.7	13.0
15–19	31,500	7.7	2.7	4,626	4.7	7.4
20–29	51,600	23.6	4.4	14,155	7.7	22.6
30–39	89,200	24.1	7.6	14,451	13.3	23.0
40–49	132,200	18.6	11.3	11,145	19.7	17.8
50–64	220,900	12.3	18.9	7,368	32.9	11.7
65+	495,700	—	42.5	2,850	—	4.5
0–64	670,500	100.0	57.5	59,902	100.0	95.5
15–64	525,300		45.0	51,744		82.5
All ages	1,166,200		100.0	62,752		100.0

(a) Estimated numbers of people with a severe or profound core activity restriction in 1999.

(b) Based on the number of people who received services on the ‘snapshot’ day in 1999 from providers who received at least some CSDA funding. The numbers are estimates, made using a linkage key (AIHW Disability Data Briefing Number 17, March 2000).

— Nil or rounded to zero.

Source: AIHW analysis of ABS 1998 Survey of Disability, Ageing and Carers data; AIHW analysis of 1999 CSDA MDS collection; ABS 1998a.



Source: Table 17.6.

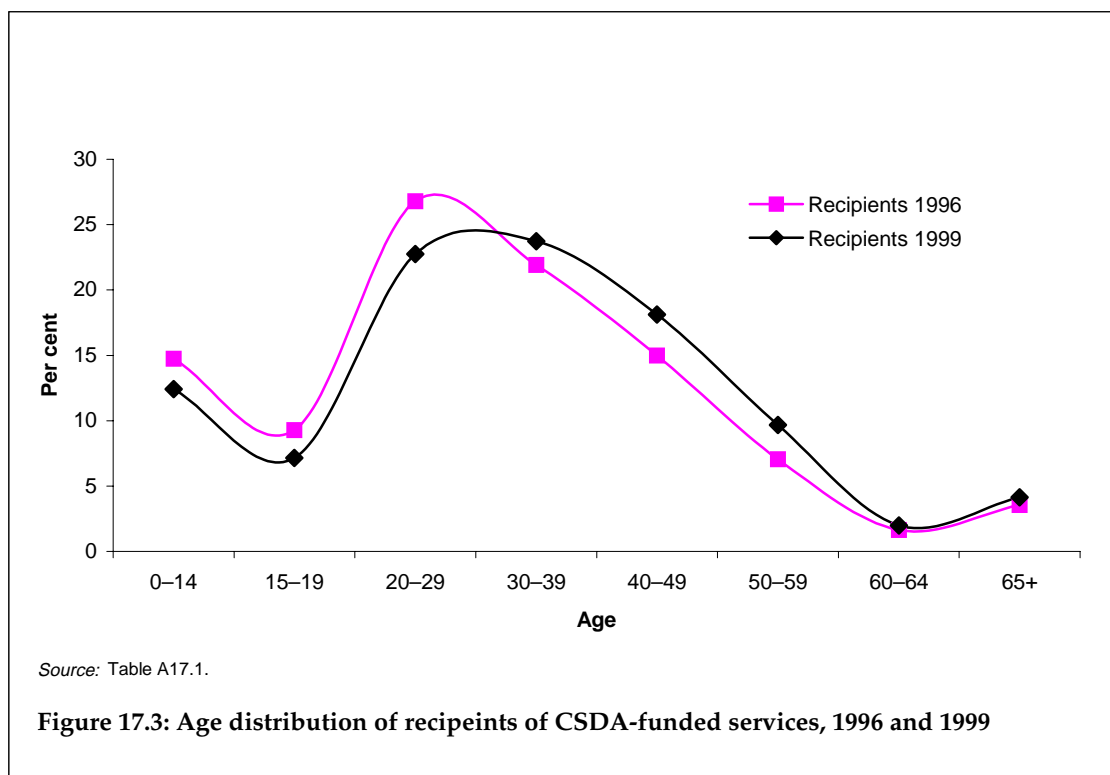
Figure 17.2: Age distribution of consumers of CSDA-funded services and the population with a severe or profound core activity restriction, 1999

This comparison raises some important questions: Is the current service use pattern, with a peak of consumers aged 20–39, likely to continue in future years? Does the current age distribution of consumers reflect an increase in service use that started 30–40 years ago, combined with a population bulge and longer life expectancies for people with a disability?

Figure 17.3 shows the distribution of CSDA services classified by age of recipients in 1996 and 1999.¹³ The figure suggests the age distribution of service recipients has changed over time. In particular, in 1996 there was a sharp peak in the 20–29 year age group, while by 1999 the peak was not so sharp and had moved towards the 30–39 year age group. Throughout the age spectrum the 1999 curve appears to be a few years ahead of the 1996 curve, suggesting that the apparent bulge may be moving through and that, in future years, the age distribution may change in shape, perhaps flattening out. Clearly, it will be important to continue to monitor the age distribution of service recipients over coming years.

If the age distribution of CSDA service users continues this pattern of change, the service usage rate for the age group 45–64 could increase. Between 2000 and 2006, the number of

¹³ ‘Recipients’ is a count of the number of services received on the ‘snapshot’ day; it is not a count of individuals, as a person who received services from more than one provider would be counted more than once. In comparing 1996 and 1999 data it is necessary to use ‘recipients’ rather than consumers, as counts of consumers only became possible in 1999 with the use of the linkage key.



people with a severe or profound core activity restriction is estimated to increase by 11.6% and the highest increase (19.3%) is in the population aged 45–64 (Table 17.1). Could the service use pattern approach the population prevalence pattern, or is there a pattern of ‘retirement’ from CSDA services?

Between 1996 and 1999, the overall growth rate of recipients of CSDA-funded services was 8.4%, or 2.7% per year (Table 17.7). The general shape of the age-specific growth rates of service recipients followed a similar but ‘accelerated’ pattern to that of the population with severe or profound core activity restrictions, in particular from the age group of 35+ (Figure 17.4 and Table 17.7). The high growth rates in service recipients in the upper-end of the working-ages not only partly reflect the effect of the baby-boom generation, but may also relate to a high level of service retention among service users who began receiving services in the 1960s or later decades. The decline in service recipients aged under 25 is consistent with the possibility that service provision for an increasing number of older people could be creating an access trough for younger people, behind this wave.

Table 17.8 and Figure 17.5 illustrate changes in Commonwealth, State and Territory Government recurrent outlays on disability services and aged care services between 1992–93 and 1997–98.¹⁴ During this period, the average annual growth rate in expenditure on welfare services for people with a disability was 4.7%, in contrast to 14.4% for aged care services.

¹⁴ Excluding government pensions and benefits.

Table 17.7 Age-specific growth rates (%) of the population with a severe or profound core activity restriction and recipients of CSDA-funded services, Australia, 1996–1999

Age	Severe or profound ^(a)		Recipients ^(b)	
	Total growth	Annual growth	Total growth ^(c)	Annual growth
0–4			–1.4	–0.5
5–9	1.9	0.6	–10.2	–3.6
10–14	0.9	0.3	–4.9	–1.7
15–19	2.8	0.9	–14.0	–5.0
20–24	–5.5	–1.9	–11.3	–4.0
25–29	5.4	1.7	1.6	0.5
30–34	–1.6	–0.5	13.5	4.2
35–39	3.8	1.2	29.4	8.6
40–44	4.9	1.6	29.8	8.7
45–49	1.9	0.6	42.2	11.7
50–54	18.7	5.7	50.5	13.6
55–59	9.9	3.2	57.6	15.2
60–64	8.5	2.7	35.8	10.2
65+	8.4	2.7	30.1	8.8
Total	6.7	2.2	8.4	2.7

(a) Growth rates were calculated based on estimated numbers of people with a severe or profound core activity restriction in 1996 and 1999.

(b) Growth rates were calculated based on estimated numbers of recipients of CSDA-funded services on the 'snapshot' day in 1996 and 1999.

(c) Total included service recipients who did not state their age.

Source: AIHW 1997; Table A17.1.

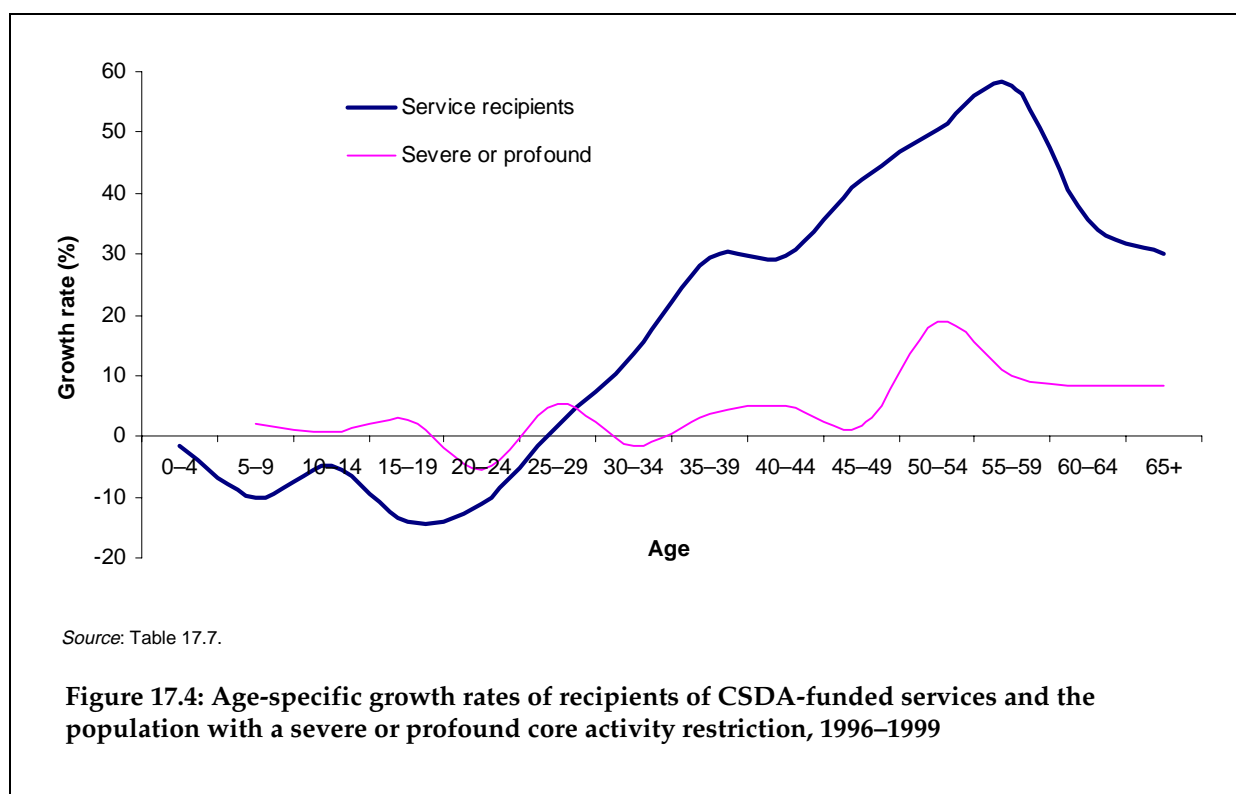
Table 17.8: Commonwealth, State and Territory government recurrent outlays on welfare services^(a) in 1996–97 prices, 1992–93 to 1997–98 (\$ million)

Year	Aged care services	Disability services
1992–93	1,069	1,456
1993–94	1,214	1,594
1994–95	1,450	1,645
1995–96	1,490	1,645
1996–97	1,745	1,737
1997–98	2,092	1,831
Average annual growth rate ^(b)	14.4%	4.7%

(a) Excluding government pensions and benefits.

(b) Five-year average annual growth rates are calculated using exponential growth.

Source: AHIW 1999d:13.



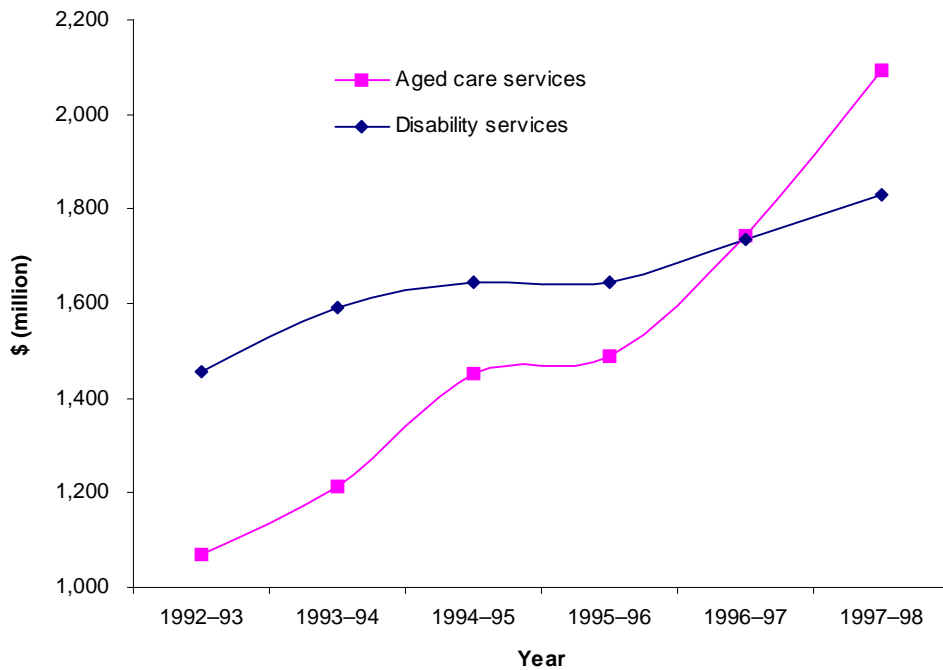
Potential transfer of people from employment services to other disability support services

As people with a disability age their service needs are likely to change. Retirement of people currently in Commonwealth-funded employment services may result in increased demand for alternative services (e.g. community access services), putting pressure on some areas of the CSDA program.

On the 'snapshot' day of the 1999 CSDA MDS data collection, there were 17,734 consumers of CSDA services who were currently in Commonwealth funded employment programs.¹⁵ As these consumers age, many of them may move (or attempt to move) to community access services or other CSDA services. Table 17.9 presents the 1999 CSDA MDS data on consumers of Commonwealth employment services and shows how many of these consumers also received other CSDA services.

Data on consumers in 1999 are derived via the use of a statistical linkage key, which enables removal of double-counting where a person receives more than one service on the snapshot day. However, Western Australia did not use the standard linkage key. Instead, records were pre-matched within the State, and so could not be linked to the Commonwealth data from employment services in Western Australia. This makes it difficult to estimate the number of consumers of employment services in Western Australia who also accessed other CSDA services (AIHW 2000b). Therefore, the estimates in Table 17.9 do not include Western Australian data.

¹⁵ The Commonwealth's final 1999 CSDA MDS data on the 'snapshot' day show that there were 18,392 consumers of CSDA services who were currently in Commonwealth-funded employment programs.



Source: Table 17.8.

Figure 17.5: Commonwealth, State and Territory government recurrent outlays on welfare services in 1996-97 prices, 1992-93 to 1997-98

On the 'snapshot' day of the 1999 collection, 15,558 consumers of CSDA services were in Commonwealth employment programs (excluding Western Australia); of those, 12,873 (or 83%) were not accessing any other CSDA services. Among those not receiving other CSDA services, 2,401 (15% of all consumers of Commonwealth employment services) were aged 45 or over and 1,268 (8%) were aged 50 or over.

If the national age and sex distribution of consumers were applied to the Western Australian data, there would be 335 consumers of Commonwealth employment services in Western Australia who were aged 45 or over, and were not receiving other CSDA services; of those, 178 consumers would be aged 50 or over. If these figures are included in the national estimates then, in 1999, there were 2,736 consumers of Commonwealth employment services who were aged 45 or over and were not accessing any other CSDA services; of these, 1,446 were aged 50 or over.

However, it is important to note that consumers who did not use employment services on the 'snapshot' day were not included in the estimates. Also, some people identified as using only employment services may have used other services during the year but not on the 'snapshot' day. Because of consumer turnover, and because service users may not actually receive a service every day, the estimates for the 'snapshot' day are much lower than the estimates for a full year (AIHW 2000b: Table 4.2).

Among consumers of Commonwealth employment services, 5,211 were aged 30-44 and were not accessing any other CSDA services (Table 17.9). Over the next decade, these consumers will be approaching their late 40s or 50s when many of them might choose to retire and possibly seek access to other types of services.

Table 17.9: Consumers of Commonwealth employment services: whether received other CSDA services, by age and sex, Australia, 1999^(a)

	Does not receive other services			Receives other services			All		
	Male	Female	Total	Male	Female	Total	Male	Female	Total
	Number								
15–19	730	347	1,077	45	23	68	775	370	1,145
20–29	2,611	1,493	4,104	367	252	619	2,978	1,745	4,723
30–44	3,297	1,914	5,211	767	559	1,326	4,064	2,473	6,537
45–64	1,545	782	2,327	414	247	661	1,959	1,029	2,988
65+	60	14	74	5	6	11	65	20	85
Not stated	45	35	80	0	0	0	45	35	80
<i>Total 45+</i>	<i>1,605</i>	<i>796</i>	<i>2,401</i>	<i>419</i>	<i>253</i>	<i>672</i>	<i>2,024</i>	<i>1,049</i>	<i>3,073</i>
<i>Total 50+</i>	<i>868</i>	<i>400</i>	<i>1,268</i>	<i>214</i>	<i>136</i>	<i>350</i>	<i>1,082</i>	<i>536</i>	<i>1,618</i>
Total	8,288	4,585	12,873	1,598	1,087	2,685	9,886	5,672	15,558
	Percentage of all consumers of employment services of that sex								
<i>Total 45+</i>	<i>28.3</i>	<i>14.0</i>	<i>15.4</i>	<i>7.4</i>	<i>4.5</i>	<i>4.3</i>	<i>35.7</i>	<i>18.5</i>	<i>19.8</i>
<i>Total 50+</i>	<i>8.8</i>	<i>7.1</i>	<i>8.2</i>	<i>2.2</i>	<i>2.4</i>	<i>2.2</i>	<i>10.9</i>	<i>9.4</i>	<i>10.4</i>
Total	83.8	80.8	82.7	16.2	19.2	17.3	100.0	100.0	100.0

(a) Consumer data are estimates obtained by adjusting data on service recipients for those who appear to have accessed more than one service type on the 'snapshot' day, using a statistical linkage key. The Western Australian data were excluded as it was not possible to link data from Commonwealth employment services with data from other service types in Western Australia (AIHW *Disability Data Briefing* Number 17, March 2000).

Source: AIHW analysis of the 1999 CSDA MDS collection.

Potential transfer to other services

It may be also useful to examine the profile of need and type of services received among ageing recipients of CSDA-funded services, to indicate their special needs as they potentially approach a service transition. Table 17.10 presents data on reported frequency of need for support for service recipients aged 45–64.¹⁶ In addition to self-care, mobility and communication, the data on areas of support need also include social skills, managing emotions, learning, working, home living, self-direction and other day activities.

Of 14,524 recipients aged 45–64, 5,814 (40%) received accommodation support services, 3,437 (23.7%) received employment services, 2,930 (20.2%) received community access services and 2,039 (14.0%) received community support services. A small proportion (2.1%) used respite services (Table A17.2).

The top section of Table 17.10 presents data on the support needs of recipients across all service types. The percentage who reported a need for frequent or continual assistance ranged from 34% for mobility to 63% for home living activities. The percentage of recipients

¹⁶ Some caution is needed in interpreting these data, because a person may have received services from more than one service provider on the 'snapshot' day, and will therefore be counted more than once.

reporting no need for support was highest for mobility (38%), communication (32%) and self care (30%), and lowest for home living (11%) and working (8%).

In comparison with other service types, higher proportions of accommodation service recipients tended to report need for frequent or continual support. This was the pattern across the range of areas of support. Recipients of employment services were less likely to need frequent or continual support with self-care and mobility than were recipients of other services.

Table 17.10: CSDA services received on the snapshot day: frequency of support needed by recipients aged 45–64, by service type and area of activity in which support needed (per cent), 1999

Area of support	None	Occasional	Frequent	Continual	Total frequent and continual	Not applicable	Not known /not stated
All service types							
Self-care	30.0	25.3	18.4	22.9	41.3	0.0	3.4
Mobility	38.3	25.7	16.5	17.0	33.5	0.0	2.3
Communication	31.7	29.6	17.4	19.0	36.4	0.0	2.3
Social skills	18.8	30.7	23.7	23.4	47.1	0.1	3.3
Managing emotions	16.4	32.3	25.3	24.0	49.3	0.1	2.0
Learning	13.4	25.4	27.9	29.1	57.0	0.7	3.5
Working	7.9	18.0	15.7	44.3	60.0	8.2	5.9
Home living	11.1	18.8	25.2	38.1	63.3	0.5	6.3
Self-direction	13.1	27.3	27.6	28.9	56.5	0.1	2.9
Other day activity	14.3	26.1	24.1	26.5	50.6	1.4	7.5
Accommodation support							
Self-care	17.8	24.4	22.4	33.3	55.7	0.1	2.1
Mobility	30.5	25.4	19.4	22.6	42.0	0.0	2.0
Communication	24.1	28.8	19.7	25.2	44.9	0.0	2.2
Social skills	12.6	26.3	26.2	32.1	58.3	0.2	2.6
Managing emotions	10.6	27.5	27.6	33.4	61.0	0.1	0.8
Learning	8.9	19.9	29.1	38.2	67.3	1.0	2.8
Working	6.6	10.9	12.8	53.0	65.8	10.8	5.8
Home living	3.0	14.4	27.0	52.4	79.4	0.8	2.4
Self-direction	8.0	21.3	29.5	38.6	68.1	0.2	2.4
Other day activity	6.8	23.5	27.1	36.7	63.8	1.8	4.0
Employment							
Self-care	51.2	28.3	10.8	5.8	16.6	—	3.9
Mobility	55.7	27.5	8.8	7.1	15.9	—	0.9
Communication	38.6	34.9	15.9	9.8	25.7	—	0.8
Social skills	25.1	43.4	20.2	9.0	29.2	—	2.3
Managing emotions	22.6	42.6	23.0	9.5	32.5	—	2.3
Learning	13.4	41.0	28.5	15.2	43.7	—	1.9
Working	7.4	45.2	27.8	18.7	46.5	—	0.8
Home living	23.5	26.4	21.5	15.2	36.7	—	13.3
Self-direction	16.4	40.4	27.6	13.6	41.2	—	1.9
Other day activity	29.2	31.2	15.5	7.9	23.4	—	16.3

(continued)

Table 17.10 (continued): CSDA services received on the snapshot day: frequency of support needed by recipients aged 45–64, by service type and area of activity in which support needed (per cent), 1999

Area of support	None	Occasional	Frequent	Continual	Total frequent and continual	Not applicable	Not known/not stated
Community support							
Self-care	33.8	22.3	15.7	21.4	37.1	0.2	6.5
Mobility	35.7	24.6	17.0	18.0	35.0	0.2	4.6
Communication	43.6	27.7	11.8	11.8	23.6	0.2	4.9
Social skills	27.7	29.1	20.0	16.1	36.1	0.2	6.9
Managing emotions	21.5	32.5	23.2	16.6	39.8	0.2	6.0
Learning	25.7	25.4	21.9	17.6	39.5	1.1	8.2
Working	14.8	9.8	8.5	36.7	45.2	16.6	13.6
Home living	15.0	22.1	22.7	32.0	54.7	0.1	8.1
Self-direction	22.0	29.1	23.3	19.1	42.4	0.2	6.3
Other day activity	17.2	27.2	22.3	21.4	43.7	4.1	7.8
Community access							
Self-care	27.8	25.6	21.3	22.3	43.6	—	3.0
Mobility	36.0	25.4	19.0	17.0	36.0	0.0	2.5
Communication	28.4	26.8	18.9	23.5	42.4	0.0	1.3
Social skills	16.8	25.8	26.0	28.4	54.4	0.1	2.9
Managing emotions	15.7	28.3	25.2	29.5	54.7	—	1.2
Learning	12.2	18.3	29.5	36.8	66.3	0.5	2.8
Working	5.9	6.8	13.2	62.4	75.6	6.2	5.4
Home living	10.4	16.1	28.2	40.5	68.7	0.2	4.5
Self-direction	12.0	22.6	27.2	35.5	62.7	0.0	2.7
Other day activity	10.3	24.8	29.1	32.0	61.1	0.5	3.2
Respite							
Self-care	22.4	23.7	16.8	31.3	48.1	—	5.9
Mobility	31.3	24.0	21.1	17.8	38.9	—	4.1
Communication	49.7	22.7	12.8	9.5	22.3	—	5.2
Social skills	25.0	27.6	19.4	18.1	37.5	1.3	8.5
Managing emotions	26.0	32.4	22.4	14.8	37.2	—	4.4
Learning	27.0	24.0	22.4	16.1	38.5	2.0	8.5
Working	10.9	7.6	7.9	44.1	52.0	14.1	15.4
Home living	5.9	19.1	23.4	38.2	61.6	5.3	8.2
Self-direction	24.0	25.7	23.7	19.1	42.8	1.6	5.9
Other day activity	10.2	22.4	28.0	25.0	53.0	1.3	13.1

- (a) An individual may be counted more than once if more than one service type was accessed on the 'snapshot' day.
 (b) Data for recipients of CSDA-funded services with service types Advocacy, Information/referral, Combined advocacy/information, Print disability/alt. formats of communication, Service evaluation/training, Peak bodies, Research/development and Other were not collected.
 (c) Data on managing emotions for recipients of CSDA services funded by Western Australia were not collected and 1,161 recipients are excluded from this support area.
 (d) Data provided by the Commonwealth are preliminary and cover 98% of Commonwealth-funded services.
 — Nil or rounded to zero.

Source: Table A17.2; AIHW analysis of 1999 CSDA MDS collection.

17.4 Summary and discussion

Many of the factors discussed in this report may affect future trends in demand for and provision of disability support services. This chapter has concentrated on the possible effects of population growth and ageing, assuming that the trend in population growth follows the ABS 1998 population projections. Growth estimates of severe or profound core activity restriction were carried out based on a number of assumptions: the age- and sex-specific prevalence rates of severe or profound core activity restriction in 1998 remain constant, and other factors affecting the prevalence rate or service use rates remain unchanged in the future.

Growth estimates of severe or profound core activity restriction

Estimates of future growth in the population potentially needing services are based on simplifying assumptions.

The projected demographic trends, especially population ageing, indicate a significant growth in the estimated number of people with a severe or profound core activity restriction between 2000 and 2006. Estimates based on 1998 age- and sex-specific prevalence rates indicate that:

- The total number of Australians with a severe or profound core activity restriction is estimated to increase by 11.6% (137,600 people). This overall growth is mainly attributable to the rapid increase in the age groups 45–64 (19.3%, or 59,500 people) and 65 and over (15%, or 76,300 people).
- The expected increase in the number of people aged 0–65 with a severe or profound core activity restriction is 9.0% (61,300 people).
- The growth in the working age population (age 15–64) is estimated at 12.0% (64,300 people).
- The number of people with a severe or profound core activity restriction aged under 15 is expected to decrease by 2%.

The future number of people with a severe or profound core activity restriction was also estimated using 1993 age- and sex-specific prevalence rates. The estimates based on the two sets of prevalence rates show a similar pattern but the magnitude of the growth differs. In 2000, the estimated number of people with a severe or profound core activity restriction using 1998 rates is higher than the estimated number using 1993 rates by 311,400 for people aged 5 and over, and 338,600 for people of all ages.

The differences between the two sets of estimates are due to differences in age- and sex-specific prevalence rates between 1993 and 1998. In comparison with the 1993 survey, the reported prevalence in 1998 was higher than in 1993 for several age groups, particularly the age groups 45–64 and 70–79 for males and females, and the age group 5–14 for males. The higher overall prevalence in 1998 was also partly due to the inclusion of children aged under 5 with a severe or profound core activity restriction.

The changes between 1993 and 1998 may reflect improved case identification in the 1998 survey, rather than actual increases in disability prevalence and need for support. Hence, the estimated numbers of people with a severe or profound core activity restriction are based on 1998 prevalence rates and the rates are assumed to remain constant over the projection

period. The changes in the prevalence rates between 1993 and 1998 have not been a factor in the assumptions.

Trends in service use

Future trends in service use are determined by the interplay of various factors, including service provision policies and the level of available resources. The increase in the number of people with a severe or profound core activity restriction may not necessarily result in an equivalent increase in the number of consumers of CSDA-funded services.

The current age distribution of CSDA service users may change under the effects of both population ageing and the ageing of people with a disability. There is evidence that age-specific rates of service use have not been stationary over recent years. Between 1996 and 1999, the overall growth rate of service recipients was 8.4%, or 2.7% per year. The general shape of the age-specific growth rates of service recipients followed a similar but 'accelerated' pattern to that of the population with a severe or profound core activity restriction, in particular from the age group of 35+. During this period, the age distribution of service recipients has also changed over time. In 1996 there was a sharp peak in the 20–29 year age group, while by 1999 the peak was not so sharp and had moved towards the 30–39 year age group. The current peak of service use in the age group 20–39 years may partly represent a 'new wave' of service users who began receiving services at younger ages, and may be assumed likely to continue to use services.

It could be expected that this trend may continue, with the combined effects of growth in the number of people in the upper end of the working-age population and longer life expectancies of people with a disability. Between 2000 and 2006, the number of people with a severe or profound core activity restriction in the age group 45–64 is projected to increase by 19.3%, or 59,500 (based on 1998 prevalence rates).

The 'early retirement' of people currently in Commonwealth-funded employment services may create needs for other services to replace the employment services, putting pressure on some areas of the CSDA program. Similarly, 'retirement' of people using accommodation services may result in a need for greater service flexibility, either to enable 'ageing in place' or to facilitate a smooth transition to appropriate residential aged care.