



Australian Government

Australian Institute of
Health and Welfare

Australia's welfare

2007

DISADVANTAGE AND DIVERSITY

Children, Youth & Families

Sushma Mathur & Cynthia Kim



Outline

- Demographic overview
- Australian families
- Use of child care services
- Early education
- Educational achievement and transition to employment
- Children and young people at risk

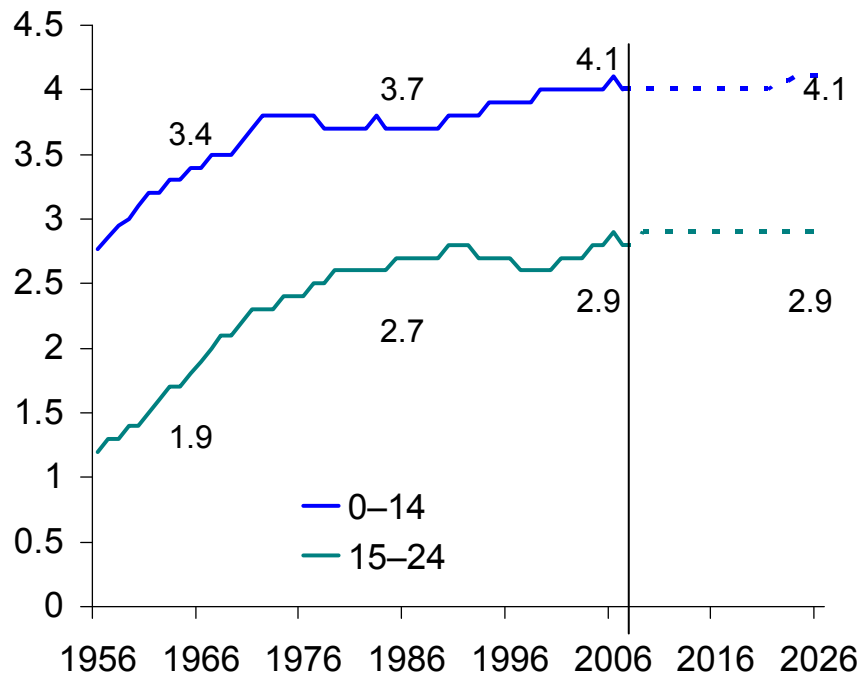
Demographic overview

- Definition (children: 0-14; youth: 15-24)
- Represent 1/3 of Australian population
 - 4 million children (20% of total population)
 - 2.9 million young people (14%)
- 2/3 live in major cities
- 257,151 Indigenous children and young people in 2006
 - 4% of all children, 3% of all young people

Trends— Children and young people

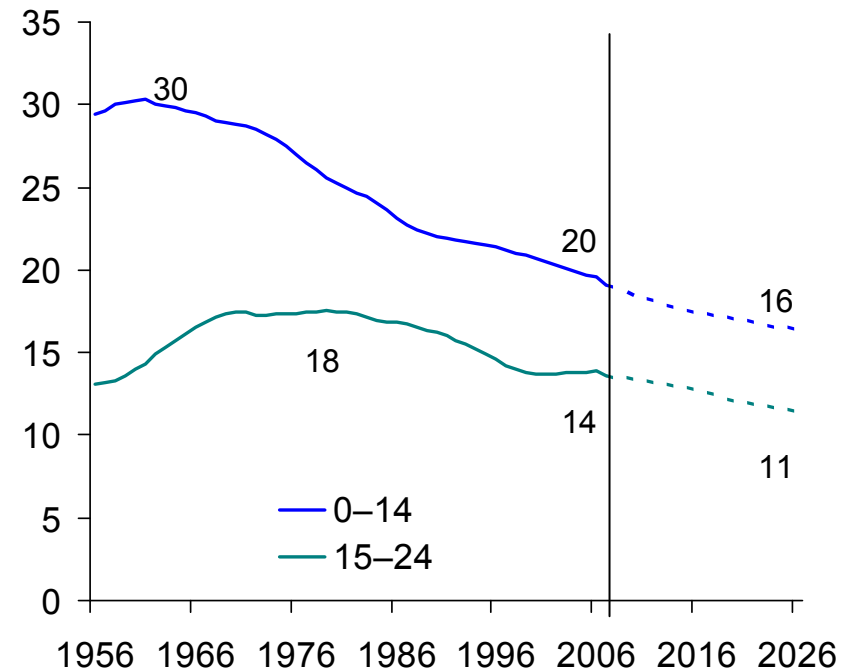
Number of children and young people

Million



Proportion of children and young people

Per cent



Fertility trends

- Trends in fertility rates

1961 → 3.55 births

2001 → 1.73 births

2006 → 1.81 births

- Consequences

- Will the numbers remain stable ??

- Will the proportions fall as dramatically??

Australian families

- 2.5 million families with children under 18 in 2003
 - 71% in intact families
 - 22% in one-parent families
 - 3% blended, 4% step-parent families
- 23% (1.1m children) had parent living elsewhere
- 22,500 grandparent families

Trends in family composition

- More one-parent families & fewer intact couple families than in early 1990's

	1992	2003
Intact couple families	76%	71%
One-parent families	17%	22%
Step families	3.5%	3.9%
Blended families	2.9%	3.1%

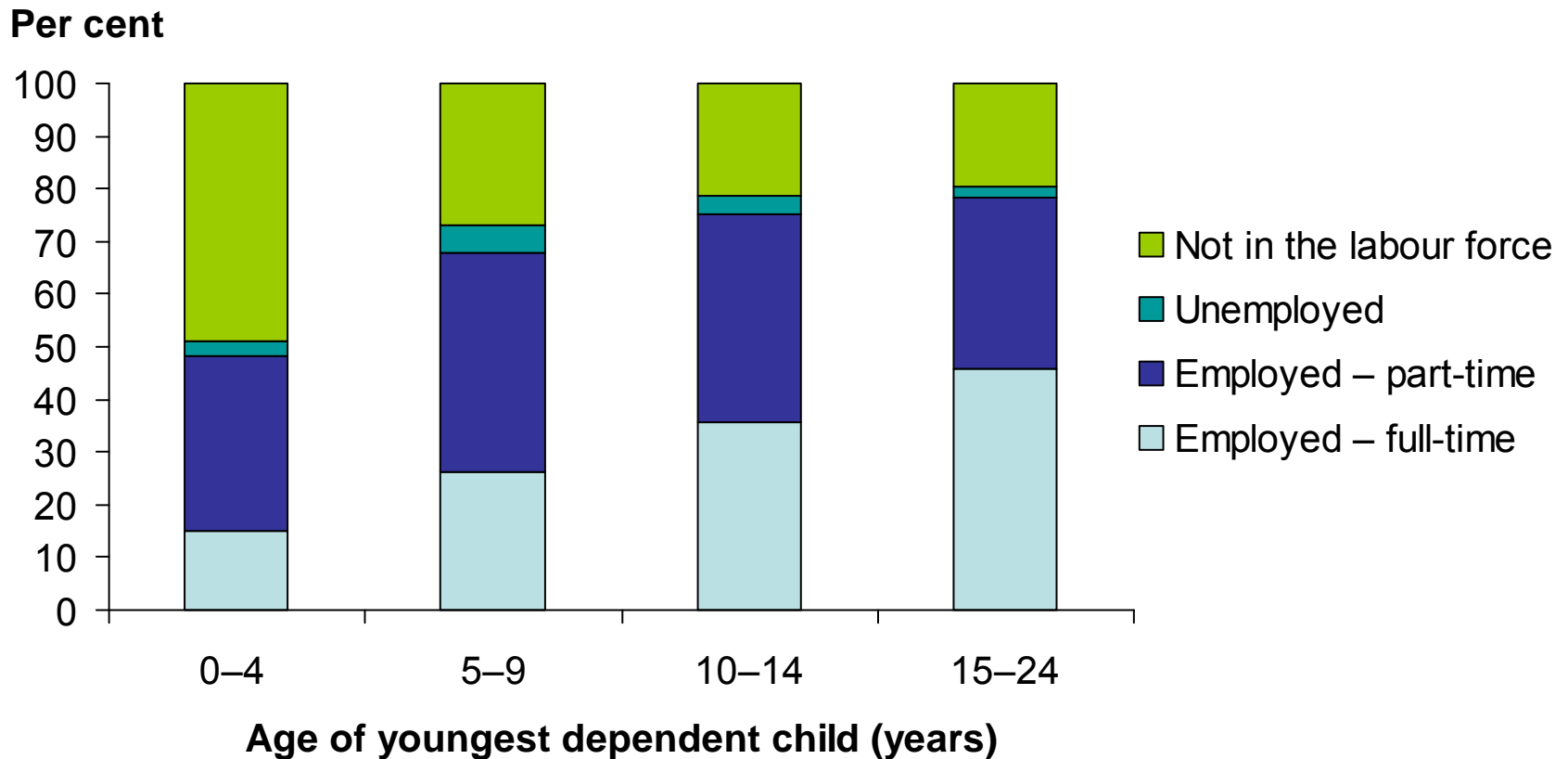
- More adult children (25+) living at home

Parental employment

- Most families with dependent children have at least one parent employed

	1997	2007
At least one parent employed	82%	94%
<i>One-parent families</i>	47%	59%
<i>Couple families</i>	91%	95%

Employment status of mothers in 2007

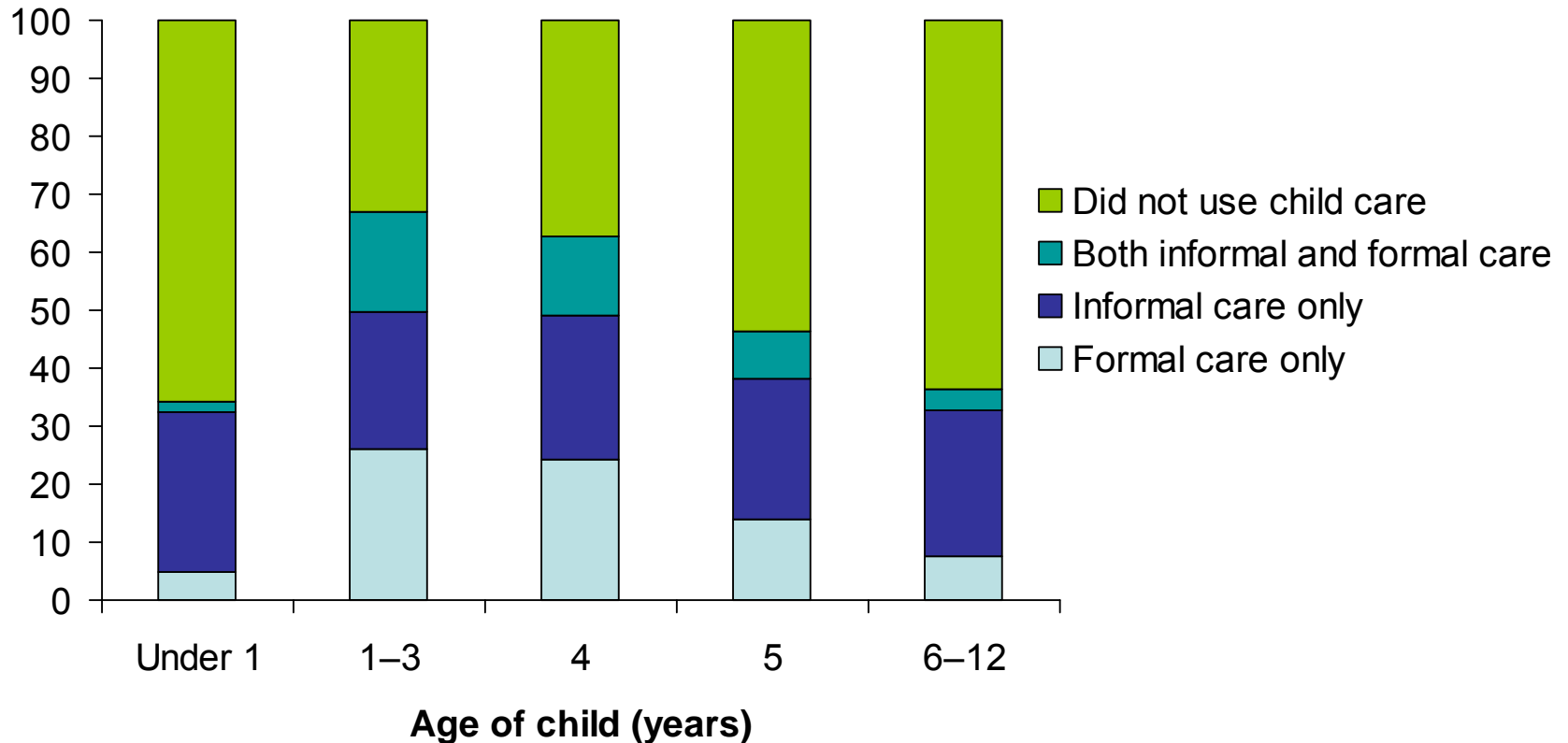


Use of child care services

- *Child Care Act* introduced in 1972
- Rapid expansion, from 46,000 in 1983 to 600,000 places in 2006
- 46% children (0-12 years) used some form of child care (1.6 million)
- Higher proportion using informal
- Largest increases in formal care

Use of child care services cont'd

Per cent



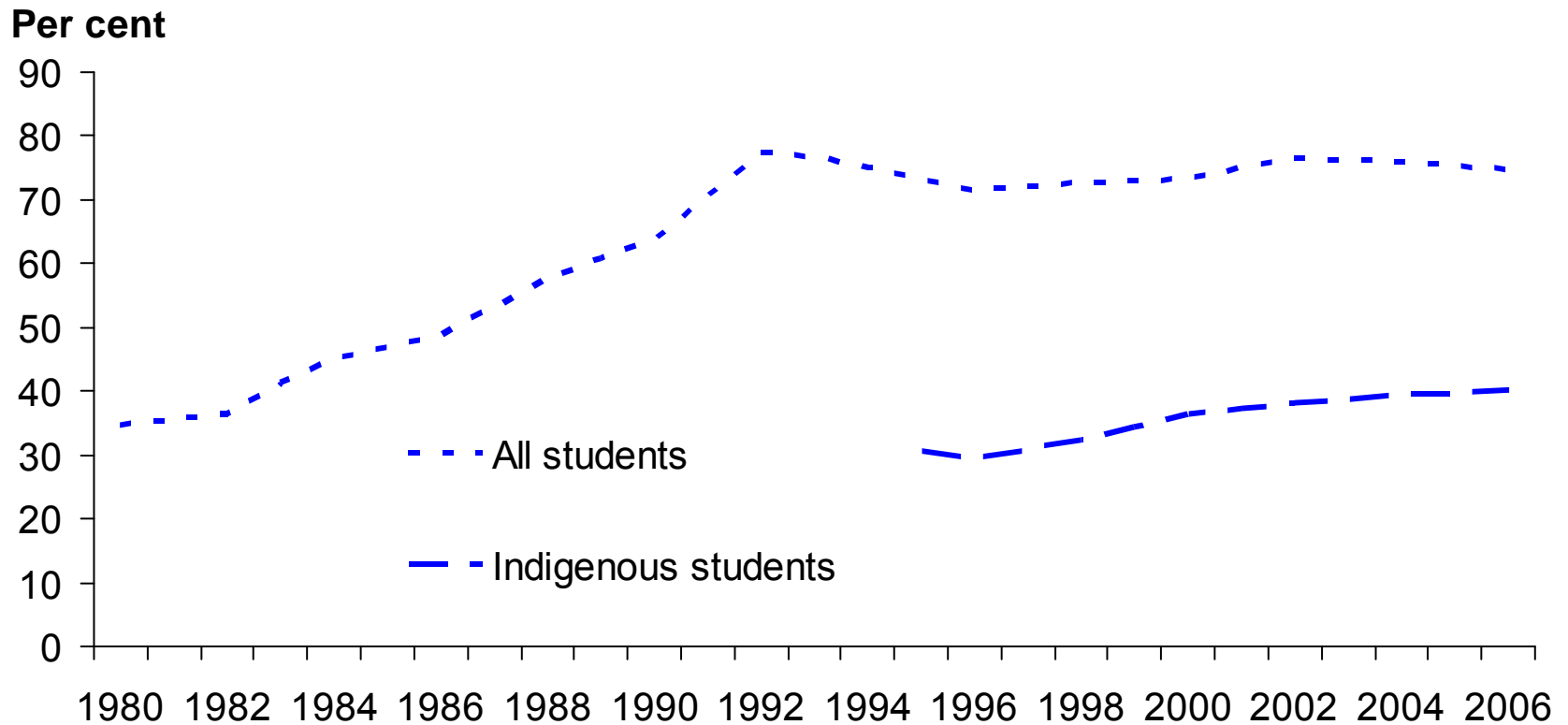
Early childhood education

- 257,100 children attended preschool, 2005
 - 62% of all 4-year olds
- Most attend for 2-3 days a week

Educational achievement

- Most year 3, 5, 7 students meet national reading, writing and numeracy benchmarks
- Australian students do very well by OECD standards (PISA)
- Student achievement lower among some population groups
- Most young people complete year 12 (75%)

Year 12 apparent retention rate



Employment in young people

15 to 19 yr olds	1987	2007
<i>Full time employed</i>	32%	18%
<i>Part time employed</i>	17%	33%
20 to 24 yr olds		
<i>Full time employed</i>	66%	54%
<i>Part time employed</i>	9%	22%

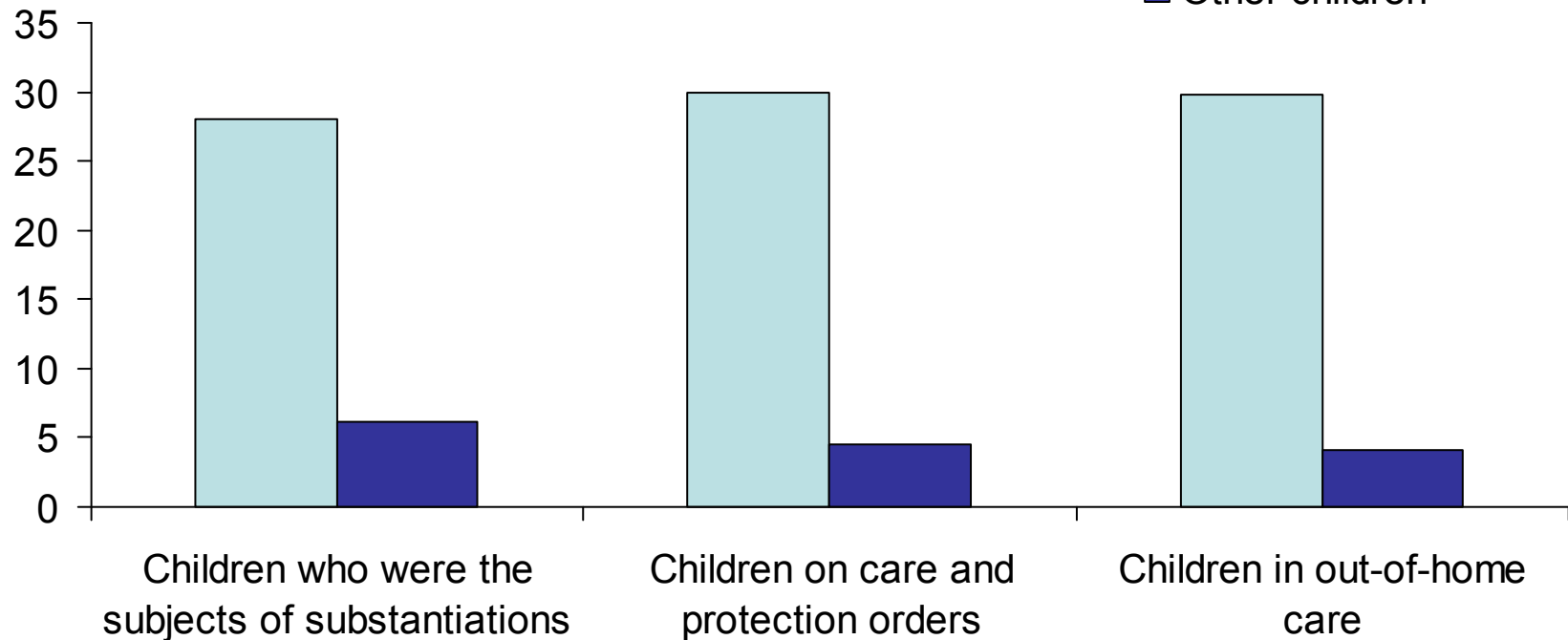
Child Protection

- 34,517 children subject of substantiations in 2005-06
- 27,188 children on care and protection orders, 32% increase from 2002
- 25,454 children in out-of-home care, 35% increase from 2002
- Some groups over represented, eg. Indigenous children

Children protection cont'd

Rate per 1,000 children
aged 0 to 17, 2005-06

Indigenous children
Other children



Juvenile offenders

- Around 13,000 young people experience juvenile justice supervision
- 84% community-based, 39% detention-based supervision
- Over representation of Indigenous (44.4 per 1,000 vs 2.9 per 1,000)

Summary

- 7 in 10 children live in intact families
- Most families have at least one parent employed & proportion increased in last decade
- 84% attended formal care/ preschool before starting full-time school
- Most children are meeting numeracy and literacy benchmarks at school
- 3 in 4 young people stay at school to complete year 12
- Most young people are engaged in either education and/or work

Summary cont'd

- 1 in 5 children live in a one-parent family & proportion increased in last decade
- Increasing number of children in child protection system
- 13,000 young people experience juvenile justice supervision each year
- Indigenous children and young people perform significantly worse in literacy and numeracy assessments
- Indigenous young people have lower yr 12 apparent retention rate and are over-represented in the child protection and juvenile justice systems.

Thank you ...