



National

MHSPF

Mental Health Service Planning Framework

EPIDEMIOLOGY FLOW CHARTS

JUNE 2023 - AUS V4.3

Population Based Planning for Mental Health

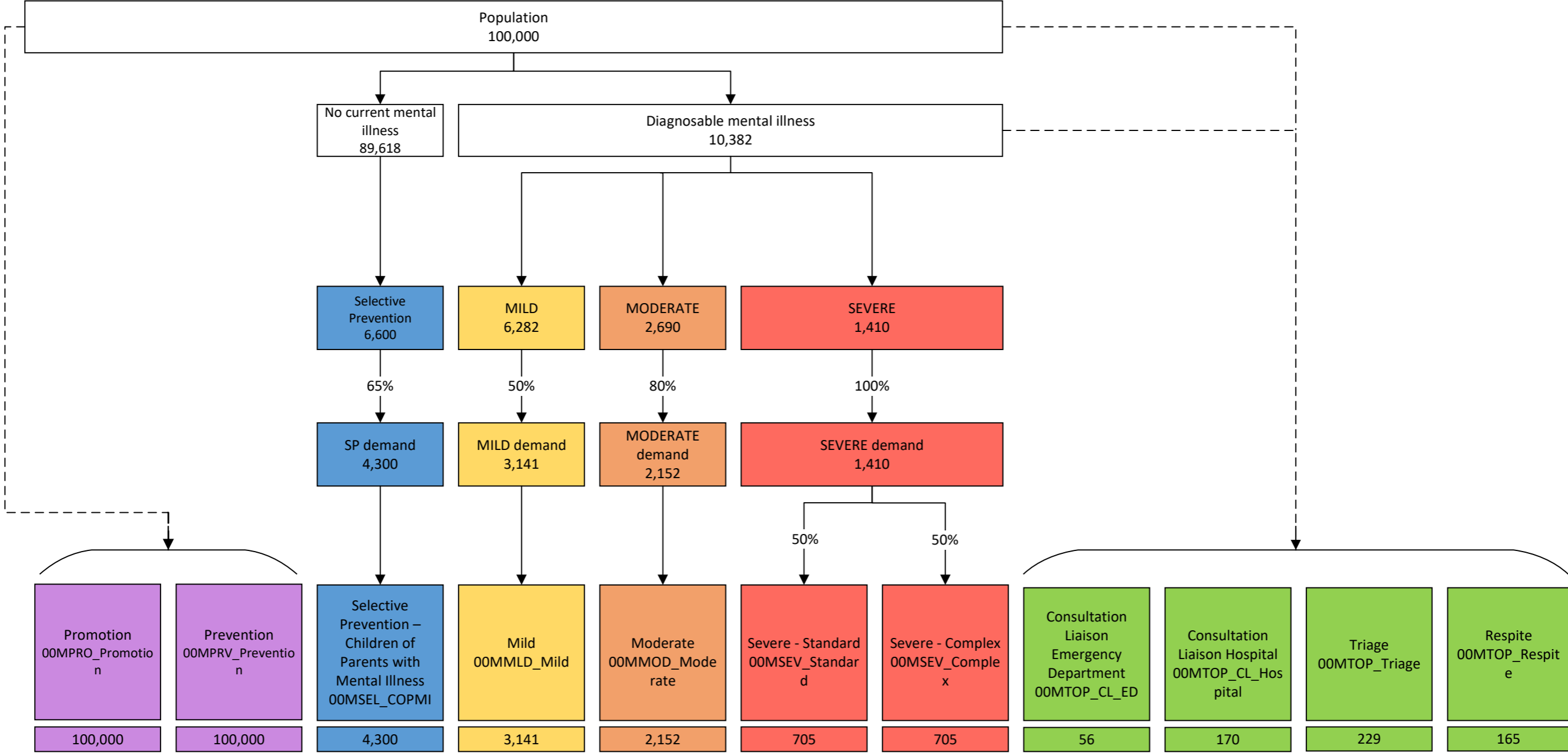
Acknowledgment

This document builds on earlier NMHSPF model development and documentation commissioned by the Australian Government Department of Health and developed by New South Wales Ministry of Health (Phase 1, 2011-2013) and The University of Queensland (Phase 2, 2016; Phase 3, 2018-2021).

Suggested citation

Diminic, S., Page, I., Gossip, K., Pagliaro, C., Wright, E., John, J., Comben, C., & Whiteford, H. 2023. Epidemiology Flow Charts for the National Mental Health Service Planning Framework – Commissioned by the Australian Government Department of Health and Aged Care. Version AUS V4.3. The University of Queensland, Brisbane.

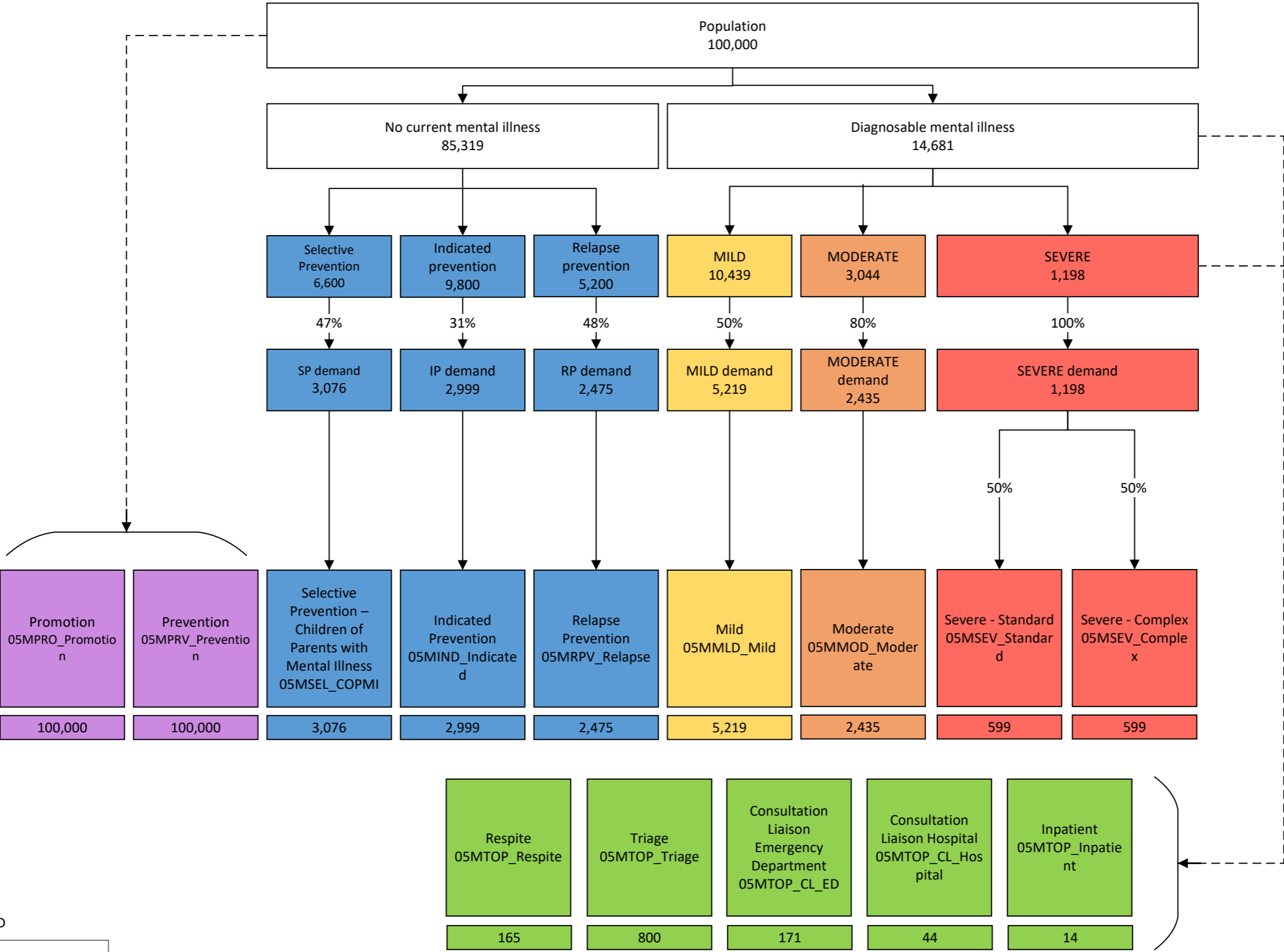
INFANTS and PRE SCHOOLERS (0-4 years)



LEGEND

PROMOTION/ PREVENTION	Care profile description CARE PROFILE CODE
OTHER	
MILD	
MODERATE	
SEVERE	Total persons
TOP-UP	

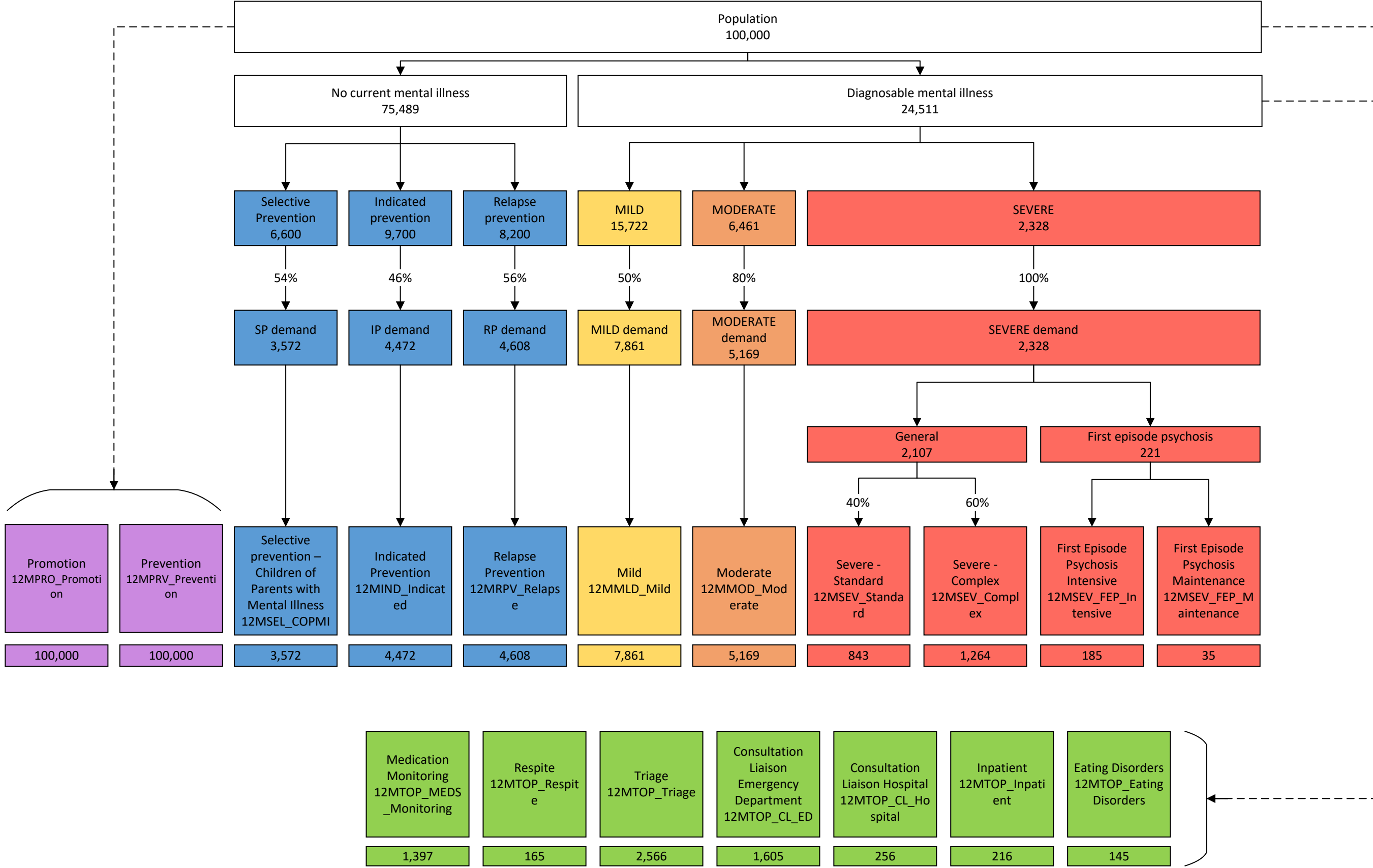
PRIMARY SCHOOLERS (5-11 years)



LEGEND

PREVENTION/PROMOTION	Care profile description CARE PROFILE CODE
OTHER	
MILD	
MODERATE	
SEVERE	Total persons
TOP-UP	

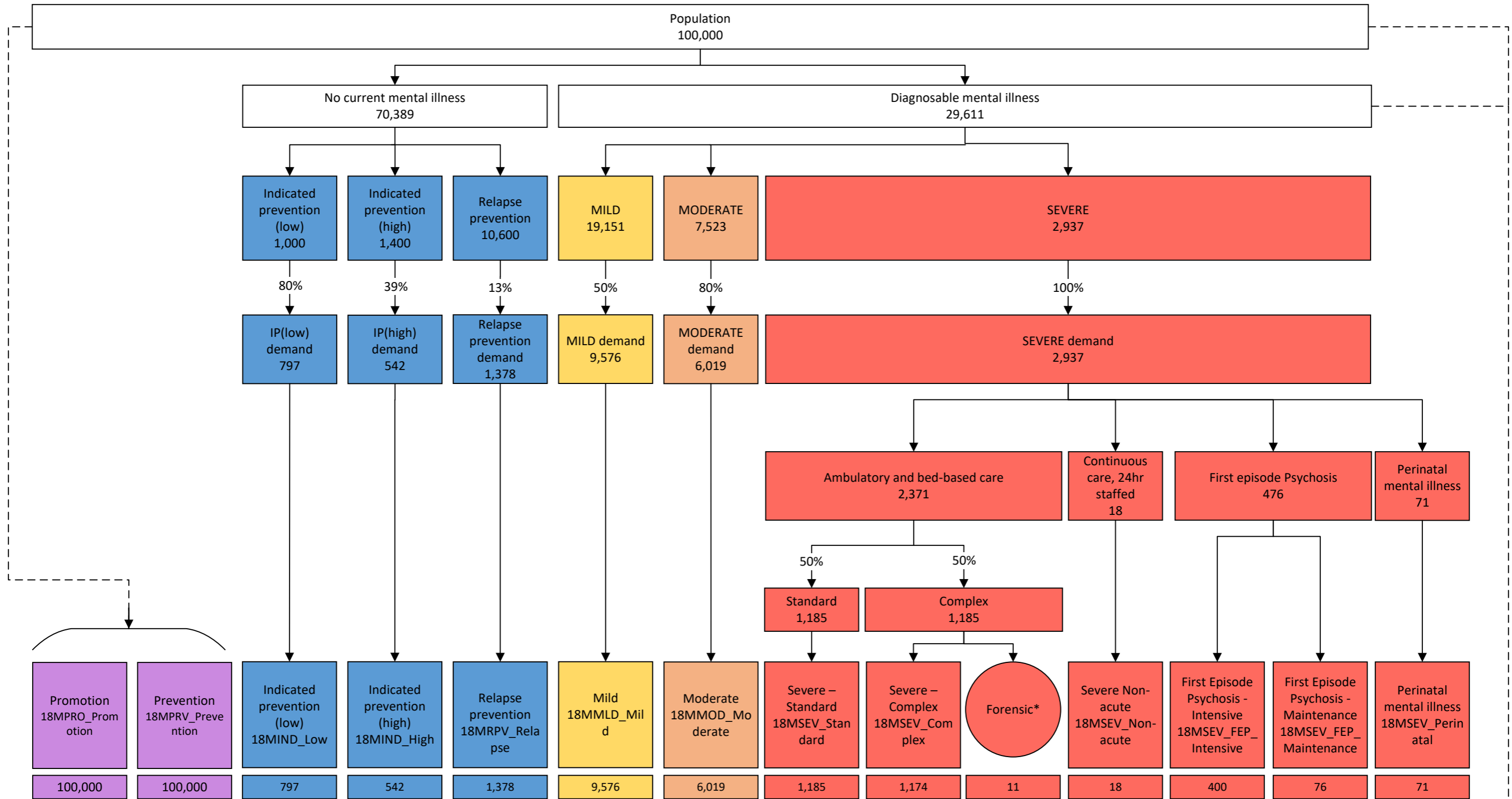
ADOLESCENTS (12-17 years)



LEGEND

PREVENTION/PROMOTION	Care profile description CARE PROFILE CODE
OTHER	
MILD	
MODERATE	
SEVERE	Total persons
TOP-UP	

YOUNG ADULTS (18-24 years)



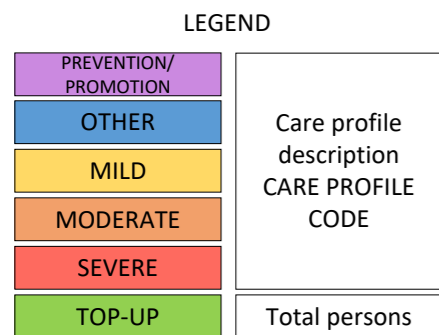
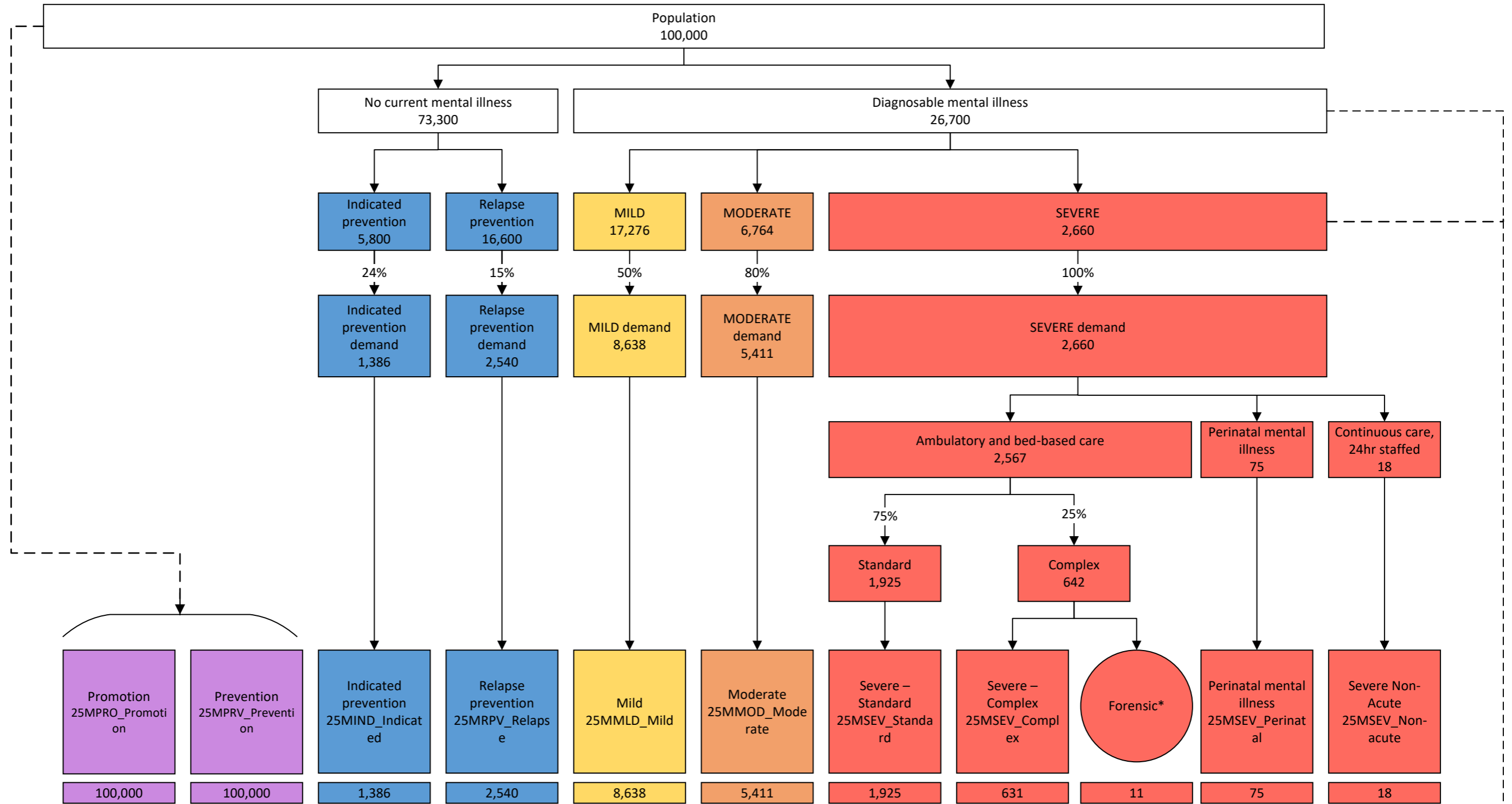
LEGEND

PREVENTION/PROMOTION	Care profile description CARE PROFILE CODE
OTHER	
MILD	
MODERATE	
SEVERE	Total persons
TOP-UP	

*Outputs included in NMHSPF Forensic Model

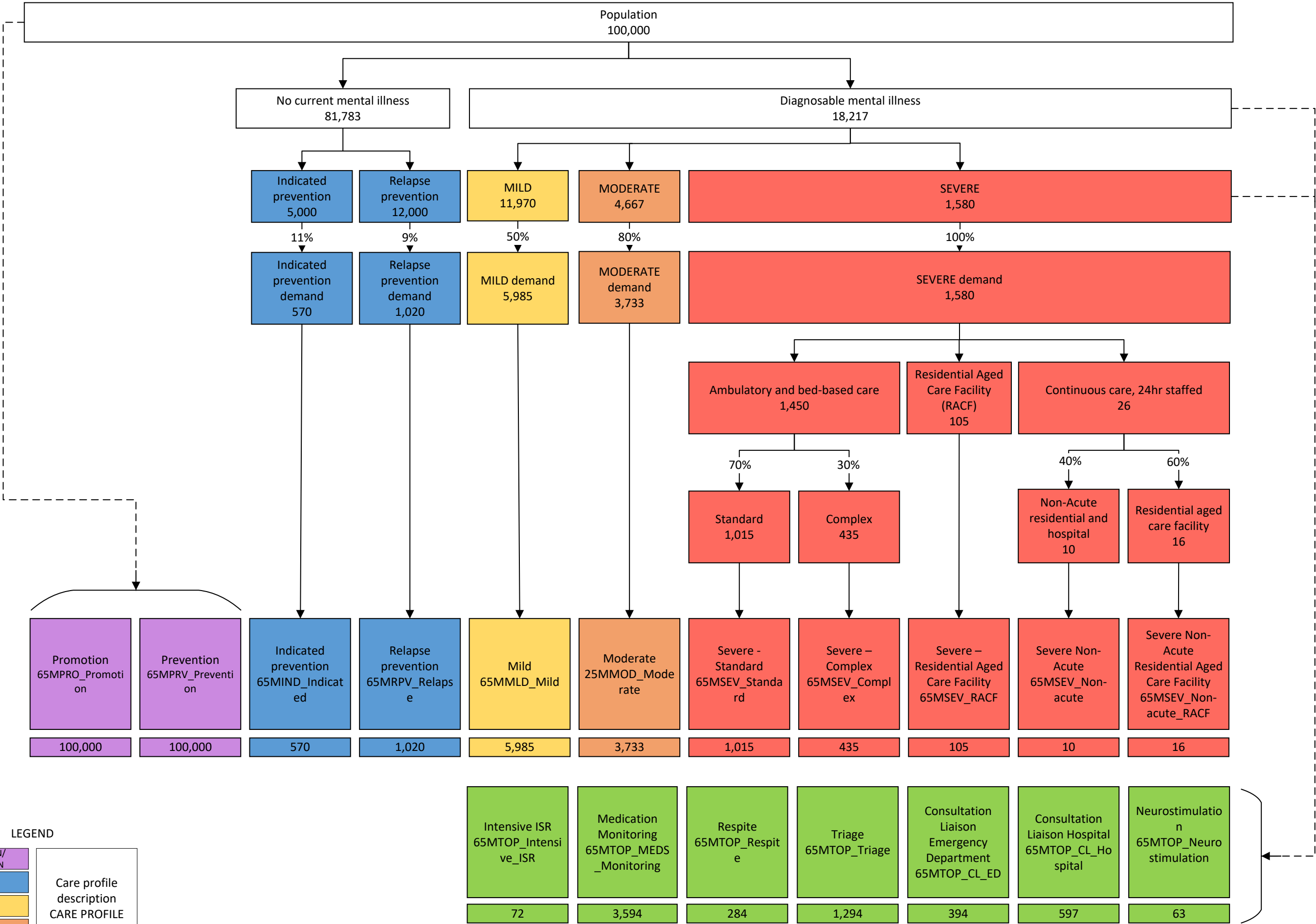
Medication Monitoring (18MTOP_MED_S_Monitoring)	Eating Disorders (18MTOP_EatingDisorders)	Respite (18MTOP_Respite)	Parenting Support (18MTOP_Parenting)	Neurostimulation (18MTOP_Neurostimulation)	Intensive ISR (18MTOP_Intensive_ISR)	Triage (18MTOP_Triage)	Consultation Liaison Emergency Department (18MTOP_CL_ED)	Consultation Liaison Hospital (18MTOP_CL_Hospital)
2,074	353	165	553	22	80	2,115	2,133	266

ADULTS (25-64 years)



*Outputs included in NMHSPF Forensic Model

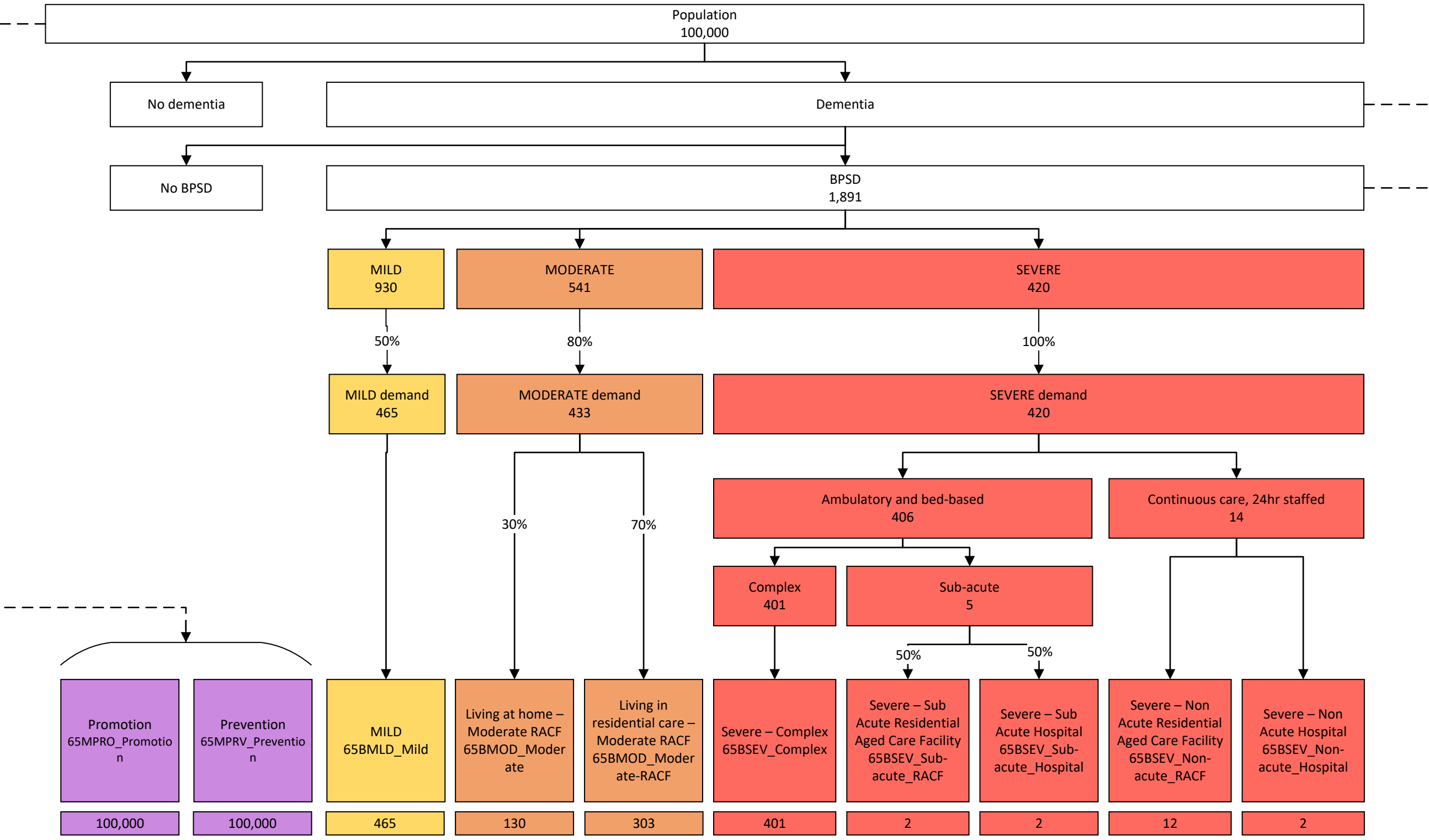
OLDER ADULTS (65+ years) MH



LEGEND

PREVENTION/PROMOTION	Care profile description CARE PROFILE CODE
OTHER	
MILD	
MODERATE	
SEVERE	Total persons
TOP-UP	

OLDER ADULTS (65+ years) BPSD

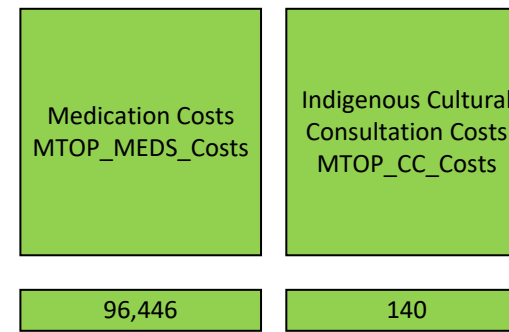


LEGEND

PREVENTION/PROMOTION	Care profile description CARE PROFILE CODE
OTHER	
MILD	
MODERATE	
SEVERE	Total persons
TOP-UP	

Consultation Liaison Hospital 65BTOP_CL_Hospital	Consultation Liaison Emergency Department 65BTOP_CL_ED
483	500

ALL AGES



LEGEND

PROMOTION/PREVENTION	Care profile description CARE PROFILE CODE
OTHER	
MILD	
MODERATE	
SEVERE	
TOP-UP	Total persons