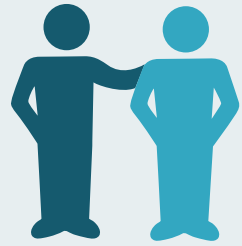


Specialist homelessness services:
**On any given day, across
Victoria**



2020

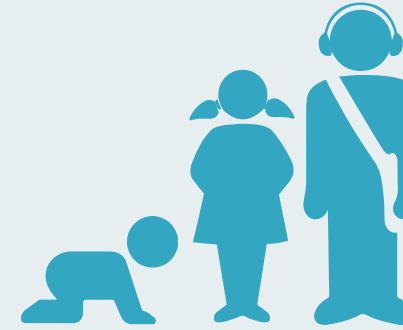


595 specialist
homelessness services (SHS)
agencies **were**
supporting almost
23,400 clients



more than **3,300**
of these clients
were young people
presenting alone^(a)

&



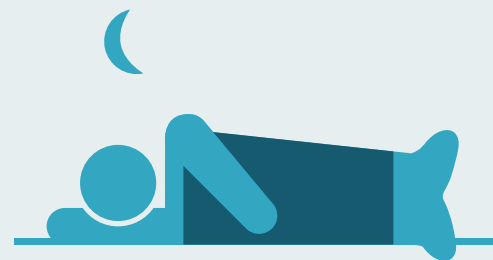
nearly **6,100**
were children in
families that were
being supported



126 clients
received support for
the first time ever
from a SHS agency^(b)



almost **1,700**
clients **spent the night**
sleeping in crisis
accommodation^(c)



around **2,900**
clients **report having**
slept rough in the
last month^(d)

108

requests
for assistance were
unable to be met



agencies closed
211 cases^(e)
with **71%** having
stable housing outcomes^(f)

(a) Young people presenting alone are aged 15–24. Children are aged 0–17. In this infographic, these groups are mutually exclusive.

(b) Clients who had not previously received SHS support since the collection began in 2011–12.

(c) Crisis accommodation refers to short-term or emergency accommodation, and may include hotels, motels and caravan parks.

(d) Clients who said they were 'Sleeping rough or in non-conventional accommodation' in the last month (previously homeless).

(e) Clients who had a valid 'homelessness last reported' status.

(f) Only includes cases where housing status at the end of support was known.