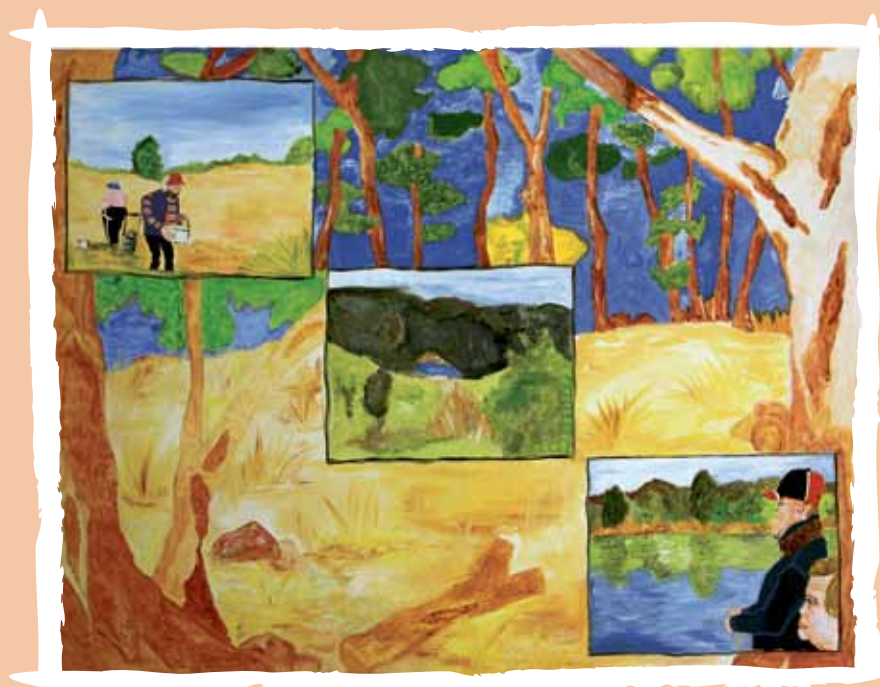


The tenth biennial welfare report of the
Australian Institute of Health and Welfare



Australia's **2011** **welfare**

Australian Institute of Health and Welfare
Canberra

The Australian Institute of Health and Welfare is a major national agency which provides reliable, regular and relevant information and statistics on Australia's health and welfare. The Institute's mission is *authoritative information and statistics to promote better health and wellbeing.*

© Australian Institute of Health and Welfare 2011 

This product, excluding the AIHW logo, Commonwealth Coat of Arms and any material owned by a third party or protected by a trademark, has been released under a Creative Commons BY 3.0 (CCBY 3.0) licence. Excluded material owned by third parties may include, for example, design and layout, images obtained under licence from third parties and signatures. We have made all reasonable efforts to identify and label material owned by third parties.

You may distribute, remix and build upon this work. However, you must attribute the AIHW as the copyright holder of the work in compliance with our attribution policy available at <www.aihw.gov.au/copyright/>. The full terms and conditions of this licence are available at <<http://creativecommons.org/licenses/by/3.0/au/>>.

Enquiries relating to copyright should be addressed to the Head of the Communications, Media and Marketing Unit, Australian Institute of Health and Welfare, GPO Box 570, Canberra ACT 2601.

This publication is part of the Australian Institute of Health and Welfare's Australia's welfare series. A complete list of the Institute's publications is available from the Institute's website <www.aihw.gov.au>.

ISBN 978-1-74249-209-4

Suggested citation

Australian Institute of Health and Welfare 2011. Australia's welfare 2011. Australia's welfare series no. 10. Cat. no. AUS 142. Canberra: AIHW.

Australian Institute of Health and Welfare

Board Chair
Dr Andrew Refshauge

Director
David Kalisch

Any enquiries about or comments on this publication should be directed to:

Communications, Media and Marketing Unit
Australian Institute of Health and Welfare
GPO Box 570
Canberra ACT 2601
Tel: (02) 6244 1032
Email: info@aihw.gov.au

Published by the Australian Institute of Health and Welfare

Cover art by Paul Bilton

Text edited by Sue Wales

Layout by Tony Kelly—[tk] type

Printed by Paragon Printers Australasia

**Please note that there is the potential for minor revisions of data in this report.
Please check the online version at <www.aihw.gov.au> for any amendments.**



Australian Government
Australian Institute of
Health and Welfare

*Authoritative information and statistics
to promote better health and wellbeing*

The Hon Nicola Roxon MP
Minister for Health and Ageing
Parliament House
CANBERRA ACT 2600

Dear Minister

On behalf of the Board of the Australian Institute of Health and Welfare I am pleased to present to you *Australia's welfare 2011*, as required under subsection 31 (1A) of the *Australian Institute of Health and Welfare Act 1987*.

I commend this report to you as a significant contribution to national information on welfare services and assistance and to the development and evaluation of welfare policies and programs in Australia.

Yours sincerely

Dr Andrew Relshauge
Chairperson of the Board

22 September 2011

Contents

Preface	vii
Acknowledgments	ix
Symbols	x
Section 1 Population overview	1
1 Australia's people	3
2 Family and household structure	27
3 Economic participation	45
Section 2 Target groups for welfare services	83
4 Children and young people	85
5 Disability and disability services	129
6 Ageing and aged care	167
7 Informal carers	205
8 Homelessness	237
9 Housing assistance	273
Section 3 Resourcing welfare services	309
10 Community services workforce	311
11 Welfare expenditure	337
Section 4 Indicators of Australia's welfare	359
12 Indicators of Australia's welfare	361
Abbreviations	399
Glossary	404
Appendix A: Tables	412
Appendix B: Major income support payments	413
Appendix C: Technical notes on welfare expenditure	416
Index	431

Note: Appendix tables can be found online at www.aihw.gov.au and are also available on the CD accompanying the printed book.

Preface

Welcome to *Australia's welfare 2011*, the tenth biennial report on welfare services and statistics produced by the Australian Institute of Health and Welfare (AIHW).

The social and political context within which welfare services are delivered have evolved considerably since the first edition of *Australia's welfare* was published in 1993.

In the policy arena, a number of intergovernmental agreements have been finalised in recent years that more clearly identify government responsibility for funding and providing services across the welfare sector and increasingly measuring outcomes.

This is also a time of active consideration of future reforms in the welfare sector, with recent major inquiries and ongoing community discussion about the future structure of aged care services, support for people with disability, and closing the gap on Indigenous disadvantage. Among the cross-sectoral themes raised in these areas are a focus on person-centred service delivery, integration between services—both mainstream and specialised—and the increasing role of the non-government sector.

Australia's welfare 2011 contributes to this discussion by bringing together the high-quality national statistics that form much of the evidence base for contemporary policy development. By providing an overview of the welfare sector in all its diversity, this report also highlights a number of important themes that transcend any individual component. These include the recognition that population ageing influences demand for welfare services beyond the scope of aged care; that the way we engage in education and work affects our need for government services and our capacity to provide informal care; and that while most Australians enjoy a high standard of living, disparities between population groups continue to exist.

Sound data underpins robust policy development, as well as playing a key role in monitoring progress towards nationally agreed targets. This is core to the AIHW's mission:

Authoritative information and statistics to promote better health and wellbeing.

This tenth edition of *Australia's welfare* has a modified structure and expanded content compared to previous years. The report is divided into distinct sections that present statistics on population factors underpinning demand for welfare services; details of the particular needs and assistance provided to key groups; and information about the resourcing of welfare services in Australia. Finally, it ends with updated indicators of Australia's welfare, last reported by the AIHW in *Australia's welfare 2007*. These measures provide an overview of the wellbeing of Australians across domains of healthy living, autonomy and participation, and social cohesion.

This report also includes a summary of major recent or upcoming data developments that will improve the coverage, timeliness and comparability of information, which should improve our understanding of the need for welfare services, the way in which services are delivered, and outcomes achieved from the range of welfare services.

In keeping with the contemporary information environment, and to make the AIHW's work available to new audiences, this report is, for the first time, accompanied by *Australia's welfare in brief*—a booklet and companion website that presents highlights from the main report.

David Kalisch

Director

Acknowledgments

Steering committee

David Kalisch, Brent Diverty, Teresa Dickinson, Fadwa Al-Yaman, Alison Verhoeven and Louise O'Rance

Chapter authors

Chapters 1–3: Louise O'Rance

Chapter 4: Jenna Pickles, Nicole Hunter and Tim Beard

Chapter 5: Merryl Uebel-Yan, Xingyan Wen, Louise O'Rance

Chapter 6: Tracy Dixon

Chapter 7: Merryl Uebel-Yan, Xingyan Wen

Chapter 8: Rachael Kitchens, Felicity Murdoch, Jason Thomson

Chapter 9: Tessica Dall, Jacinta Henry

Chapter 10: Janice Miller, Scott Sims, Stephen Dent, David Braddock

Chapter 11: Laura Pritchard, Barbara Gray, Gail Brien

Chapter 12: Charity Liaw, Louise O'Rance

Many other staff from AIHW and its collaborating units contributed time and expertise to the production of *Australia's welfare 2011*. Their efforts are also gratefully acknowledged.

External contributors and referees

The following individuals and organisations provided information, advice and comments on various chapters of *Australia's welfare 2011*. Their constructive input added to the quality and authority of the publication, and is gratefully acknowledged.

Ken Baker	Julie Byles	Judy Cashmore
Chris Chamberlain	Ben Edwards	David Filby
Sarah Fogg	Hellene Gronda	Alan Hayes
Joshua Healy	Bill Martin	Trevor Parmenter
Peter Saunders	Mary Sayers	David Stanton
Judy Yates		

AIHW's Welfare Expenditure Advisory Committee (WEAC)

The Australian Government Department of Families, Housing, Community Services and Indigenous Affairs; Department of Employment, Education and Workplace Relations; Department of Health and Ageing; Australian Bureau of Statistics; Centrelink; and Department of Veterans' Affairs.

Symbols

\$	Australian dollars, unless otherwise specified
%	per cent
'000	thousands
n.a.	when used in a table: not available
n.e.c.	when used in a table: not elsewhere classified
n.e.s.	when used in a table: not elsewhere stated
n.p.	when used in a table: not published by the data source
..	when used in a table: not applicable
—	when used in a table: nil (including null cells)
*	when next to a numerical value in a table: estimate has a relative standard error of 25% to 50% and should be used with caution
**	when next to a numerical value in a table: estimate has a relative standard error greater than 50% and is considered too unreliable for general use