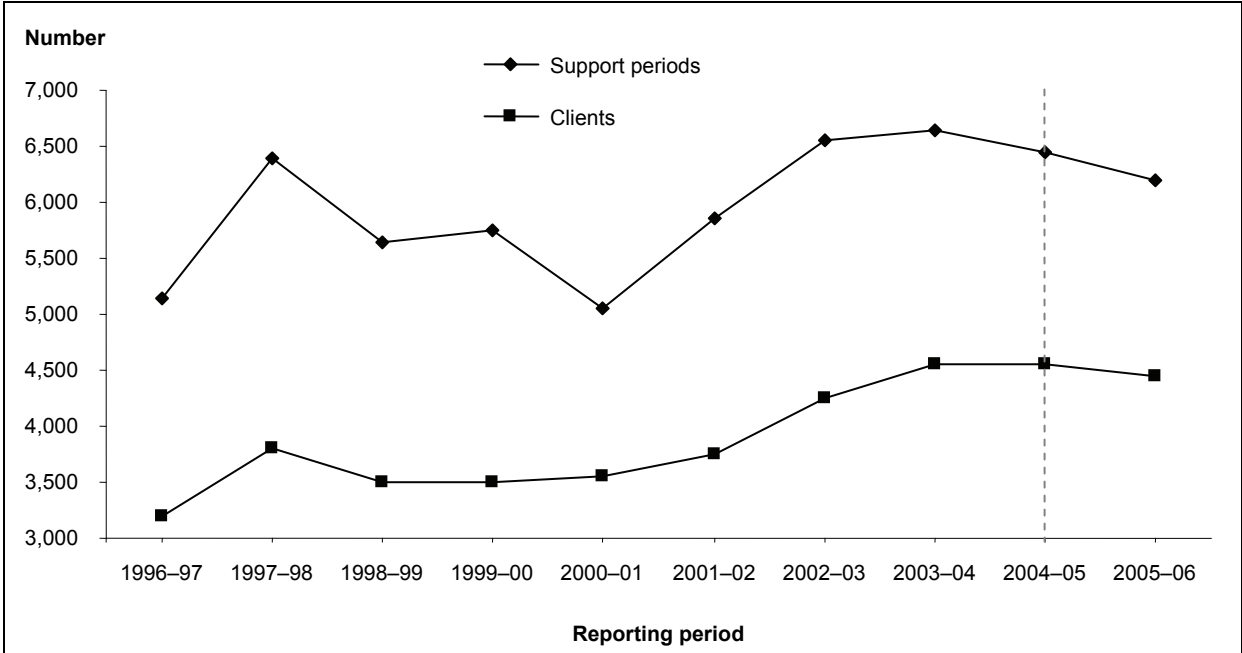


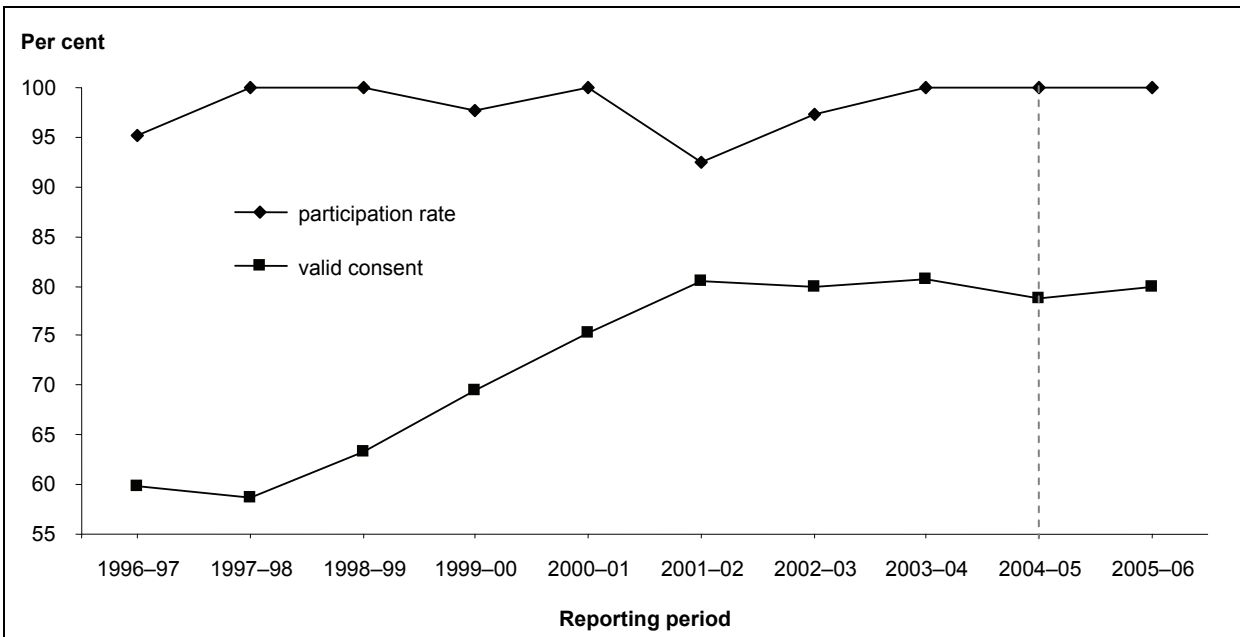
9 Support from 1996–97 to 2005–06

9.1 Key charts



Source: Table 9.2.

Figure 9.1: Number of SAAP support periods and clients, by reporting period, Tasmania, 1996-97 to 2005-06



Source: Table 9.4.

Figure 9.2: Agency participation rate and valid consent, by reporting period, Tasmania, 1996-97 to 2005-06 (per cent)

9.2 Tables

Table 9.1: SAAP funding to agencies and mean funding per support period and client: current and constant 2005–06 dollars, by reporting period, Tasmania, 1996–97 to 2005–06

Reporting period	Total recurrent funding ^(a)	Funding to agencies ^(a)	Funding per support period ^(b)	Funding per client ^(b)
Current \$				
1996–97	9,666,000	8,990,000	1,740	2,810
1997–98	9,839,000	9,156,000	1,430	2,400
1998–99	10,065,000	9,382,000	1,660	2,680
1999–00	10,375,000	9,518,000	1,650	2,700
2000–01	11,229,000	9,693,000	1,920	2,740
2001–02	11,554,000	11,139,000	1,910	2,980
2002–03	11,920,000	11,366,000	1,730	2,670
2003–04	12,194,000	11,657,000	1,750	2,560
2004–05	12,937,000	12,442,000	1,930	2,730
2005–06	13,802,000	13,194,000	2,120	2,980
Constant 2005–06 \$				
1996–97	13,962,000	12,985,000	2,520	4,060
1997–98	13,489,000	12,553,000	1,960	3,300
1998–99	13,502,000	12,585,000	2,230	3,590
1999–00	13,815,000	12,674,000	2,200	3,600
2000–01	14,151,000	12,215,000	2,420	3,460
2001–02	14,922,000	14,386,000	2,460	3,850
2002–03	14,631,000	13,951,000	2,120	3,270
2003–04	13,670,000	13,068,000	1,970	2,870
2004–05	13,913,000	13,380,000	2,080	2,930
2005–06	13,802,000	13,194,000	2,120	2,980

(a) 'Total recurrent funding' and 'Funding to agencies' for 1999–00 and 2000–01 includes relatively small amounts provided through the Partnerships Against Domestic Violence Program (AIHW 2001a:Table 2.1; AIHW 2001b:Table 2.1). Total recurrent funding' and 'Funding to agencies' for 2004–05 includes state-only recurrent allocations which are in addition to the SAAP agreement between this government and the Australian Government (see AIHW 2006:Table 2.1).

(b) 'Funding per support period' and 'Funding per client' are based on recurrent allocations to agencies.

Notes

1. In 2005–06 the definition of a support period, the definition of a client and the statistical linkage key were changed. Data using these are therefore not comparable to previous years.
2. Support period figures have been weighted to adjust for agency non-participation.
3. Client figures have been weighted to adjust for agency non-participation and client non-consent.

Sources: SAAP Administrative Data and Client Collections; AIHW 1997, 1999, 2000, 2001a, 2001b, 2002, 2003, 2005, 2006; ABS 2006b; FaCSIA unpublished data.

Table 9.2: SAAP support periods and clients, by reporting period, Tasmania, 1996–97 to 2005–06 (number)

	1996–97	1997–98	1998–99	1999–00	2000–01	2001–02	2002–03	2003–04	2004–05	2005–06
Support periods	5,150	6,400	5,650	5,750	5,050	5,850	6,550	6,650	6,450	6,200
<i>Errors & omissions</i>	—	—	—	—	—	—	—	—	—	—
Clients	3,200	3,800	3,500	3,500	3,550	3,750	4,250	4,550	4,550	4,450
<i>Errors & omissions</i>	—	—	—	—	—	—	—	—	—	—
Nightly average support periods with accommodation	150	250	200	200	200	200	150	150	200	250
<i>Errors & omissions</i>	99	167	276	158	69	106	76	91	79	63
Daily average support periods	450	650	550	650	700	850	1,000	1,050	1,150	1,000
<i>Errors & omissions</i>	233	162	19	9	57	86	6	1	—	—

Notes

1. In 2005–06 the definition of a support period, the definition of a client and the statistical linkage key were changed. Data using these are therefore not comparable to previous years.
2. Numbers of clients in this table relate to clients who ever received assistance from a SAAP agency in Tasmania.
3. Support period figures have been weighted to adjust for agency non-participation.
4. Client figures have been weighted to adjust for agency non-participation and client non-consent.

Source: SAAP Client Collection.

Table 9.3: SAAP accompanying child support periods and accompanying children by reporting period, Tasmania, 2001–02 to 2005–06 (number)

	2001–02	2002–03	2003–04	2004–05	2005–06
Accompanying child support periods	2,350	2,950	2,750	3,200	2,950
<i>Errors & omissions</i>	—	—	—	—	—
Accompanying children	1,900	2,300	2,350	2,650	2,150
<i>Errors & omissions</i>	—	—	—	—	—
Nightly average accompanying child support periods with accommodation	100	100	100	100	150
<i>Errors & omissions</i>	94	36	36	46	33
Daily average accompanying child support periods	400	550	500	600	550
<i>Errors & omissions</i>	71	8	1	—	—

Notes

1. In 2005–06 the definition of an accompanying child support period, the definition of an accompanying child and the statistical linkage key were changed. Data using these are therefore not comparable to previous years.
2. Dates of support and accommodation are not collected for accompanying children. For the purposes of calculating the number of days of support and the number of nights of accommodation, accompanying children are assumed to have the same periods of support and accommodation as their parent(s) or guardian(s).
3. Numbers of accompanying children in this table relate to children who ever accompanied a client to a SAAP agency in Tasmania.
4. Accompanying child support period figures have been weighted to adjust for agency non-participation.
5. Accompanying children figures have been weighted to adjust for agency non-participation and client non-consent.

Source: SAAP Client Collection.

Table 9.4: SAAP Client Collection: agency participation rates and forms returned with informed consent and valid consent by reporting period, Tasmania, 1996–97 to 2005–06

	1996–97	1997–98	1998–99	1999–00	2000–01	2001–02	2002–03	2003–04	2004–05	2005–06
Agencies ^(a) (number)	42	40	41	41	39	40	36	35	34	34
Agency participation rate (%)	95.2	100.0	100.0	97.6	100.0	92.5	97.2	100.0	100.0	100.0
Forms returned (number)	4,895	6,063	5,643	5,634	5,051	5,045	6,383	6,644	6,440	6,215
Forms returned with consent (%)	64.1	62.5	66.1	71.3	76.2	81.9	81.6	81.7	80.3	84.7
Forms returned with valid consent ^(b) (%)	59.8	58.6	63.4	69.5	75.2	80.4	80.0	80.6	78.8	79.9

(a) 'Agencies' refers to the number of agencies that were 'in scope'—that is, that should have been participating in the reference period.

(b) 'Valid consent' here refers to forms with a valid statistical linkage key (see 'statistical linkage key' in the Glossary and AIHW 2006:Glossary). Note that in 2005–06 the statistical linkage key was changed and therefore data using this is not comparable to previous years.

Note: Table based on forms returned from agencies in scope for the Client Collection during the reference period. Not all agencies funded under SAAP are required to participate in the Client Collection. For example, agencies that provide only support to other agencies or casual assistance lasting less than 1 hour on a given day and which is not of an ongoing nature are not required to participate in the collection. Consequently, some agencies funded under SAAP (see Chapter 2) are not included in this table.

Sources: SAAP Administrative Data and Client Collections.

