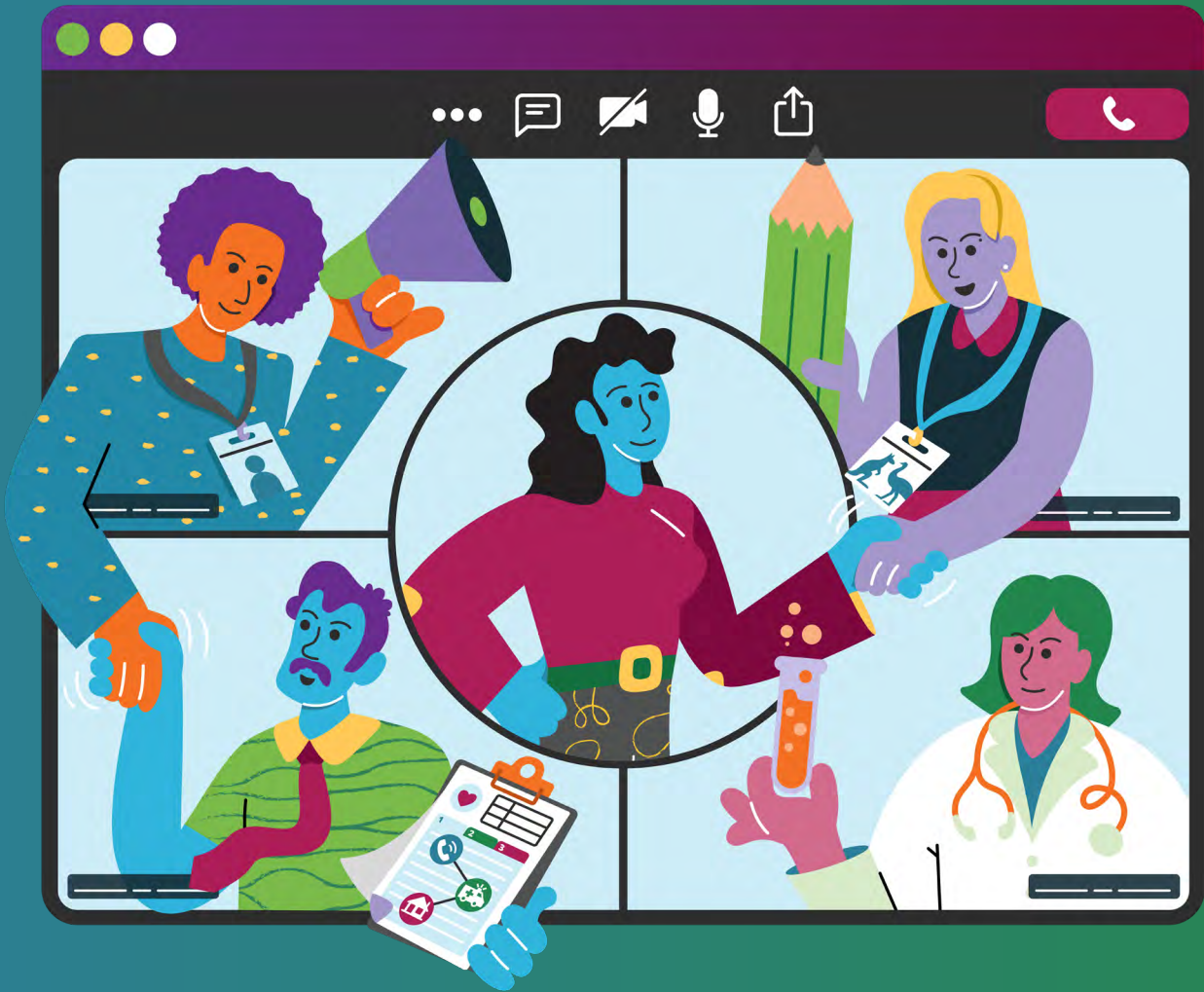




Australian Government  
Australian Institute of  
Health and Welfare

AIHW



# Appendix M

Acknowledgments and stakeholders consulted

# Acknowledgements

The AIHW extends thanks to:

- All individuals and organisations (more than 200 external, and over 50 internal AIHW colleagues) who have engaged with the SRH Unit of the AIHW in relation to this work to date, including participation in the NMEAG, consultation workshops and bilateral meetings, for their invaluable contribution towards shaping the framework and strategy (see Stakeholders consulted, below).
- Reviewers who have provided feedback on a draft version prior to public consultation, in alphabetical order: Nicky Bath, Gita Mishra, Skye McGregor, Carolyn Mogharbel and James Ward.
- Boxing Clever for their work in preparing a stakeholder engagement strategy, designing and co-facilitating the consultation workshops.

## Authorship

This report has been authored by the AIHW Sexual and Reproductive Health Unit, including in alphabetical order: Shivali Amin, Cathy Claydon, Deanna Eldridge, Susan Manners, Brooke Petzke, Lucy Stackpool-Moore, Nellie Thomson and Kari Vallury. Contributions by Adrian Webster and Geoff Callaghan are gratefully acknowledged.

## Funding

This report was funded by the Australian Government Department of Health, Disability and Ageing.

## Stakeholders consulted

The AIHW gratefully acknowledges the input and feedback from the following individuals:

- Jason Abbott (Discipline of Women's Health, UNSW Sydney)
- Kath Albury (ARC Centre of Excellence for Automated Decision-Making and Society, Swinburne University of Technology)
- Delaram Ansari (Multicultural Centre for Women's Health)
- Jodie Avery (Robinson Research Institute, University of Adelaide)
- Catherine Bateman (Latrobe Community Health Service)
- Nicky Bath (LGBTIQ+ Health Australia)
- Janeen Baxter (ARC Centre of Excellence for Children and Families over the Life Course, The University of Queensland)
- Jade Bilardi (Miscarriage Australia)

- Julie Borninkhof (PANDA (Perinatal Anxiety & Depression Australia))
- Jessica Botfield (SPHERE Centre of Research Excellence; Department of General Practice, Monash University)
- Georgina M Chambers (National Perinatal Epidemiology and Statistics Unit, UNSW Sydney)
- Ka-Kiu Cheung (Royal Australian College of General Practitioners (RACGP): Specific Interest Group for Antenatal Postnatal Care)
- Natasha Chong (Cairns Sexual Health Service)
- Donna Ciccio (Endometriosis Australia)
- Hayley Clapham (Autism CRC)
- Theresa Clasquin (Molly Wardaguga Institute for First Nations Birth Rights)
- Soazig Clifton (British National Survey of Sexual Attitudes and Lifestyles (Natsal) team, Institute for Global Health, University College London)
- Jacqueline Coombe (Melbourne School of Population and Global Health, The University of Melbourne)
- Bonney Corbin (MSI Reproductive Choices; Australian Women's Health Alliance)
- Alison Creagh (Sexual Health Quarters)
- Fabricio da Silva Costa (Maternal Fetal Medicine Unit, Gold Coast University Hospital; School of Medicine and Dentistry, Griffith University; Stillbirth Centre of Research Excellence)
- Susan Davis (Women's Health Research Program, School of Public Health and Preventive Medicine, Monash University)
- Judith Dean (Poche Centre for Indigenous Health, The University of Queensland)
- Kristina Edvardsson (School of Nursing and Midwifery, La Trobe University)
- Julia Feutrill (Women and Newborn Health Service)
- Kate Finch (Health Justice Australia)
- Fiona (Advocate)
- Emmalee Ford (Family Planning Australia; Sexual and Reproductive Health Australia)
- Nicole Freeman (Australian College of Midwives; Women's and Newborn's Health Service, Western Australia; School of Nursing-Midwifery, Curtin University)
- Bronwyn Graham (Centre for Sex and Gender Equity in Health and Medicine, George Institute for Global Health Australia; UNSW Sydney)
- Luke Grzeskowiak (Flinders Health and Medical Research Institute, Flinders University)
- Hayley Guiney (Jean Hailes for Women's Health)
- Rebecca Guy (Kirby Institute, UNSW Sydney)

- Bridget Haire (School of Population Health, Kirby Institute and Australian Human Rights Institute, UNSW Sydney)
- Jonathan Hallett (Collaboration for Evidence, Research and Impact in Public Health, School of Population Health, Curtin University)
- Sarah Harwood (Sexual Health Victoria)
- Jacqueline Hendriks (Discipline of Health Promotion and Sexology, School of Population Health, Curtin University)
- Martha Hickey (The University of Melbourne; Women's Hospital Victoria)
- Dawn Hudd (Chief Nursing and Midwifery Office, Department of Health, Western Australia)
- Melanie Keep (Sydney School of Health Sciences, The University of Sydney: Early Pregnancy Loss Coalition)
- Daile Kelleher (Sexual and Reproductive Health Australia)
- Anne-Marie Kelly (Centre for Excellence in Rural Sexual Health, The University of Melbourne)
- Louise Keogh (Melbourne School of Population and Global Health, The University of Melbourne)
- Alan Lam (Centre for Advanced Reproductive Endosurgery (CARE); Northern Clinical School, University of Sydney; RANZCOG)
- Francisco Lopez (ACON)
- Michelle Marsh (Women and Children's Division, Lyell McEwin Hospital, Northern Adelaide Local Health Network)
- Rachel Matthews (Health Networks Directorate, Department of Health, Western Australia)
- Erin McBride (Queensland Health)
- Skye McGregor (Kirby Institute, UNSW Sydney)
- Catriona Melville (Royal Australian and New Zealand College of Obstetricians and Gynaecologists (RANZCOG))
- Martina Mende (RANZCOG)
- Jessica Michaels (ASHM Health)
- Gita Mishra (Australian Women and Girls' Health Research Centre, The University of Queensland)
- Carolyn Mogharbel (1800 My Options; Women's Health Victoria)
- Erin Morton (Bespoke Clinical Research)
- Meredith O'Connor (Melbourne Children's LifeCourse Platform, Murdoch Children's Research Institute)
- Isabelle Oderberg (Early Pregnancy Loss Coalition)
- Samantha Payne (Pink Elephants Support Network)

- Diana Piantedosi (Women With Disabilities Australia)
- Mish Pony (Scarlet Alliance)
- Renee Rankin (Pelvic Pain Foundation of Australia)
- Sam Read (Sexual Health Victoria)
- Rachel Reid (Rainbow Families Australia)
- Mridula Shankar (Gender and Women's Health Unit, Nossal Institute for Global Health, The University of Melbourne)
- Magdalena Simonis (RACGP)
- Sarah Skalecki (Royal Brisbane and Women's Hospital; RANZCOG)
- Kelly Stegmeyer (Northern Adelaide Local Health Network)
- Skye Stewart (CATSINaM (Congress of Aboriginal and Torres Strait Islander Nurses and Midwives))
- Jess Taylor (QENDO; Endometriosis Coalition)
- Helena Teede (Monash Centre for Health Research and Implementation, Monash University)
- Olivia Tierney (Chief Nursing and Midwifery Officer Division, Australian Government Department of Health, Disability and Ageing)
- Claire Vajdic (Kirby Institute, UNSW Sydney)
- Catherine Vallence (Involuntary Childlessness through Treatment Loss or Circumstance)
- Amanda Vincent (Monash Centre for Health Research and Implementation, Monash University)
- Beverley Vollenhoven (Department of Obstetrics and Gynaecology, Monash University; Gynaecology and Research, Monash Health)
- Madeleine Walker (Pelvic Pain Foundation of Australia)
- James Ward (Poche Centre for Indigenous Health, The University of Queensland)
- Lucy Watson (ACON)
- Juliet Watson (Social Equity Research Centre, RMIT University; Pregnancy and Homelessness Coalition)
- Ash Webb (QENDO)
- Sara Whitburn (Sexual Health Victoria; RACGP Sexual Health Medicine Special Interest Group)
- Sarah L White (Jean Hailes for Women's Health)
- Sethini Wickramasinghe (Global and Women's Health Unit, Monash University)

- Louise Wilson (Australian Women and Girls' Health Research Centre, The University of Queensland)
- Kellie Wilton (Chief Nursing and Midwifery Office, Northern Territory Health)
- Arthur Ka Chun Wong (Sexual Health and Bloodborne Viruses Services, South Eastern Sydney Local Health District; Kirby Institute, UNSW Sydney)

The AIHW is also grateful to the following organisations for their input and feedback:

- Aunty Jane
- Australian Government Department of Health, Disability and Ageing
- Australian Women and Girls' Health Research Centre, The University of Queensland
- Family Planning Australia
- Health Justice Australia
- MSI Australia MSI Reproductive Choices
- RANZCOG
- Sexual and Reproductive Health Australia
- SHARE (Sexual Health Advocates for Reproductive Equity)
- Sexual Health Quarters
- SHINE SA
- Specialty of Child and Adolescent Health, The University of Sydney
- The Social Policy Group
- WellFemme Telehealth Menopause Clinic
- Women's Health Matters (ACT)



TO LEARN MORE  
**click here**

## See the full report

Sexual and Reproductive Health  
Monitoring Framework and Data Strategy



**Australian Government**  
**Australian Institute of  
Health and Welfare**

**A I H W**

