

## What is the National Health Data Hub?

The National Health Data Hub (NHDH or the Hub) is a national data linkage system of de-identified data. The NHDH draws together core government administrative health, welfare, disability, aged care and related data sets and is a valuable resource in the Australian linked data landscape.

The NHDH is available for government and non-government researchers to undertake analyses for health and welfare statistical and research purposes. It can be used to support policy development, service delivery and community benefits.

### NHDH Guiding principles

The NHDH has been built on the following guiding principles:

- Privacy by design – embedding privacy protections at all stages of the NHDH design and operation
- Minimise the need to share and use personal information
- Link once and use many times approach
- Employ efficient methodologies and processes.

## The power of using linked data

*Describing priority population service use*  
**Health service use among young people hospitalised due to family and domestic violence (FDV)**

Lead agency: AIHW

This project explored the demographic profile of people with an FDV related hospital stay, as well as the characteristics of their hospital experiences, including visits to the emergency department, and any subsequent deaths.



*Informing service delivery and community benefit*  
**Inquiry into palliative care in South Australia**

Lead agency: South Australian Health Performance Council

This project investigated retrospective health service usage for palliative care related patient care in South Australia in public hospitals. The NHDH was used to fill a gap in evidence for this critical population and helped to assess potential future demand on the health system.



*Understanding pathways through the health system*  
**Treatment pathways for people hospitalised for acute coronary syndrome (ACS)**

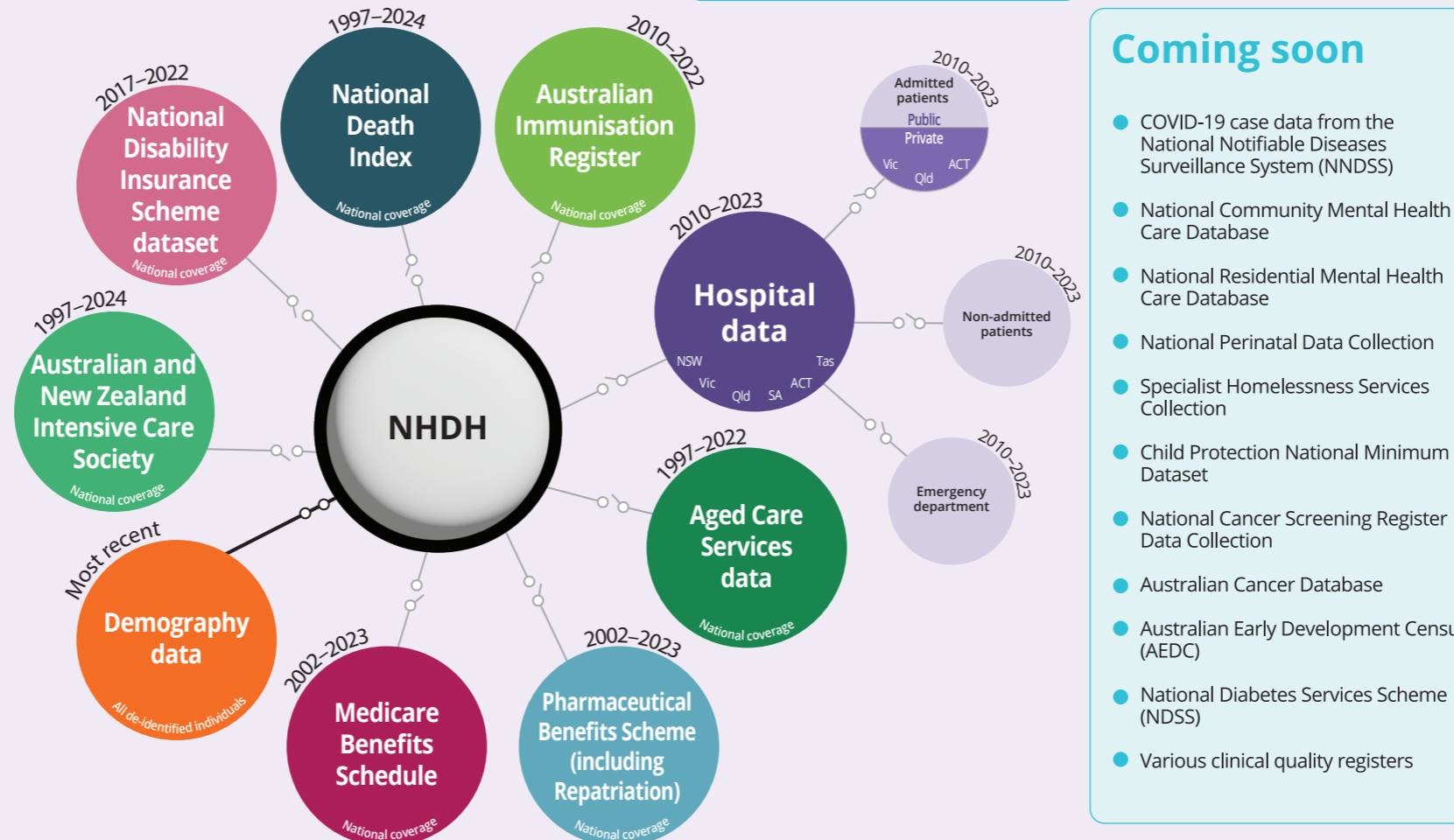
Lead agency: AIHW

This project used the NHDH to map 'what happened next' for 35,800 people who survived an ACS hospitalisation and describes the health outcomes they experienced. Measures of interventional procedures and medication were used to describe a person's 'treatment pathway'.



### Data in the NHDH

The NHDH comprises de-identified, longitudinal, linked data from state and territory, and Commonwealth data sources.



### Coming soon

- COVID-19 case data from the National Notifiable Diseases Surveillance System (NNDSS)
- National Community Mental Health Care Database
- National Residential Mental Health Care Database
- National Perinatal Data Collection
- Specialist Homelessness Services Collection
- Child Protection National Minimum Dataset
- National Cancer Screening Register Data Collection
- Australian Cancer Database
- Australian Early Development Census (AEDC)
- National Diabetes Services Scheme (NDSS)
- Various clinical quality registers

## NHDH statistics

The NHDH supports a wide range of projects delivering public benefit through the value of linked data. As at March 2025, there were:

- 42** Active NHDH and NHDH + n projects
- 44** NHDH and NHDH + n projects in approval pipeline
- 5** Completed NHDH projects (2024-2025 financial year to date)
- 17** Requests approved by data providers for publications arising from NHDH projects (2024-2025 financial year to date)

The AIHW also supports customised data linkage projects. Increasingly, demand for these projects are being supported by the NHDH. As at March 2025, AIHW were supporting:

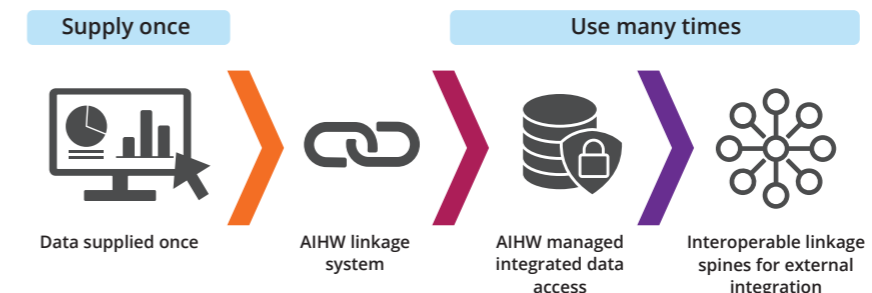
- 99** Active customised data linkage projects in the Secure Unified Research Environment (SURE)
- 93** Customised data linkage projects in approval pipeline

## Using the NHDH

Researchers wishing to access the NHDH must ensure their research project falls under the approved uses for the NHDH. Access to the NHDH is available through standard access and by linking additional datasets to NHDH for analysis purposes, referred to as the NHDH + n process.

NHDH project proposals are assessed against the NHDH Governance Protocols by the AIHW's NHDH data custodian, the AIHW Ethics Secretary and the NHDH Advisory Committee. Access to the NHDH is via the Secure Environment for Analysing Data (SEAD).

### The AIHW's data flow concept



For further information:  
NHDH@aihw.gov.au  
www.aihw.gov.au/nhdh