

Specialist homelessness services:
**On any given day, across
Tasmania**



2022

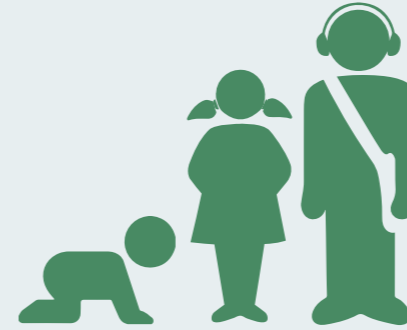


61 specialist
homelessness services (SHS)
agencies **were**
supporting **over**
2,300 clients



490
of these clients
were **young people**
presenting **alone**^(a)

&



250
were **children in**
families that were
being supported



6 clients
received **support for**
the **first time ever**
from a SHS agency^(b)



310
clients **spent the night**
sleeping in **crisis**
accommodation^(c)



445
clients **report having**
slept **rough in the**
last month^(d)

42

requests
for assistance were
unable to be met



agencies closed
12 cases^(e)
with **58%** having
stable housing outcomes^(f)

(a) Young people presenting alone are aged 15–24. Children are aged 0–17. In this infographic, these groups are mutually exclusive.

(b) Clients who had not previously received SHS support since the collection began in 2011–12.

(c) Crisis accommodation refers to short-term or emergency accommodation, and may include hotels, motels and caravan parks.

(d) Clients who said they were 'Sleeping rough or in non-conventional accommodation' in the last month (previously homeless).

(e) Clients who had a valid 'homelessness last reported' status.

(f) Only includes cases where housing status at the end of support was known.