



# Installing Software for remote access on a Windows 10 Device

The Axon and Salt remote access solution provides AIHW staff the ability to work remotely using personal laptops and desktop computers.

## Key Terms

- **RSA SecurID Software Token:** Used for two factor authentication for use of work remotely. Your **SecurID** is your **Custom PIN** followed by your 6 digit **Token Code**.
- **AIHW's Axon:** VPN used to form an authorized encrypted secure tunnel between the client devices to AIHW.
- **VMWare Horizon:** Creates a temporary virtual desktop similar to AIHW's internal desktop experience.

The **install** process is only required the first time you use remote access.

## Contents

Installing Software for remote access on a Windows 10 Device .....	1
Key Terms.....	1
Download software.....	1
Installing the F5 BIG-IP Edge Client.....	2
Installing VMWare Horizon.....	4

## Download software

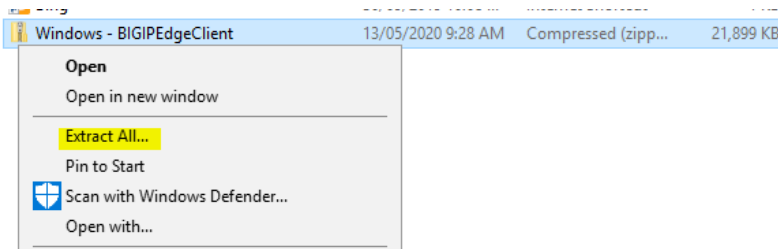
Guides and software for Remote Access are stored on <https://www.aihw.gov.au/remote> download the *Big-IP Edge Client* and the *VMWare Horizon Client* located under the Windows heading to your computer.

# Installing the F5 BIG-IP Edge Client

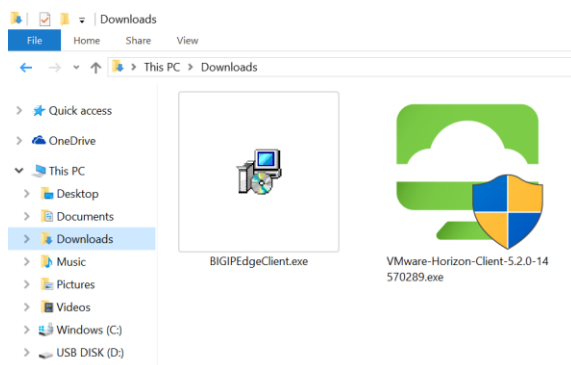
## Step 1

Open the location you downloaded the **Windows - BIG-IP Edge Client.zip** to (by default, this will be in your Downloads folder) and right click and select **Extract All** to unzip the file. If you have an extraction tool such as WINRAR/PeaZIP/7ZIP you will see an extract option in their menu.

Please disregard the above, if the file saves as an **.exe** file.



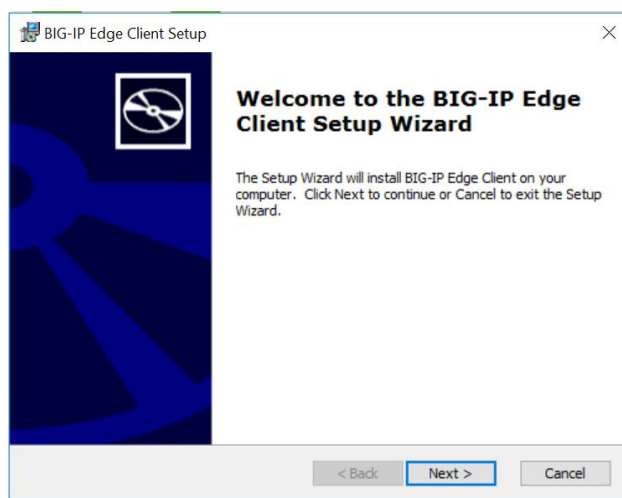
Once extracted, double click the **BIG-IP Edge Client.exe** file to launch the installation



**Note:** The application names for *BIG-IP Edge Client* and *VMWare Horizon* may differ depending on the version you have.

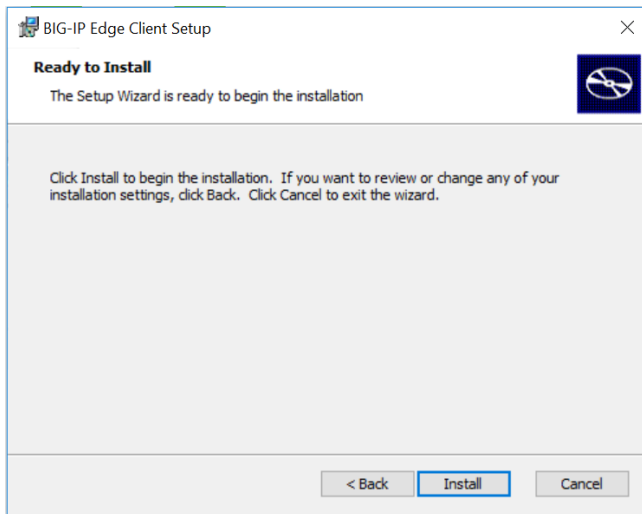
## Step 2

Click **Next** in the *BIG-IP Edge Client Setup Wizard* window to proceed.



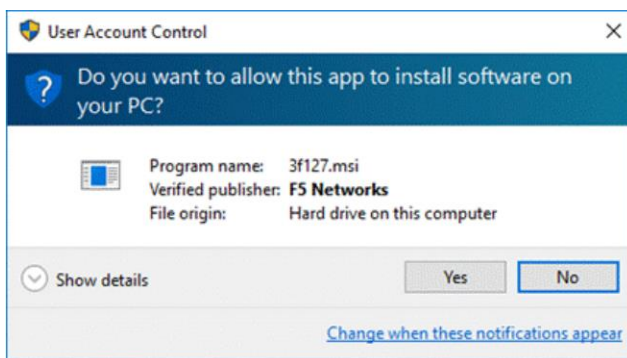
### Step 3

Click **Install** in the *Ready to Install* window to start installation



### Step 4

Click **Yes** to agree to the *User Account Control* message to proceed with the installation process.

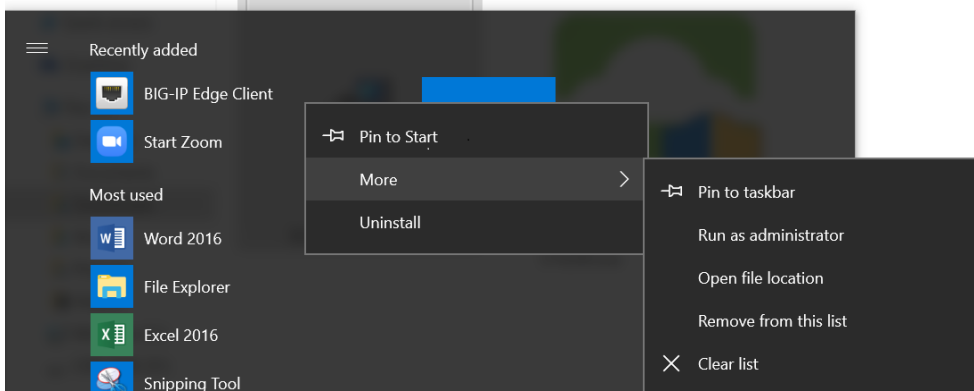


### Step 5

Click **Finish** in the *Completing the BIG-IP Edge Client Setup Wizard* window to finish the installation process and exit the Setup Wizard.

### Step 6 (Optional)

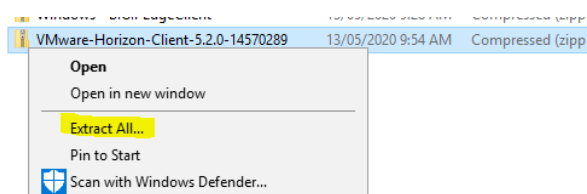
If you'd like to pin the application to your menus, search for BIG-IP (it may be at the top of Start under Recently Added) and select **Pin to Start** or **Pin to Taskbar**.



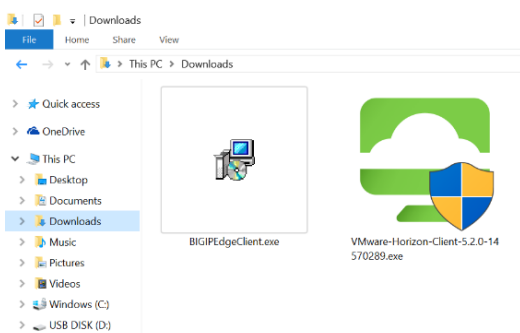
# Installing VMWare Horizon

## Step 1

Open the location you downloaded the **VMwareHorizonClient.zip** to (by default, this will be in your Downloads folder) and right click and select Extract All to unzip the file. If you have an extraction tool such as WINRAR/PeaZIP/7ZIP you will see an extract option in their menu.



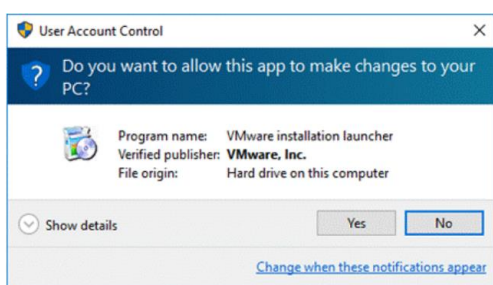
Once the file is extracted. Double click the **VMware-Horizon-Client.exe** file to launch the installation.



**Note:** The application names for the BIG-IP Edge Client and VMware Horizon client may differ depending on which iteration you have.

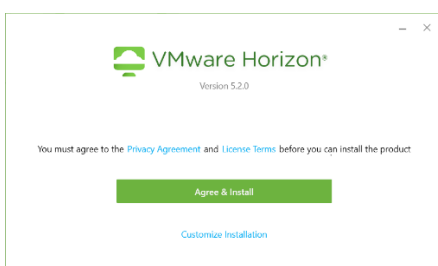
## Step 2

Click **Yes** to agree to the *User Account Control* message to proceed with installation.



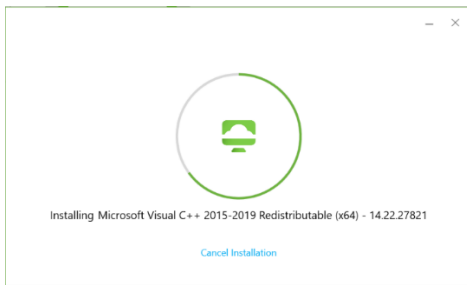
## Step 3

Click **Agree & Install** in the *VMware Horizon Client Setup* window to proceed.



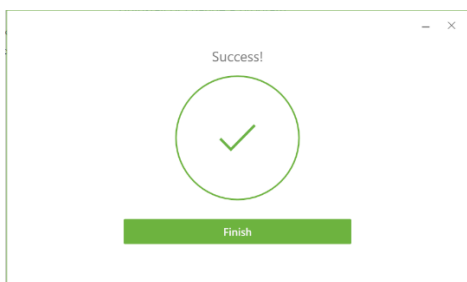
## Step 4

Wait while the client installs



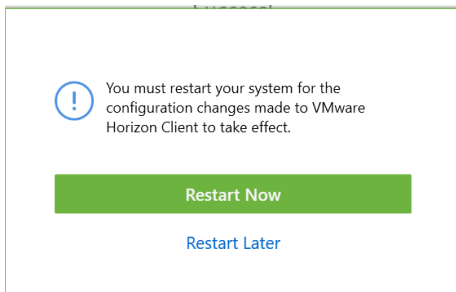
## Step 5

Click **Finish** in the *Completed the VMware Horizon Client Setup Wizard* to finish the installation process and exit the Setup Wizard.



## Step 6

Click **Restart Now** in the VMware Horizon Client Setup window to restart your system.



You can now login to the AIHW Network using remote access.

Please continue with the two guides on how to use the remote access system.

- [RSA SecurID Token Mobile Setup Guide](#)
- [Getting Started with remote access for Windows 10 Devices](#)

Guides and Software are located: <https://www.aihw.gov.au/remote>