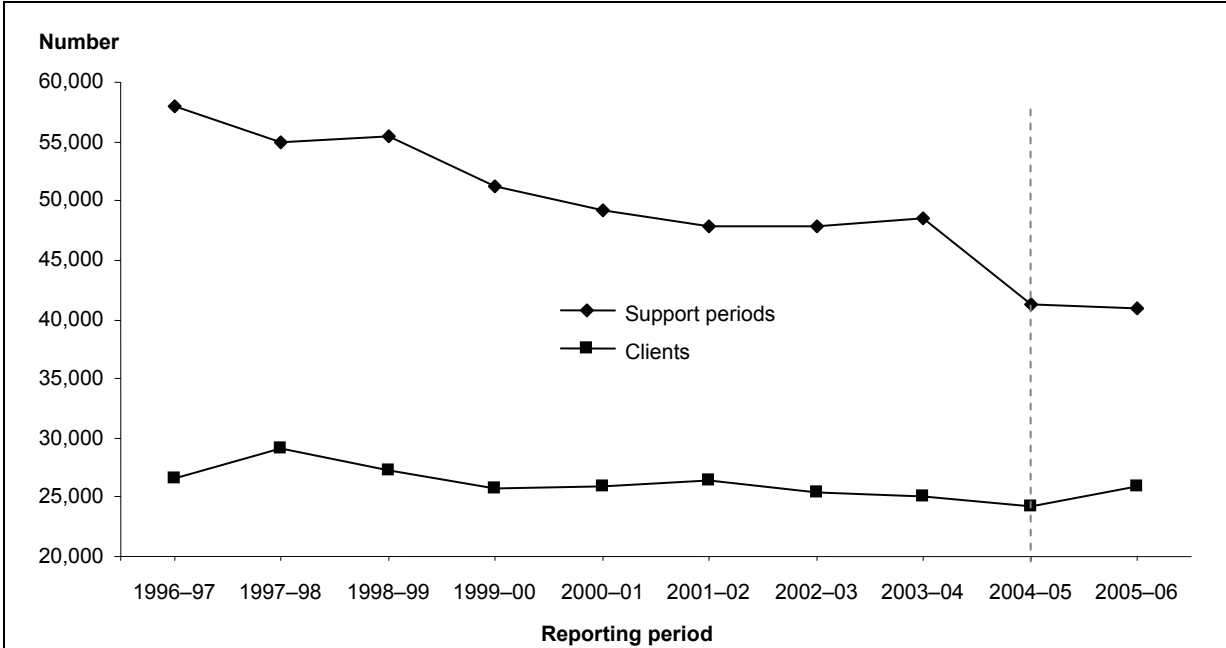


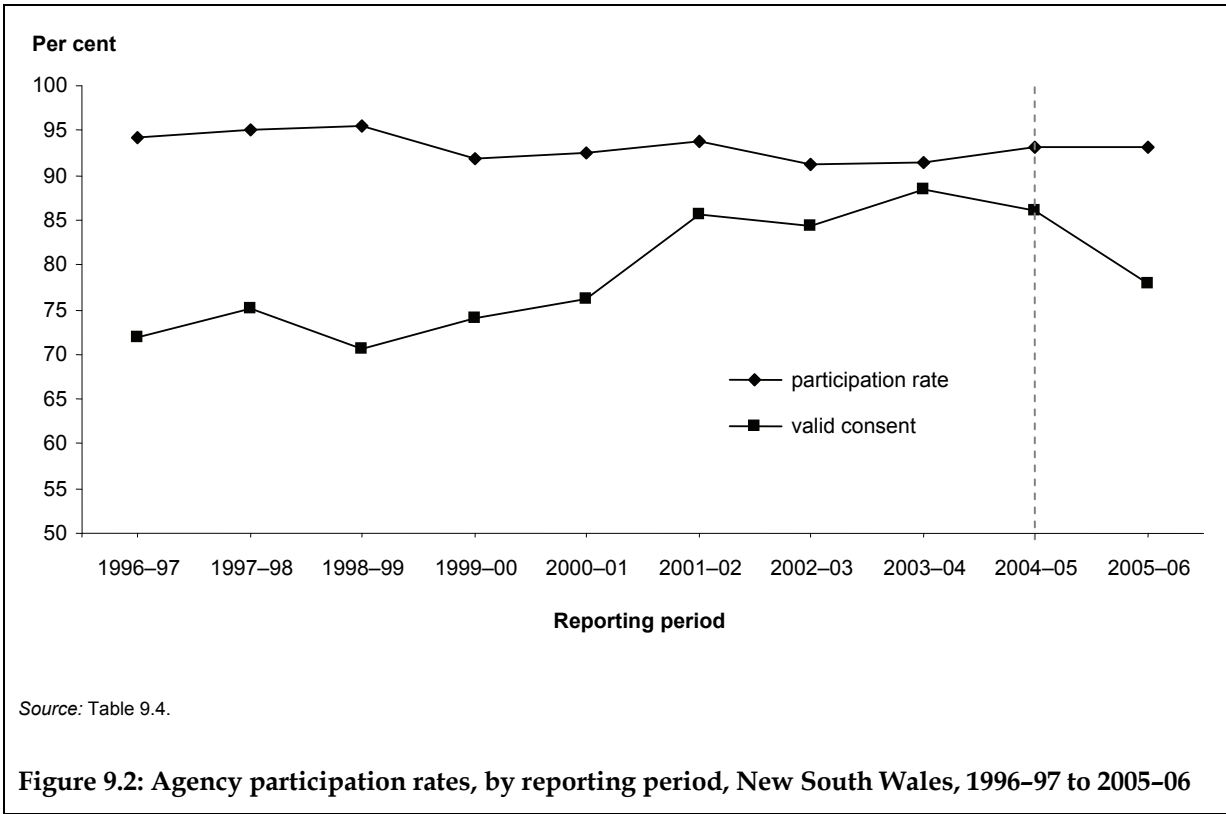
9 Support from 1996–97 to 2005–06

9.1 Key charts



Source: Table 9.2.

Figure 9.1: Number of SAAP support periods and clients, by reporting period, New South Wales, 1996-97 to 2005-06



9.2 Tables

Table 9.1: SAAP funding to agencies and mean funding per support period and client: current and constant 2005–06 dollars, by reporting period, New South Wales, 1996–97 to 2005–06

Reporting period	Total recurrent funding ^(a)	Funding to agencies ^(a)	Funding per support period ^(b)	Funding per client ^(b)
Current \$				
1996–97	80,112,000	72,679,000	1,250	2,730
1997–98	81,554,000	78,829,000	1,430	2,710
1998–99	81,528,000	78,320,000	1,410	2,870
1999–00	84,905,000	80,398,000	1,570	3,120
2000–01	91,853,000	84,561,000	1,720	3,270
2001–02	94,517,000	88,184,000	1,840	3,330
2002–03	108,381,000	102,739,000	2,140	4,040
2003–04	110,873,000	105,710,000	2,180	4,220
2004–05	113,090,000	107,308,000	2,600	4,450
2005–06	115,578,000	110,462,000	2,700	4,260
Constant 2005–06 \$				
1996–97	109,137,000	99,011,000	1,710	3,720
1997–98	111,331,000	107,611,000	1,960	3,700
1998–99	106,138,000	101,962,000	1,840	3,740
1999–00	106,404,000	100,755,000	1,970	3,900
2000–01	111,785,000	102,911,000	2,090	3,970
2001–02	112,614,000	105,069,000	2,190	3,970
2002–03	119,600,000	113,374,000	2,370	4,460
2003–04	122,113,000	116,426,000	2,400	4,650
2004–05	118,917,000	112,836,000	2,730	4,680
2005–06	115,578,000	110,462,000	2,700	4,260

(a) 'Total recurrent funding' and 'Funding to agencies' for 1999–00 and 2000–01 includes relatively small amounts provided through the Partnerships Against Domestic Violence Program (AIHW 2001a:Table 2.1; AIHW 2001b:Table 2.1).

(b) 'Funding per support period' and 'Funding per client' are based on recurrent allocations to agencies.

Notes

1. In 2005–06 the definition of support periods and clients, the statistical linkage key used and the weighting system were redeveloped. Data using these are therefore not comparable to previous years.
2. Support period figures have been weighted to adjust for agency non-participation.
3. Client figures have been weighted to adjust for agency non-participation and client non-consent.

Sources: SAAP Administrative Data and Client Collections; AIHW 1997, 1999, 2000, 2001a, 2001b, 2002, 2003, 2005, 2006; ABS 2006b; FaCSIA unpublished data.

Table 9.2: SAAP support periods and clients, by reporting period, New South Wales, 1996–97 to 2005–06 (number)

	1996–97	1997–98	1998–99	1999–00	2000–01	2001–02	2002–03	2003–04	2004–05	2005–06
Support periods	57,950	54,950	55,400	51,150	49,250	47,850	47,900	48,600	41,350	40,900
<i>Errors & omissions</i>	—	—	—	—	—	—	—	—	—	—
Clients	26,650	29,100	27,300	25,800	25,900	26,450	25,450	25,050	24,150	25,950
<i>Errors & omissions</i>	—	—	—	—	—	—	—	—	—	—
Nightly average support periods with accommodation	1,850	2,600	2,450	2,400	2,500	2,700	2,600	2,650	2,600	2,650
<i>Errors & omissions</i>	984	1,295	1,595	1,040	583	531	469	4,988	710	655
Daily average support periods	3,400	4,000	3,800	4,050	4,500	5,250	5,450	5,850	6,100	6,500
<i>Errors & omissions</i>	1,730	1,231	104	42	199	339	92	29	—	—

Notes

1. In 2005–06 the definition of a support period, the definition of a client and the statistical linkage key were changed. Data using these is therefore not comparable to previous years.
2. Numbers of clients in this table relate to clients who *ever* received assistance from a SAAP agency in New South Wales.
3. Support period figures have been weighted to adjust for agency non-participation.
4. Client figures have been weighted to adjust for agency non-participation and client non-consent.

Source: SAAP Client Collection.

Table 9.3: SAAP accompanying child support periods and accompanying children by reporting period, New South Wales, 2001–02 to 2005–06 (number)

	2001–02	2002–03	2003–04	2004–05	2005–06
Accompanying child support periods	13,500	12,950	12,850	13,500	15,900
<i>Errors & omissions</i>	—	—	—	—	—
Accompanying children	10,300	9,950	10,100	10,750	11,400
<i>Errors & omissions</i>	—	—	—	—	—
Nightly average accompanying child support periods with accommodation	1,150	1,150	1,200	1,250	1,300
<i>Errors & omissions</i>	295	298	333	291	286
Daily average accompanying child support periods	2,400	2,450	2,400	2,550	2,950
<i>Errors & omissions</i>	87	49	20	—	—

Notes

1. In 2005–06 the definition of an accompanying child support period, the definition of an accompanying child and the statistical linkage key were changed. Data using these are therefore not comparable to previous years.
2. Dates of support and accommodation are not collected for accompanying children. For the purposes of calculating the number of days of support and the number of nights of accommodation, accompanying children are assumed to have the same periods of support and accommodation as their parent(s) or guardian(s).
3. Numbers of accompanying children in this table relate to children who *ever* accompanied a client to a SAAP agency in New South Wales.
4. In 2001–02, 2002–03 and 2003–04, data that enabled the number of accompanying children to be estimated was not collected by agencies using the high-volume collection form. The reporting year 2004–05 was the first year that the number of accompanying children could be reported for all participating agencies.
5. Accompanying child support period figures have been weighted to adjust for agency non-participation.
6. Accompanying children figures have been weighted to adjust for agency non-participation and client non-consent.

Source: SAAP Client Collection.

Table 9.4: SAAP Client Collection: agency participation rates and forms returned with informed consent and valid consent by reporting period, New South Wales, 1996–97 to 2005–06

	1996–97	1997–98	1998–99	1999–00	2000–01	2001–02	2002–03	2003–04	2004–05	2005–06
Agencies ^(a) (number)	379	381	381	384	396	385	388	387	378	379
Agency participation rate (%)	94.2	95.0	95.5	91.9	92.4	93.8	91.2	91.5	93.1	93.1
Forms returned (number)	55,043	52,672	52,902	47,007	45,520	44,791	43,597	45,104	38,490	38,085
Forms returned with consent (%)	73.8	77.3	73.6	75.5	77.4	86.9	85.6	89.9	87.2	83.4
Forms returned with valid consent ^(b) (%)	71.8	75.2	70.5	74.0	76.1	85.6	84.4	88.4	86.0	78.0

(a) 'Agencies' refers to the number of agencies that were 'in scope'—that is, that should have been participating in the reference period.

(b) 'Valid consent' here refers to forms with a valid statistical linkage key (see 'statistical linkage key' in the Glossary and AIHW 2006:Glossary). Note that in 2005–06 the statistical linkage key was changed and therefore data using this is not comparable to previous years.

Note: Table based on forms returned from agencies in scope for the Client Collection during the reference period. Not all agencies funded under SAAP are required to participate in the Client Collection. For example, agencies that provide only support to other agencies or casual assistance lasting less than 1 hour on a given day and which is not of an ongoing nature are not required to participate in the collection. Consequently, some agencies funded under SAAP (see Chapter 2) are not included in this table.

Sources: SAAP Administrative Data and Client Collections.

