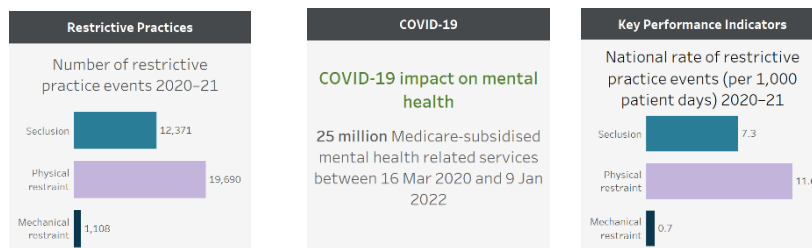


Mental health services in Australia describes the activity and characteristics of Australia's health care and social care services accessed by people with a mental illness.

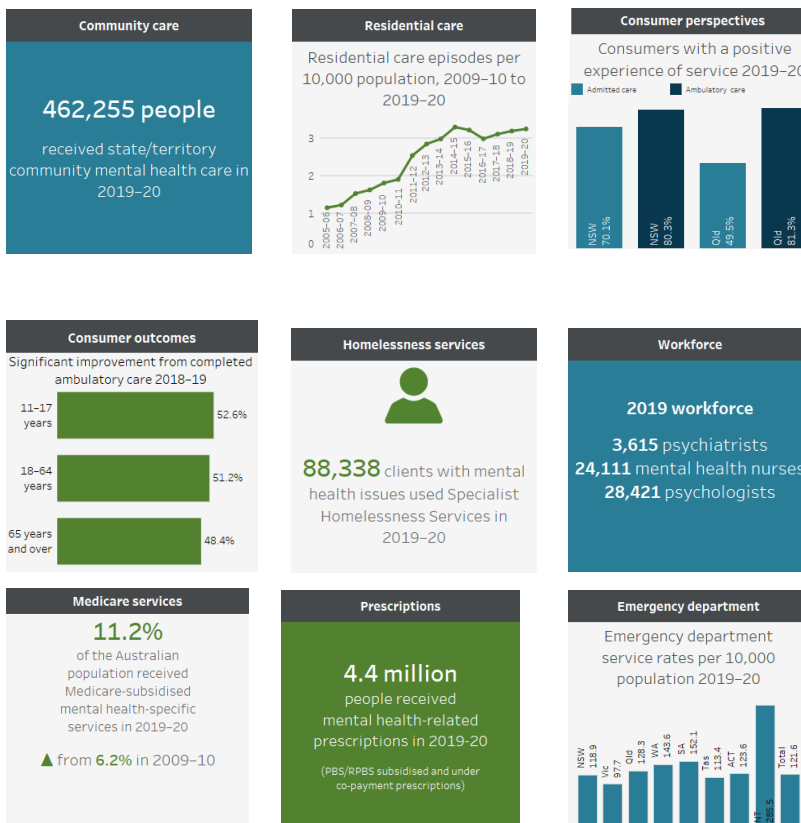
This web report provides the most recent data available on the national response of the health and welfare system to the mental health care needs of Australians. Data are progressively published as it becomes available throughout the year. As well as the information presented on the web pages, readers can find detailed data for current and previous years in the Microsoft® Excel workbooks downloadable from each section.

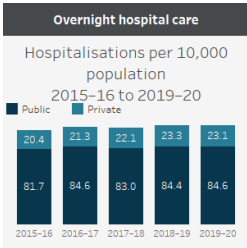
Please note the information in this report is constrained by the availability of comparable national data, which may result in some data overlaps and gaps in service information.

Updated data — sections revised 17 May 2022



More sections of Mental health services in Australia

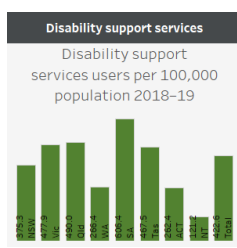




Same day hospital care

Same day hospital care

59,002 hospitalisations in public hospitals in 2019-20



Facilities

1,731 specialised mental health facilities provided care in 2019-20

Key Performance Indicators

Key Performance Indicators
for Australian public mental health services

Key Performance Indicators

1.9% of the Australian population accessed specialised clinical mental health care in 2019-20

