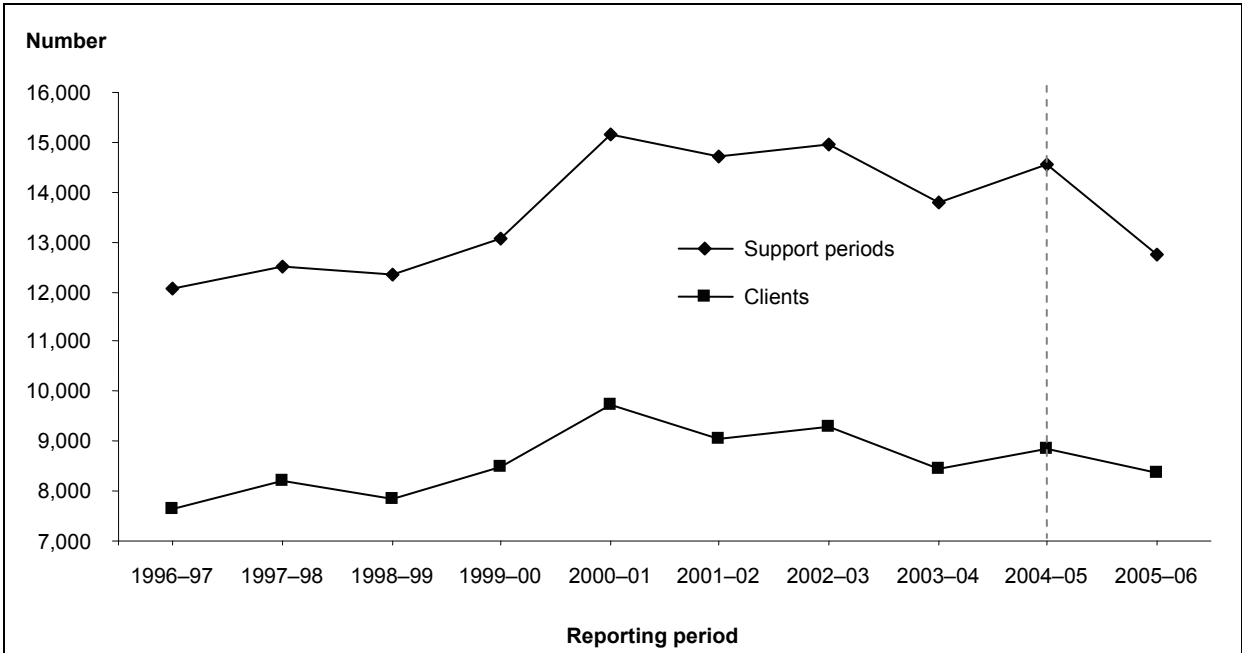


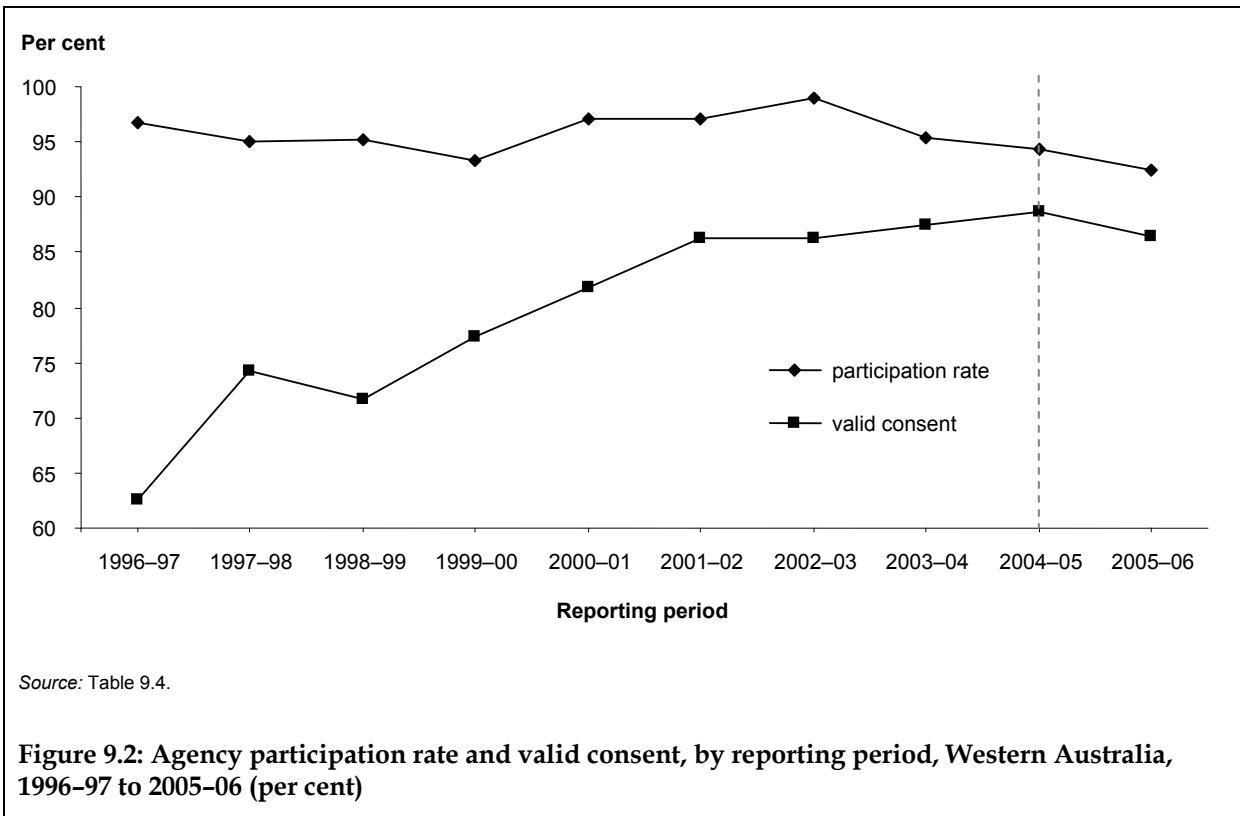
# 9 Support from 1996–97 to 2005–06

## 9.1 Key charts



Source: Table 9.2.

Figure 9.1: Number of SAAP support periods and clients, by reporting period, Western Australia, 1996-97 to 2005-06



## 9.2 Tables

**Table 9.1: SAAP funding to agencies and mean funding per support period and client: current and constant 2005–06 dollars, by reporting period, Western Australia, 1996–97 to 2005–06**

Reporting period	Total recurrent funding <sup>(a)</sup>	Funding to agencies <sup>(a)</sup>	Funding per support period <sup>(b)</sup>	Funding per client <sup>(b)</sup>
<b>Current \$</b>				
1996–97	17,696,000	17,043,000	1,420	2,220
1997–98	18,015,000	17,633,000	1,410	2,150
1998–99	22,037,000	21,395,000	1,730	2,720
1999–00	23,729,000	23,414,000	1,790	2,750
2000–01	25,673,000	24,757,000	1,630	2,540
2001–02	26,908,000	25,997,000	1,770	2,880
2002–03	28,518,000	27,503,000	1,840	2,960
2003–04	29,544,000	28,462,000	2,070	3,370
2004–05	29,995,000	29,004,000	1,990	3,270
2005–06	30,536,000	29,403,000	2,310	3,530
<b>Constant 2005–06 \$</b>				
1996–97	25,619,000	24,674,000	2,050	3,220
1997–98	25,384,000	24,846,000	1,990	3,030
1998–99	29,258,000	28,406,000	2,300	3,610
1999–00	30,144,000	29,744,000	2,280	3,490
2000–01	31,438,000	30,317,000	2,000	3,110
2001–02	31,348,000	30,287,000	2,060	3,350
2002–03	33,267,000	32,083,000	2,150	3,460
2003–04	32,481,000	31,292,000	2,270	3,710
2004–05	31,819,000	30,768,000	2,120	3,470
2005–06	30,536,000	29,403,000	2,310	3,530

(a) 'Total recurrent funding' and 'Funding to agencies' for 1999–00 and 2000–01 includes relatively small amounts provided through the Partnerships Against Domestic Violence Program (AIHW 2001a:Table 2.1; AIHW 2001b: Table 2.1). 'Total recurrent funding' and 'Funding to agencies' for 2002–03, 2003–04, 2004–05 and 2005–06 includes state-only recurrent allocations which are in addition to the SAAP agreement between this government and the Australian Government (see Table 2.1; AIHW 2003:Table 2.1; AIHW 2005:Table 2.1; AIHW 2006:Table 2.1).

(b) 'Funding per support period' and 'Funding per client' are based on recurrent allocations to agencies.

### Notes

1. In 2005–06 the definition of a support period, the definition of a client and the statistical linkage key were changed. Data using these are therefore not comparable to previous years.
2. Support period figures have been weighted to adjust for agency non-participation.
3. Client figures have been weighted to adjust for agency non-participation and client non-consent.

Sources: SAAP Administrative Data and Client Collections; AIHW 1997, 1999, 2000, 2001a, 2001b, 2002, 2003, 2005, 2006; FaCSIA unpublished data.

**Table 9.2: SAAP support periods and clients, by reporting period, Western Australia, 1996–97 to 2005–06 (number)**

	1996–97	1997–98	1998–99	1999–00	2000–01	2001–02	2002–03	2003–04	2004–05	2005–06
Support periods	12,050	12,500	12,350	13,050	15,150	14,700	14,950	13,800	14,550	12,750
<i>Errors &amp; omissions</i>	—	—	—	—	—	—	—	—	—	—
Clients	7,650	8,200	7,850	8,500	9,750	9,050	9,300	8,450	8,850	8,350
<i>Errors &amp; omissions</i>	—	—	—	—	—	—	—	—	—	—
Nightly average support periods with accommodation	300	600	650	650	650	650	700	650	650	650
<i>Errors &amp; omissions</i>	1,050	1,100	1,300	1,600	1,750	1,650	1,800	1,350	1,600	92
Daily average support periods	1,050	1,100	1,300	1,600	1,750	1,650	1,800	1,350	1,600	1,400
<i>Errors &amp; omissions</i>	865	415	63	25	119	128	15	3	—	—

*Notes*

1. In 2005–06 the definition of a support period, the definition of a client and the statistical linkage key were changed. Data using these are therefore not comparable to previous years.
2. Numbers of clients in this table relate to clients who ever received assistance from a SAAP agency in Western Australia.
3. Support period figures have been weighted to adjust for agency non-participation.
4. Client figures have been weighted to adjust for agency non-participation and client non-consent.

*Source:* SAAP Client Collection.

**Table 9.3: SAAP accompanying child support periods and accompanying children by reporting period, Western Australia, 2001–02 to 2005–06 (number)**

	2001–02	2002–03	2003–04	2004–05	2005–06
Accompanying child support periods	7,750	8,050	7,900	8,650	8,300
<i>Errors &amp; omissions</i>	—	—	—	—	—
Accompanying children	5,900	6,000	5,900	6,100	5,400
<i>Errors &amp; omissions</i>	—	—	—	—	—
Nightly average accompanying child support periods with accommodation	300	400	400	500	500
<i>Errors &amp; omissions</i>	99	58	139	127	70
Daily average accompanying child support periods	1,000	1,200	750	850	950
<i>Errors &amp; omissions</i>	61	6	—	—	—

*Notes*

1. In 2005–06 the definition of an accompanying child support period, the definition of an accompanying child and the statistical linkage key were changed. Data using these are therefore not comparable to previous years.
2. Dates of support and accommodation are not collected for accompanying children. For the purposes of calculating the number of days of support and the number of nights of accommodation, accompanying children are assumed to have the same periods of support and accommodation as their parent(s) or guardian(s).
3. Numbers of accompanying children in this table relate to children who ever accompanied a client to a SAAP agency in Western Australia.
4. Accompanying child support period figures have been weighted to adjust for agency non-participation.
5. Accompanying children figures have been weighted to adjust for agency non-participation and client non-consent.

Source: SAAP Client Collection.

**Table 9.4: SAAP Client Collection: agency participation rates and forms returned with informed consent and valid consent by reporting period, Western Australia, 1996–97 to 2005–06**

	1996–97	1997–98	1998–99	1999–00	2000–01	2001–02	2002–03	2003–04	2004–05	2005–06
Agencies <sup>(a)</sup> (number)	94	100	104	104	102	104	105	109	107	106
Agency participation rate (%)	96.8	95.0	95.2	93.3	97.1	97.1	99.0	95.4	94.4	92.5
Forms returned (number)	11,538	11,915	11,774	12,178	14,711	14,257	14,795	13,146	13,729	11,676
Forms returned with consent (%)	66.1	77.7	74.7	80.1	84.0	88.2	88.1	90.6	91.6	89.9
Forms returned with valid consent <sup>(b)</sup> (%)	62.5	74.3	71.6	77.3	81.8	86.3	86.3	87.4	88.7	86.5

(a) 'Agencies' refers to the number of agencies that were 'in scope'—that is, that should have been participating in the reference period.

(b) 'Valid consent' here refers to forms with a valid statistical linkage key (see 'statistical linkage key' in the Glossary and AIHW 2006:Glossary). Note that in 2005–06 the statistical linkage key was changed and therefore data using this is not comparable to previous years.

Note: Table based on forms returned from agencies in scope for the Client Collection during the reference period. Not all agencies funded under SAAP are required to participate in the Client Collection. For example, agencies that provide only support to other agencies or casual assistance lasting less than 1 hour on a given day and which is not of an ongoing nature are not required to participate in the collection. Consequently, some agencies funded under SAAP (see Chapter 2) are not included in this table.

Sources: SAAP Administrative Data and Client Collections.

