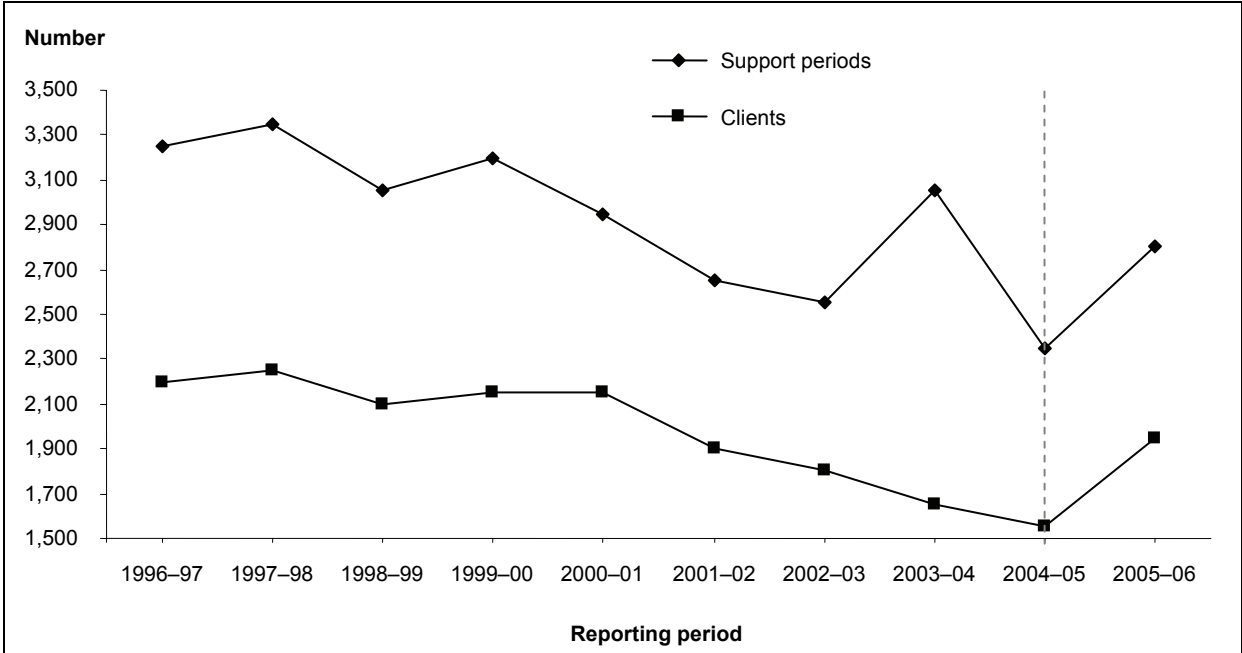


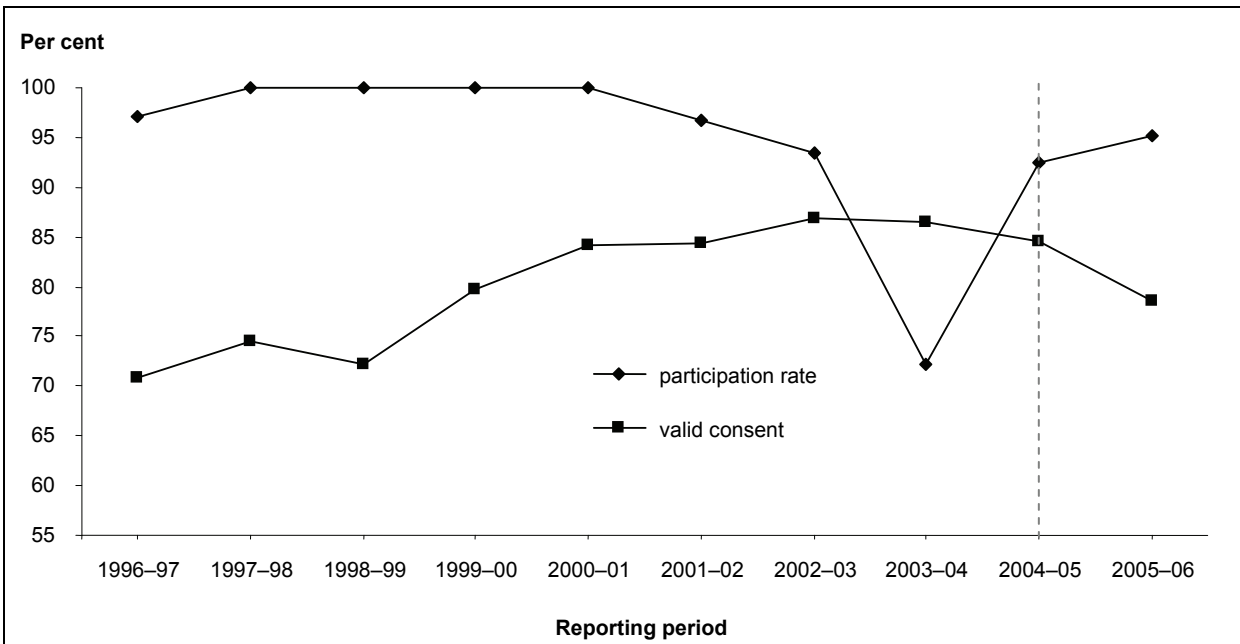
# 9 Support from 1996-97 to 2005-06

## 9.1 Key charts



Source: Table 9.2.

Figure 9.1: Number of SAAP support periods and clients, by reporting period, Australian Capital Territory, 1996-97 to 2005-06



Source: Table 9.4.

**Figure 9.2: Agency participation rate and valid consent, by reporting period, Australian Capital Territory, 1996-97 to 2005-06 (per cent)**

## 9.2 Tables

**Table 9.1: SAAP funding to agencies and mean funding per support period and client: current and constant 2005–06 dollars, by reporting period, Australian Capital Territory, 1996–97 to 2005–06**

Reporting period	Total recurrent funding <sup>(a)</sup>	Funding to agencies <sup>(a)</sup>	Funding per support period <sup>(b)</sup>	Funding per client <sup>(b)</sup>
<b>Current \$</b>				
1996–97	6,941,000	6,517,000	2,020	2,940
1997–98	7,066,000	6,705,000	2,000	2,960
1998–99	7,070,000	6,705,000	2,210	3,230
1999–00	7,326,000	6,948,000	2,180	3,210
2000–01	9,636,000	8,751,000	2,980	4,120
2001–02	9,916,000	7,942,000	2,980	4,130
2002–03	10,230,000	9,835,000	3,900	5,530
2003–04	12,825,000	12,600,000	4,140	7,570
2004–05	14,561,000	14,349,000	6,150	9,150
2005–06	14,928,000	14,556,000	5,160	7,450
<b>Constant 2005–06 \$</b>				
1996–97	9,075,000	8,521,000	2,640	3,850
1997–98	9,174,000	8,705,000	2,600	3,850
1998–99	9,376,000	8,893,000	2,930	4,280
1999–00	8,992,000	8,528,000	2,670	3,940
2000–01	11,500,000	10,444,000	3,560	4,910
2001–02	11,764,000	9,422,000	3,530	4,900
2002–03	10,968,000	10,544,000	4,180	5,930
2003–04	13,318,000	13,084,000	4,300	7,860
2004–05	14,683,000	14,470,000	6,210	9,230
2005–06	14,928,000	14,556,000	5,160	7,450

(a) 'Total recurrent funding' and 'Funding to agencies' for 2003–04, 2004–05 and 2005–06 includes state-only recurrent allocations which are in addition to the SAAP agreement between this government and the Australian Government (see Table 2.1; AIHW 2005:Table 2.1; AIHW 2006:Table 2.1).

(b) 'Funding per support period' and 'Funding per client' are based on recurrent allocations to agencies.

### Notes

1. In 2005–06 the definition of a support period, the definition of a client and the statistical linkage key were changed. Data using these are therefore not comparable to previous years.
2. Support period figures have been weighted to adjust for agency non-participation.
3. Client figures have been weighted to adjust for agency non-participation and client non-consent.

Sources: SAAP Administrative Data and Client Collections; AIHW 1997, 1999, 2000, 2001a, 2001b, 2002, 2003, 2005, 2006; ABS 2006b; FaCSIA unpublished data.

**Table 9.2: SAAP support periods and clients, by reporting period, Australian Capital Territory, 1996–97 to 2005–06 (number)**

	1996–97	1997–98	1998–99	1999–00	2000–01	2001–02	2002–03	2003–04	2004–05	2005–06
Support periods	3,250	3,350	3,050	3,200	2,950	2,650	2,550	3,050	2,350	2,800
<i>Errors &amp; omissions</i>	—	—	—	—	—	—	—	—	—	—
Clients	2,200	2,250	2,100	2,150	2,150	1,900	1,800	1,650	1,550	1,950
<i>Errors &amp; omissions</i>	—	—	—	—	—	—	—	—	—	—
Nightly average support periods with accommodation	150	350	300	250	300	200	200	250	200	200
<i>Errors &amp; omissions</i>	49	52	138	186	58	40	60	57	54	30
Daily average support periods	450	500	450	450	500	400	450	550	500	550
<i>Errors &amp; omissions</i>	54	63	15	2	13	13	3	1	—	—

*Notes*

1. In 2005–06 the definition of a support period, the definition of a client and the statistical linkage key were changed. Data using these are therefore not comparable to previous years.
2. Numbers of clients in this table relate to clients who ever received assistance from a SAAP agency in the Australian Capital Territory.
3. Support period figures have been weighted to adjust for agency non-participation.
4. Client figures have been weighted to adjust for agency non-participation and client non-consent.

*Source:* SAAP Client Collection.

**Table 9.3: SAAP accompanying child support periods and accompanying children by reporting period, Australian Capital Territory, 2001–02 to 2005–06 (number)**

	2001–02	2002–03	2003–04	2004–05	2005–06
Accompanying child support periods	950	1,000	1,150	950	1,550
<i>Errors &amp; omissions</i>	—	—	—	—	—
Accompanying children	800	850	750	800	1,000
<i>Errors &amp; omissions</i>	—	—	—	—	—
Nightly average accompanying child support periods with accommodation	100	100	150	150	200
<i>Errors &amp; omissions</i>	15	42	43	12	16
Daily average accompanying child support periods	250	250	350	300	450
<i>Errors &amp; omissions</i>	3	3	1	—	—

*Notes*

1. In 2005–06 the definition of an accompanying child support period, the definition of an accompanying child and the statistical linkage key were changed. Data using these are therefore not comparable to previous years.
2. Dates of support and accommodation are not collected for accompanying children. For the purposes of calculating the number of days of support and the number of nights of accommodation, accompanying children are assumed to have the same periods of support and accommodation as their parent(s) or guardian(s).
3. Numbers of accompanying children in this table relate to children who ever accompanied a client to a SAAP agency in the Australian Capital Territory.
4. Accompanying child support period figures have been weighted to adjust for agency non-participation.
5. Accompanying children figures have been weighted to adjust for agency non-participation and client non-consent.

Source: SAAP Client Collection.

**Table 9.4: SAAP Client Collection: agency participation rates and forms returned with informed consent and valid consent by reporting period, Australian Capital Territory, 1996–97 to 2005–06**

	1996–97	1997–98	1998–99	1999–00	2000–01	2001–02	2002–03	2003–04	2004–05	2005–06
Agencies <sup>(a)</sup> (number)	34	31	30	30	30	31	31	43	40	41
Agency participation rate (%)	97.1	100.0	100.0	100.0	100.0	96.8	93.5	72.1	92.5	95.1
Forms returned (number)	3,050	3,178	3,028	3,188	2,934	2,583	2,361	2,194	2,103	2,685
Forms returned with consent (%)	72.4	76.7	73.6	80.9	85.3	86.4	87.3	87.4	86.1	82.1
Forms returned with valid consent <sup>(b)</sup> (%)	70.9	74.5	72.2	79.7	84.2	84.3	86.8	86.5	84.5	78.6

(a) 'Agencies' refers to the number of agencies that were 'in scope'—that is, that should have been participating in the reference period.

(b) 'Valid consent' here refers to forms with a valid statistical linkage key (see 'statistical linkage key' in the Glossary and AIHW 2006:Glossary). Note that in 2005–06 the statistical linkage key was changed and therefore data using this is not comparable to previous years.

Note: Table based on forms returned from agencies in scope for the Client Collection during the reference period. Not all agencies funded under SAAP are required to participate in the Client Collection. For example, agencies that provide only support to other agencies or casual assistance lasting less than 1 hour on a given day and which is not of an ongoing nature are not required to participate in the collection. Consequently, some agencies funded under SAAP (see Chapter 2) are not included in this table.

Sources: SAAP Administrative Data and Client Collections.

