

Health expenditure data cubes

About the data

1. The term ‘current prices’ refers to expenditure reported for a particular year, unadjusted for inflation. Constant price expenditure on the other hand, adjusts for the effects of inflation. All constant price estimates indicate what expenditure would have been had the latest available year’s prices applied in all years.

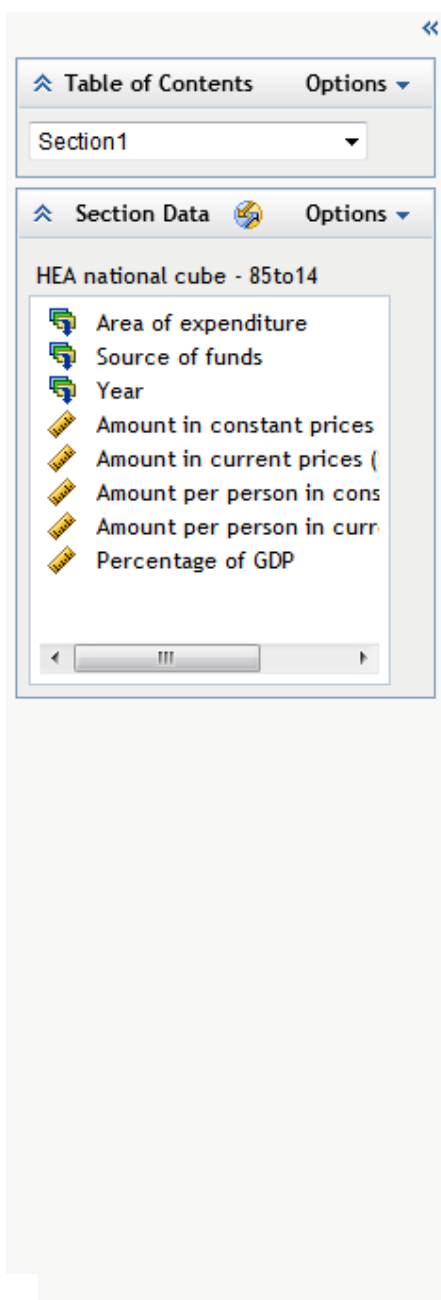
2. Changes to the calculation of GDP have meant that deflators and therefore time-series for National health expenditure are only available back to 1985–86. Previously, data has been available back to 1960–61. There is a break in time series between 2002–03 and 2003–04. Up to 2002–03, patient transport, dental, community health and public health services that were delivered in public hospitals were included as expenditure on public hospitals. From 2003–04, they are included under their own classifications and are not included in expenditure on public hospital services. Therefore, care must be taken when comparing 2002–03 and earlier years with 2003–04 and later years.

3. National estimates should not be derived using the state and territory health expenditure data cube, as the sum of the individual state and territory estimates may not be equal to the national estimate due to rounding issues. The national health expenditure data cube should always be used to derive national estimates of health expenditure.

How to use the data cubes

1. Select National health expenditure data cubes.

This screen will appear:



National health expenditure data cubes, 1985–86 to 2013–14

Applied filters: None

Year	Amount in current prices (\$ million)	Amount in constant prices (\$ million)	Amount per person in current prices (\$)	Amount per person in constant prices (\$)	Percentage of GDP
1985–86	17,041	41,715	1,072	2,624	6.55
1986–87	19,346	43,696	1,199	2,707	6.77
1987–88	21,390	45,579	1,305	2,780	6.60
1988–89	24,000	48,527	1,438	2,908	6.53
1989–90	26,570	50,281	1,569	2,969	6.58
1990–91	28,738	51,286	1,674	2,987	6.93
1991–92	30,505	52,455	1,755	3,018	7.21
1992–93	32,450	55,440	1,848	3,158	7.31
1993–94	34,322	57,578	1,937	3,250	7.35
1994–95	36,473	59,793	2,039	3,342	7.36
1995–96	39,047	62,726	2,155	3,462	7.38
1996–97	42,116	66,370	2,298	3,621	7.57
1997–98	44,802	69,440	2,421	3,752	7.61
1998–99	48,428	73,204	2,589	3,914	7.81
1999–00	52,570	76,859	2,779	4,063	7.96
2000–01	58,318	82,605	3,047	4,316	8.27
2001–02	63,099	86,907	3,255	4,483	8.37
2002–03	68,798	91,956	3,510	4,691	8.59
2003–04	73,509	94,932	3,708	4,789	8.53
2004–05	81,061	101,014	4,044	5,040	8.79
2005–06	86,685	103,614	4,268	5,102	8.69
2006–07	94,938	109,795	4,603	5,323	8.73
2007–08	103,563	117,048	4,928	5,570	8.79
2008–09	114,401	125,705	5,328	5,854	9.09
2009–10	121,710	130,582	5,567	5,973	9.39
2010–11	131,612	139,826	5,937	6,307	9.35
2011–12	141,957	148,304	6,304	6,586	9.54
2012–13	146,953	149,986	6,412	6,545	9.66
2013–14	154,622	154,622	6,638	6,638	9.77

Source: AIHW health expenditure database

2. Data cubes can be broken down by area of expenditure and/or source of funds.

There are two ways to do this:

Method (1): Drag the icons named 'Area of expenditure'/'Source of funds' from the Table of Contents into the table. Hover over table until arrow appears then drop into table.

NB: Arrow pointing right creates columns; arrow pointing down creates rows.

National health expenditure data cubes, 1985–86 to 2013–14

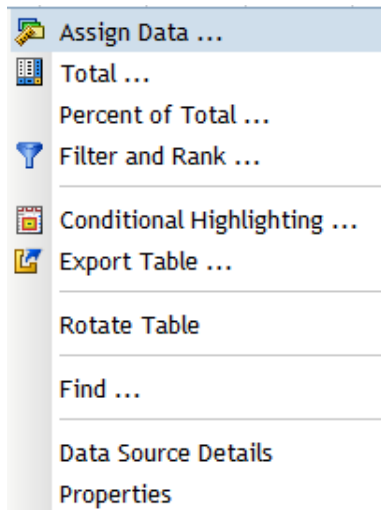
Applied filters: None

Year	Amount in current prices (\$ million)	Amount in constant prices (\$ million)	Amount per person in current prices (\$)	Amount per person in constant prices (\$)	Percentage of GDP
1985–86	17,041	41,715	1,072	2,624	6.55
1986–87	19,346	43,696	1,199	2,707	6.77
1987–88	21,390	45,579	1,305	2,780	6.60
1988–89	24,000	48,527	1,438	2,908	6.53
1989–90	26,570	50,281	1,569	2,969	6.58
1990–91	28,738	51,286	1,674	2,987	6.93
1991–92	30,505	52,455	1,755	3,018	7.21
1992–93	32,450	55,440	1,848	3,158	7.31
1993–94	34,322	57,578	1,937	3,250	7.35
1994–95	36,473	59,793	2,039	3,342	7.36
1995–96	39,047	62,726	2,155	3,462	7.38
1996–97	42,116	66,370	2,298	3,621	7.57
1997–98	44,802	69,440	2,421	3,752	7.61
1998–99	48,428	73,204	2,589	3,914	7.81
1999–00	52,570	76,859	2,779	4,063	7.96
2000–01	58,318	82,605	3,047	4,316	8.27
2001–02	63,099	86,907	3,255	4,483	8.37
2002–03	68,798	91,956	3,510	4,691	8.59
2003–04	73,509	94,932	3,708	4,789	8.53
2004–05	81,061	101,014	4,044	5,040	8.79
2005–06	86,685	103,614	4,268	5,102	8.69
2006–07	94,938	109,795	4,603	5,323	8.73
2007–08	103,563	117,048	4,928	5,570	8.79
2008–09	114,401	125,705	5,328	5,854	9.09
2009–10	121,710	130,582	5,567	5,973	9.39
2010–11	131,612	139,826	5,937	6,307	9.35
2011–12	141,957	148,304	6,304	6,586	9.54
2012–13	146,953	149,986	6,412	6,545	9.66
2013–14	154,622	154,622	6,638	6,638	9.77

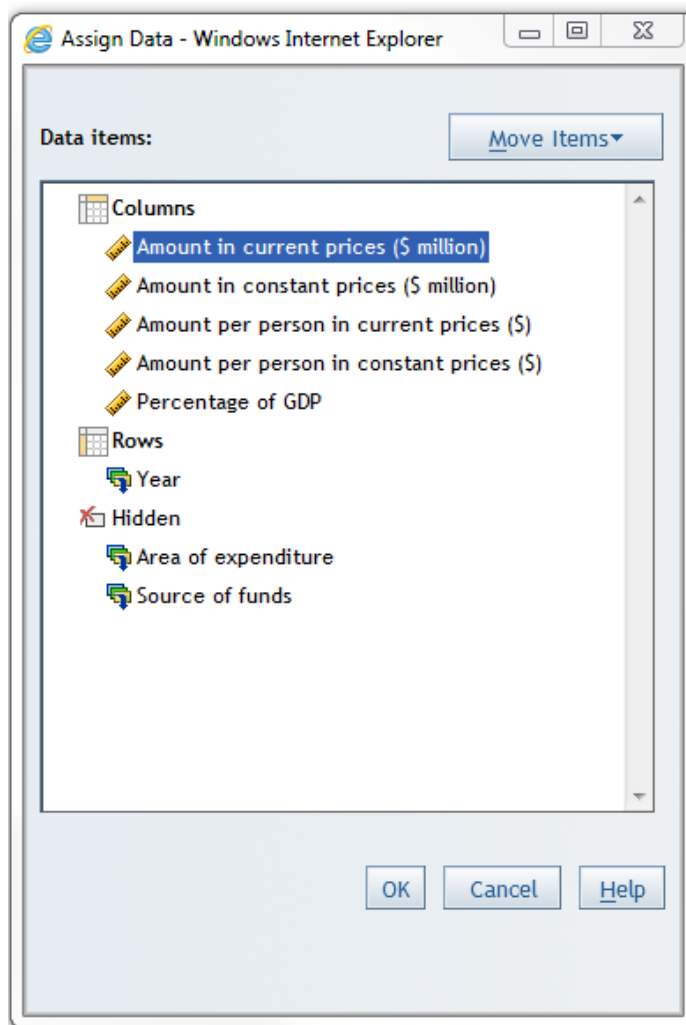
Source: AIHW health expenditure database

Method (2): Right-click on any cell within the table.

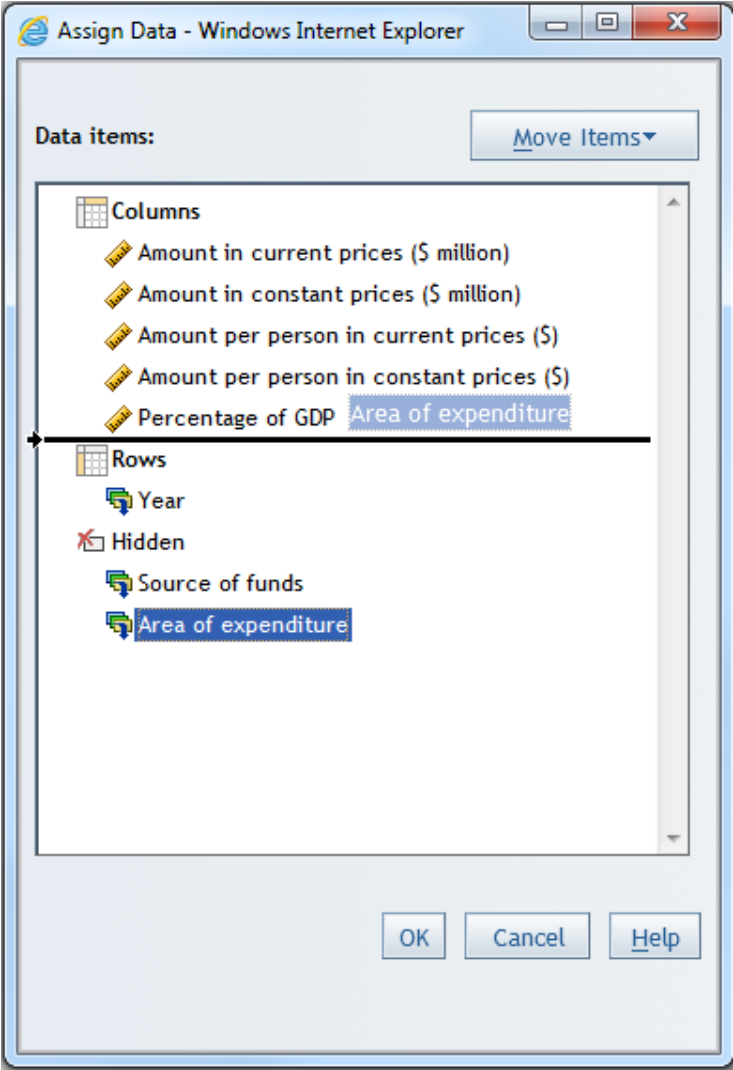
This menu will appear on the screen:



Select the Assign Data ... sub-menu. This menu will appear on the screen:

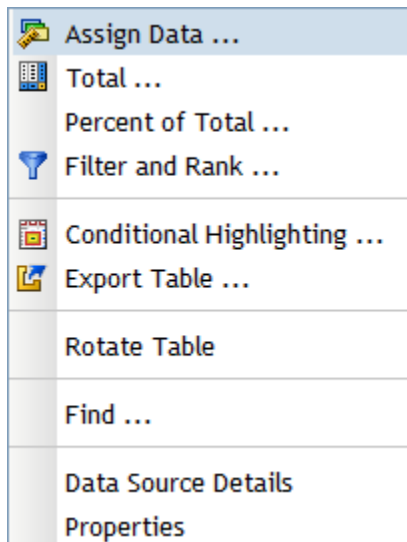


To build table with the 'Area of expenditure'/'Source of funds' breakdown, drag and drop these icons from the 'Hidden' sub-heading to either the 'Columns' or 'Rows' sub-headings (depending on your preference for the design of the table). Then click 'OK'.

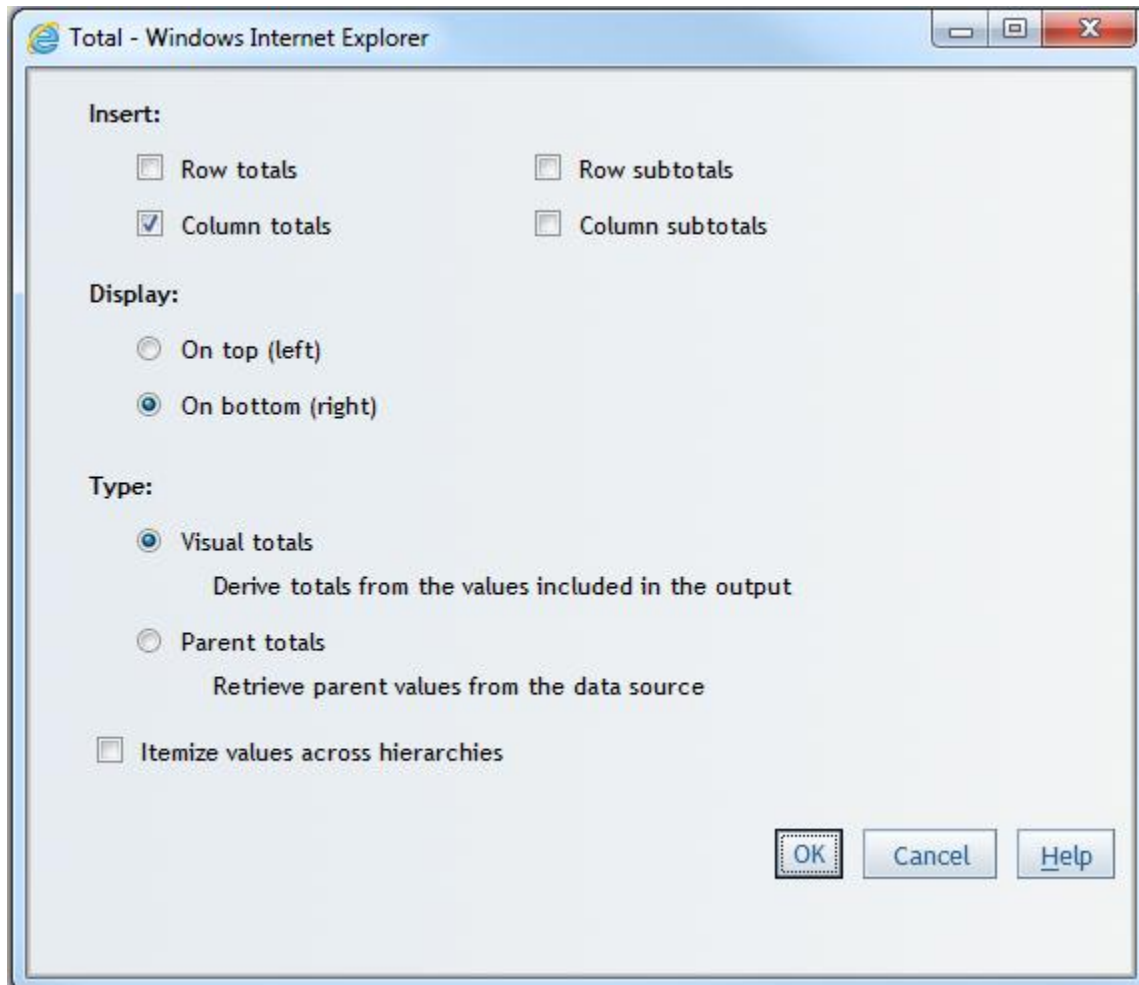


3. Options to customise and exporting the table

Right-click on any cell within the table. This menu will appear on the screen:

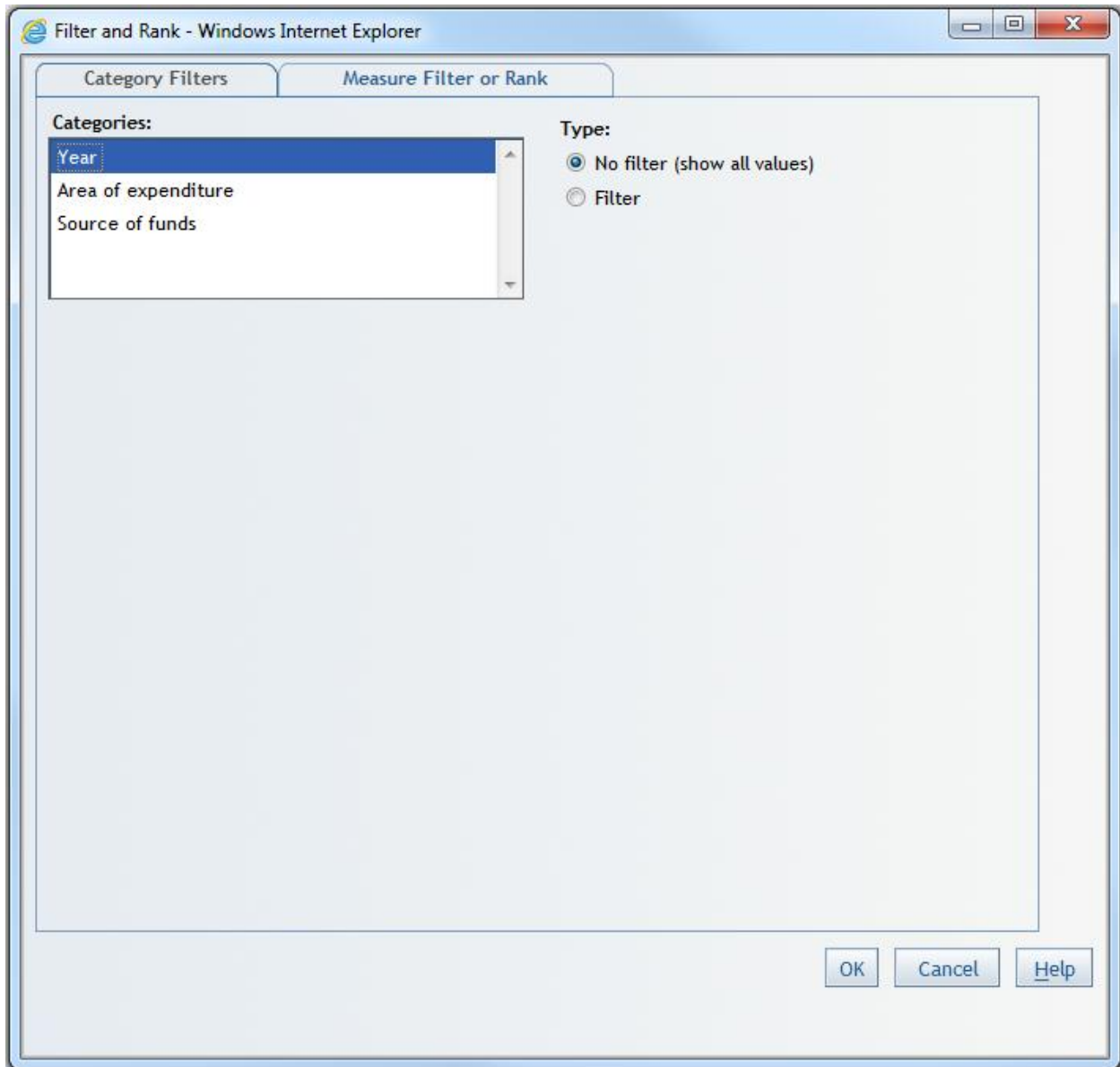


Selecting 'Total...' sub-menu:

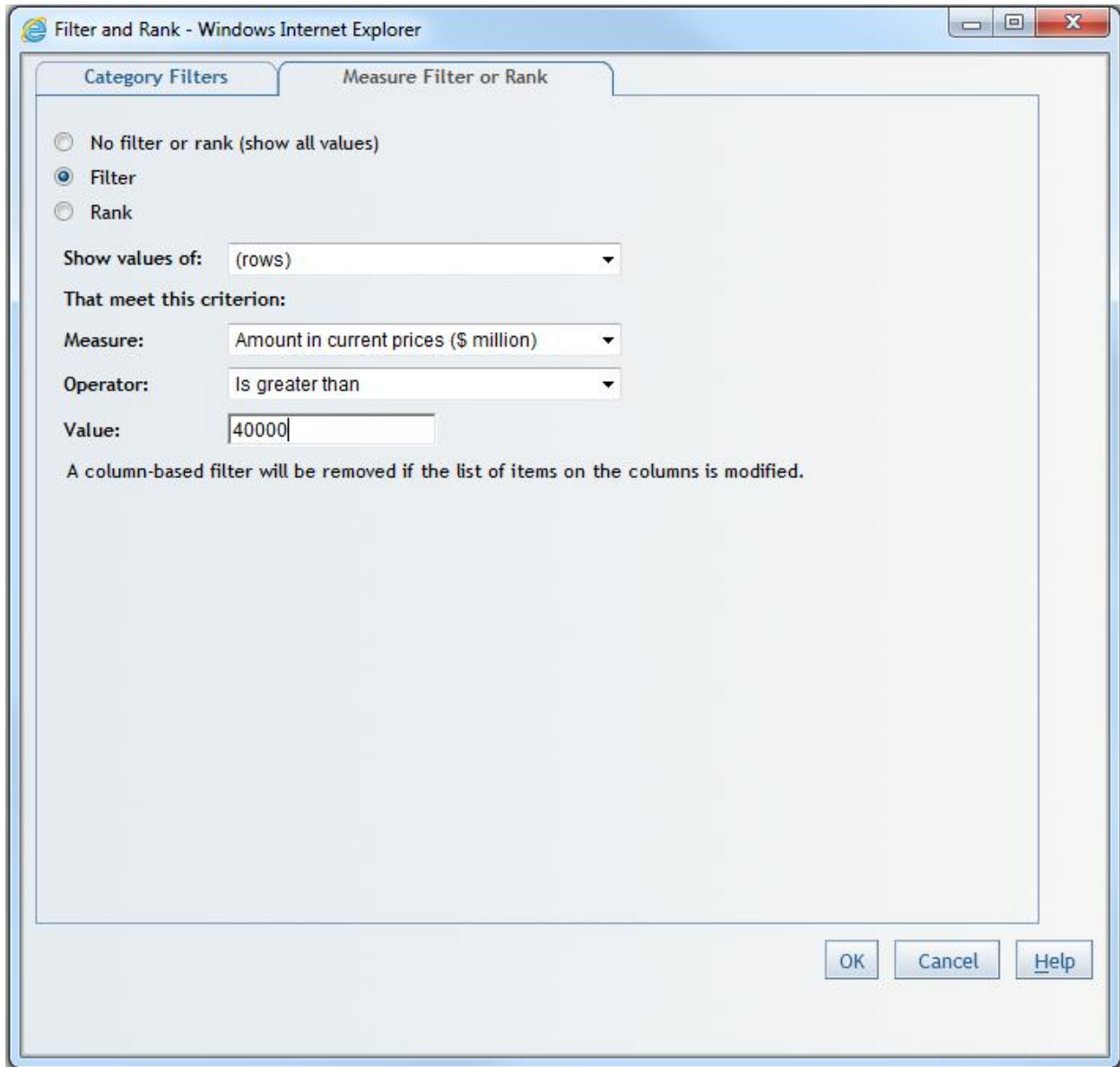


Selecting 'Filter and Rank...' sub-menu:

- Can filter the data by categories

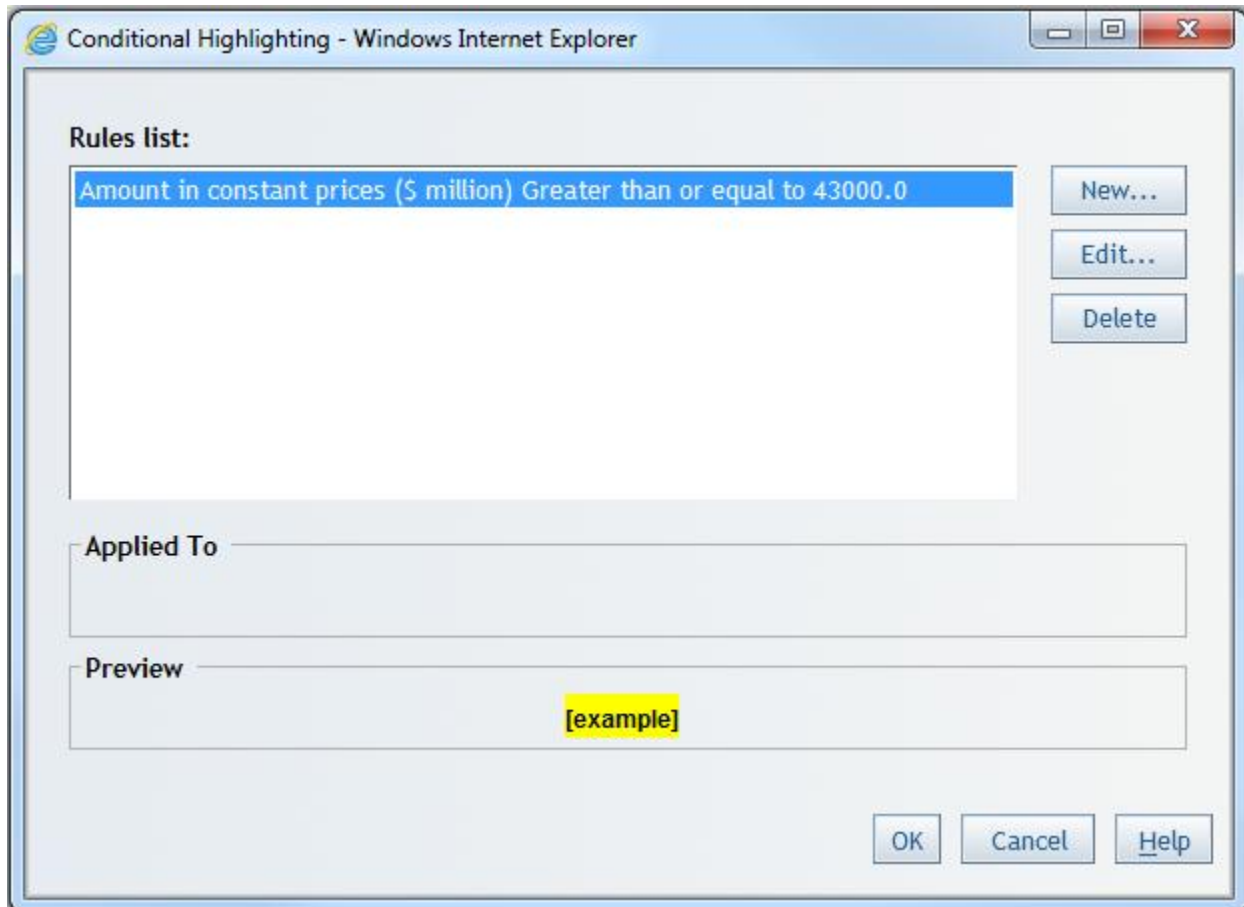


- Can filter the data by values and ranking

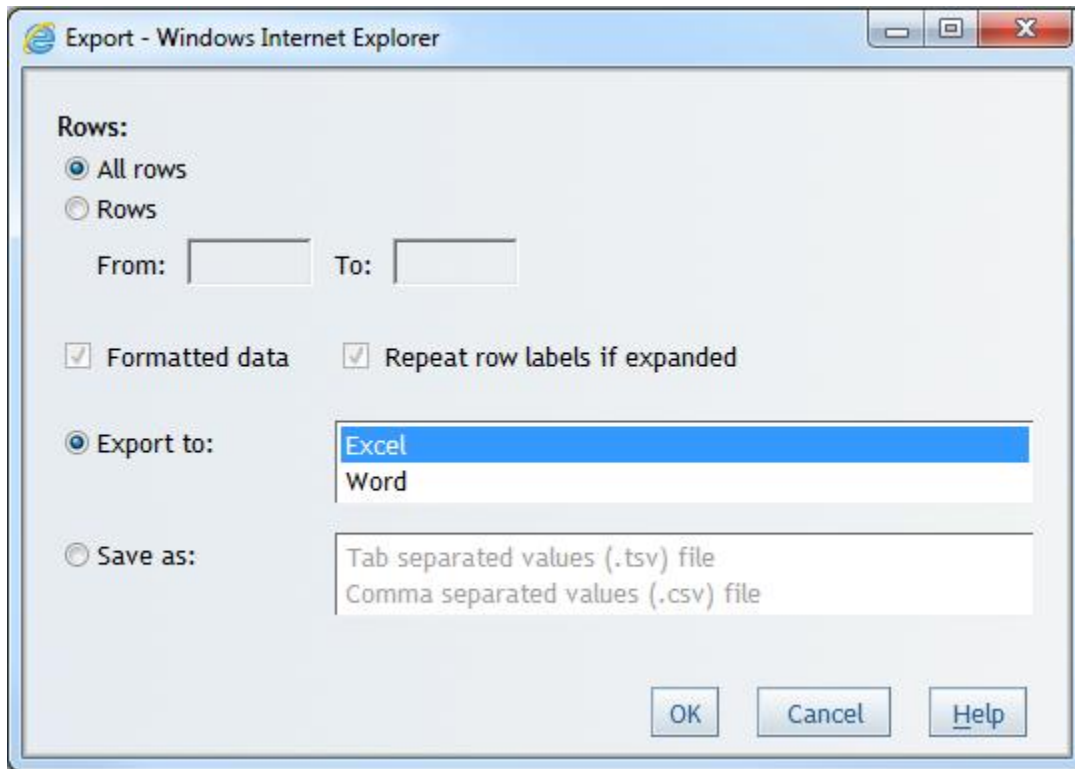


Selecting 'Conditional Highlighting...' sub-menu:

- Highlights values in tables based on a particular condition

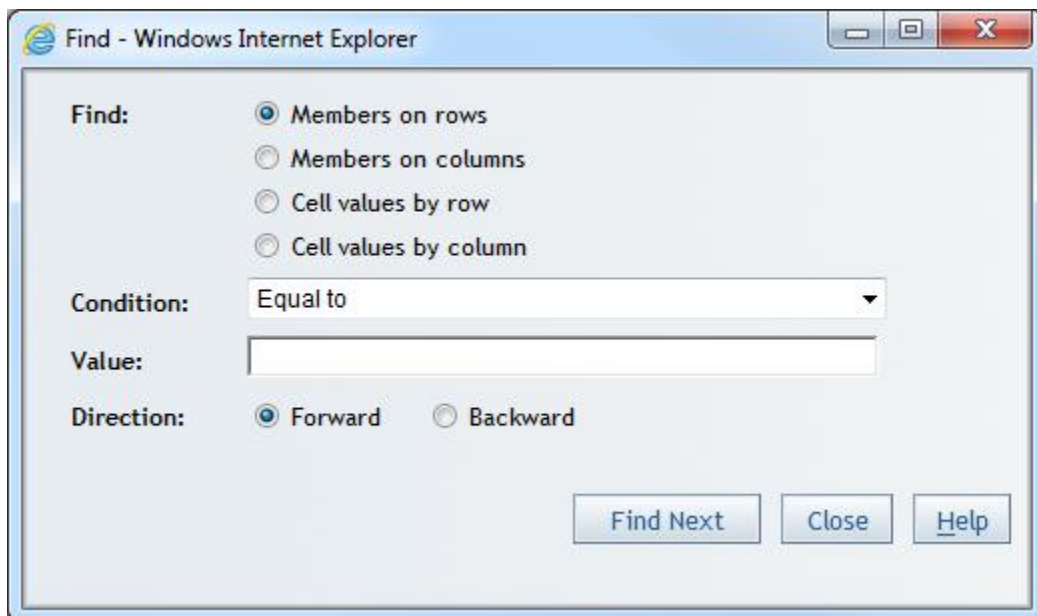


Selecting 'Export table...' sub-menu:

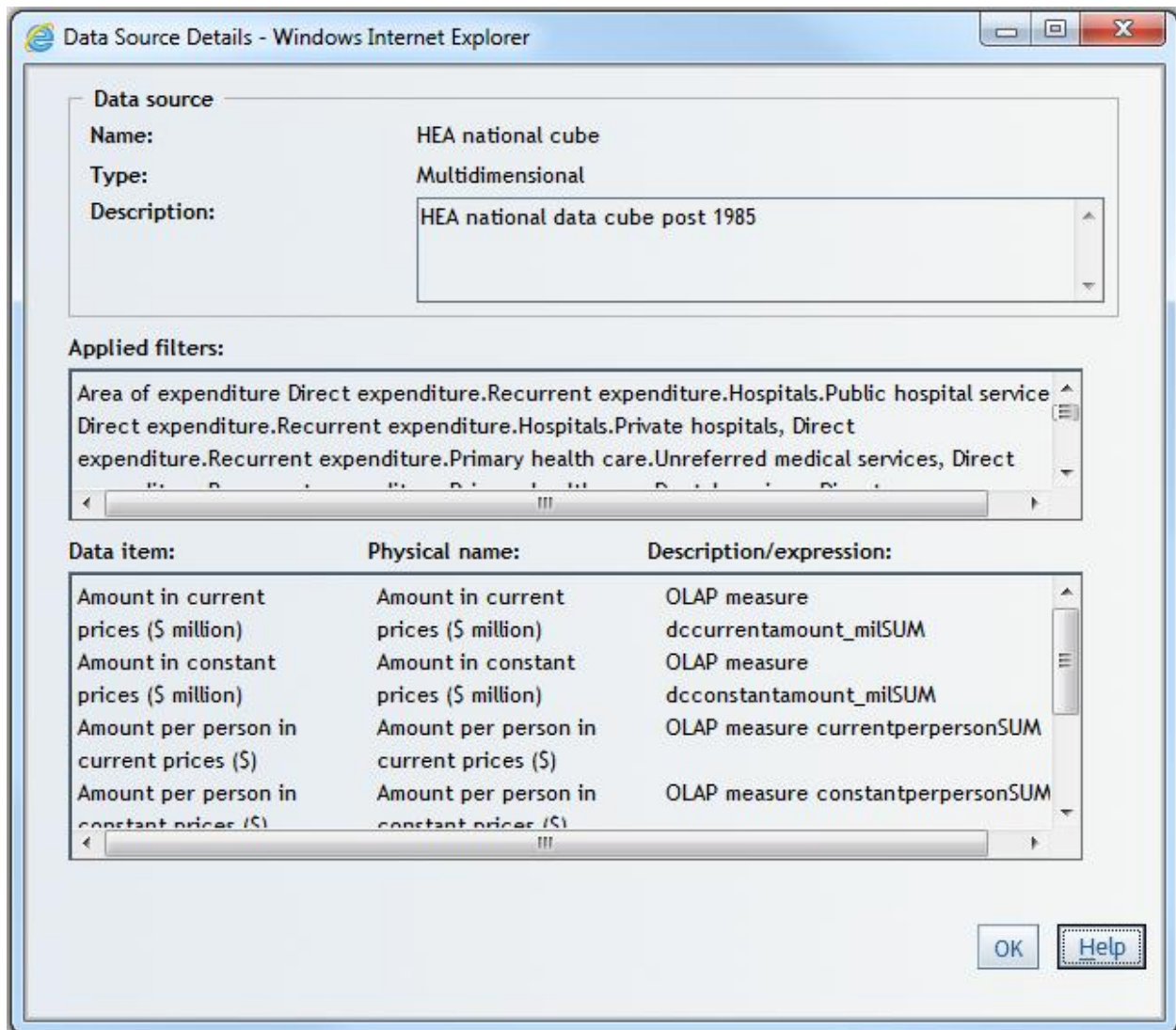


Selecting the 'Find...' sub-menu:

- Finds particular values in the tables subject to given conditions

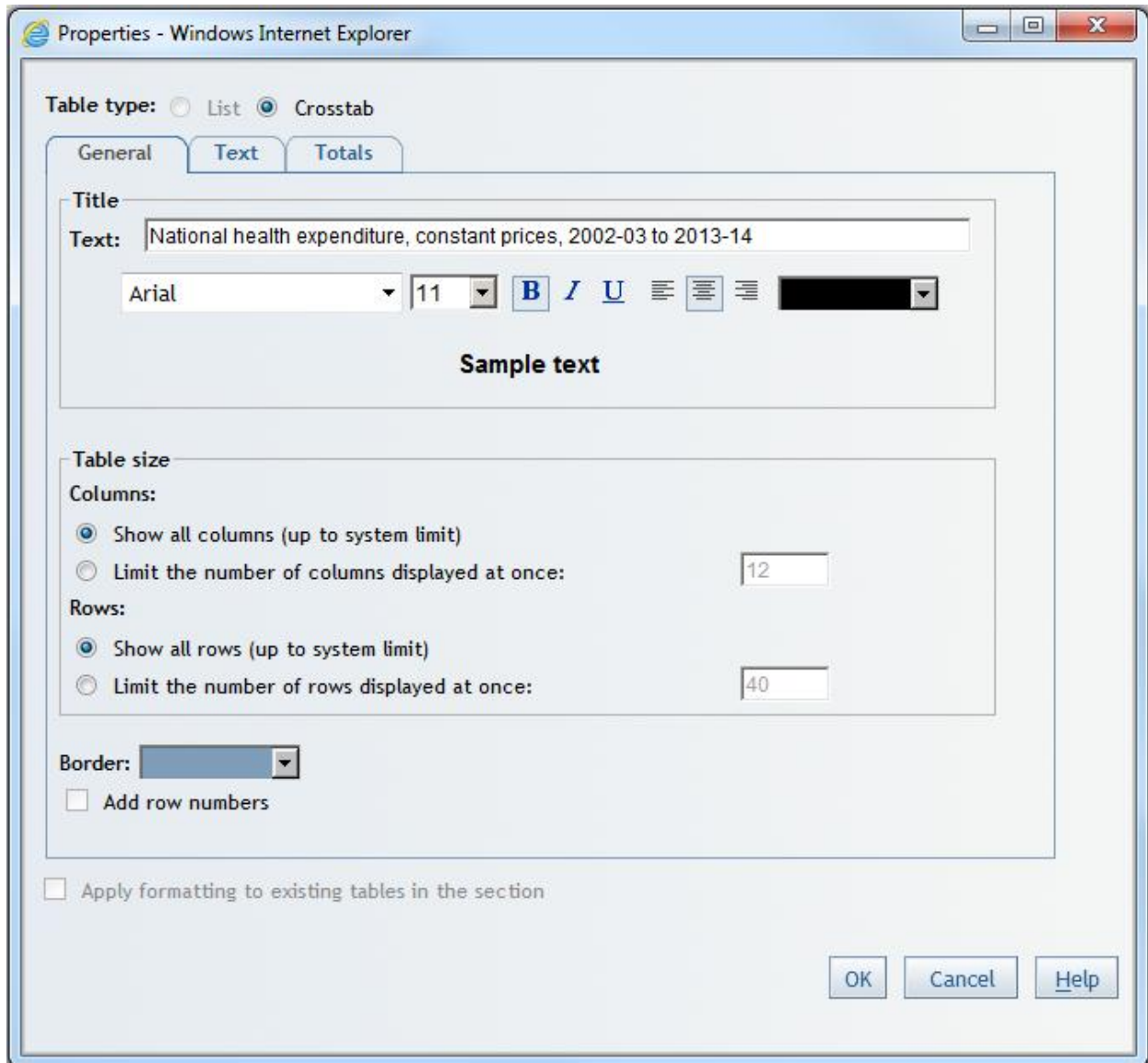


Selecting the 'Data Source Details' sub-menu:

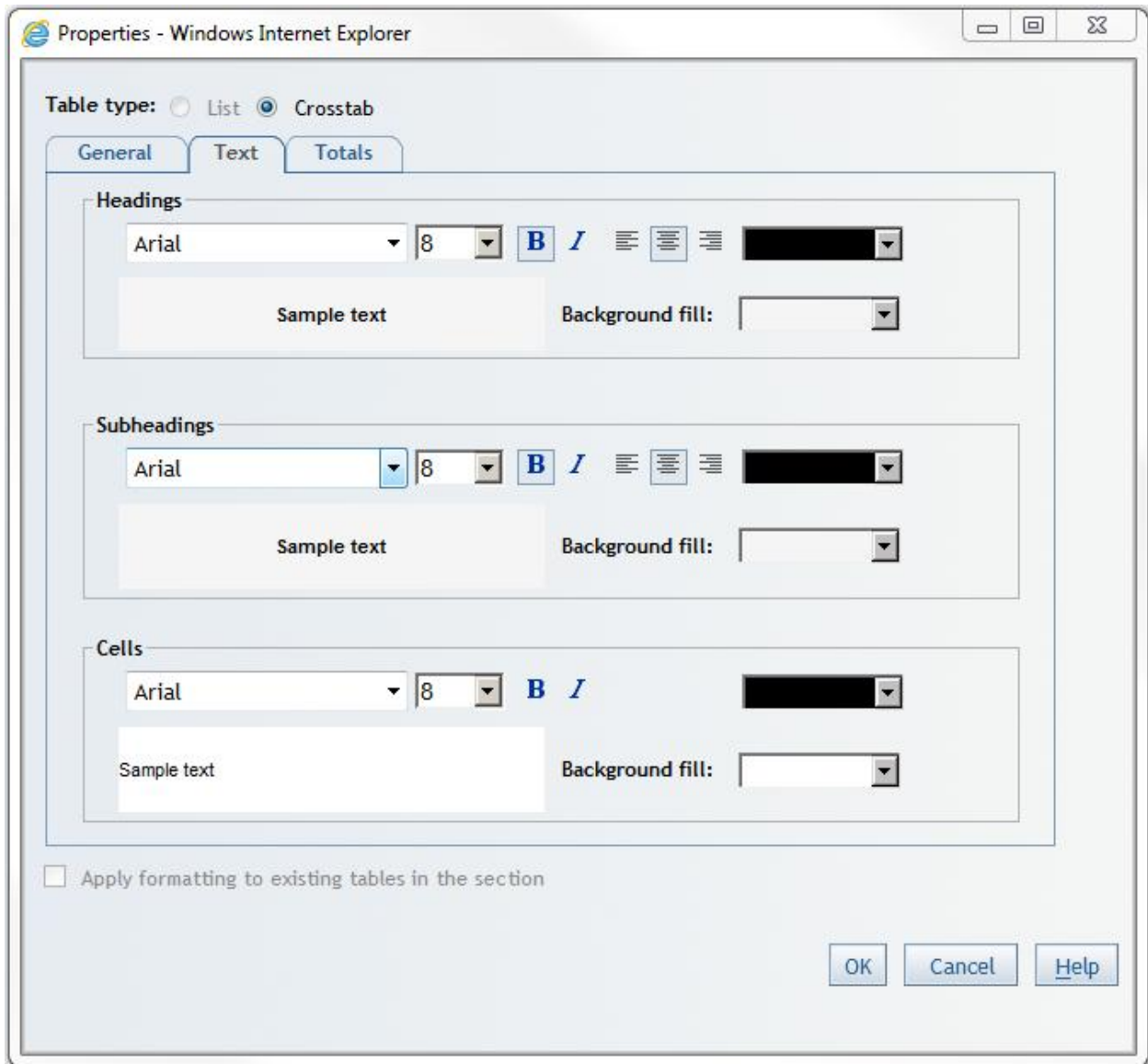


Selecting the 'Properties' sub-menu:

- Properties for titles given to the table.



- Properties for the text within the table e.g. column headings, subheadings and cells



- Properties for the text in the 'Totals' columns (if 'Totals' column were added)

